

STEAMBOAT SPRINGS



Dry cleaner opens shop

Owners of new store aim to compete with other 'green' operation in Steamboat

Page 11

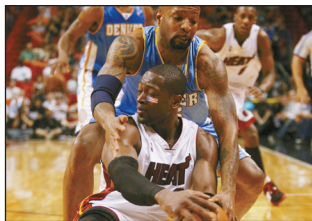
STEAMBOAT SPRINGS

Traffic fines may change

County commissioners move toward increasing local ticket penalties

Page 3

SPORTS



Nuggets top heat

Page 29

Steamboat Cup relay race



MATT STENSLAND/STAFF

Steamboat Springs Winter Sports Club mothers, from right, Susie Leeson, Jill Ruppel and Sarah Floyd, and 10-year-old Nordic skier Anna Burkholder, ski around a course Tuesday at the base of Howelsen Hill. The club was hosting a parent-child Steamboat Cup relay race. "This is a race where we laugh at the parents," Nordic coach Deb Rose said.

Housing plan to change

City Council will draft major affordable policy revisions

Brandon Gee PILOT & TODAY STAFF

STEAMBOAT SPRINGS

Sweeping changes appear to be in store for the city of Steamboat Springs' affordable housing ordinance.

In a 4-3 vote, the Steamboat Springs City Council decided to move forward with an ordi-

nance that would suspend linkage, an impact fee that requires developers to mitigate — with units or a fee — a percentage of the work force housing their developments are thought to create.

Also Tuesday, and in another 4-3 vote, council endorsed a plan suggested by a group of developers and local busi-

ness leaders that would replace the city's 21-page Community Housing Ordinance with three options for compliance: an affordable housing impact fee set at a percentage of the sales or market value of new developments, a real estate transfer tax and a third, catch-all option that would allow developers to make an alternative

suggestion to be approved or denied by City Council.

The plan would eliminate inclusionary zoning, which along with linkage is one of two key components of the city's affordable housing ordinance. Inclusionary zoning, enacted in 2006, requires

See Council, back page

INDEX

Business...28 Horoscope...34
Classifieds...36 La Vecindad...12
Colorado...25 Nation...27
Comics...34 Sports...29
Crossword...35 ViewPoints...8
Happenings...7 Weather...24

SKI TOWN USA SNOW REPORT

Steamboat Ski Area

Table with 4 columns: Snow type, Location, Snowfall, and Status. Includes rows for New snow (Mid-mountain, Summit), Base (Mid-mountain, Summit), Total snow, Trails open, Lifts open, and Conditions.

\*24-hour snowfall as of 12:30 p.m. previous day; † total snow beginning Oct. 21 as measured at mid-mountain FOR UP-TO-DATE ROAD CONDITIONS, INCLUDING RABBIT EARS PASS, call 511 or visit: www.cotrip.org

