


# Craig/Moffat County Economic Forecast 2010 & Discussion

**Business Research Division**  
Colorado's conduit for business and economic research

*Since 1915*

Colorado Business Economic Outlook, industry studies, and more!  
<http://leeds.colorado.edu/brd>

Leeds School of Business  
University of Colorado at Boulder  
428 UCB  
Boulder, CO 80509-0428  
303.440.8227




**Dr. Richard Wobbekind**  
Executive Director, Business Research Division and  
Associate Dean for MBA and Executive Programs

<http://leeds.colorado.edu/brd>

Business Research Division • Leeds School of Business • University of Colorado

---

---

---

---

---

---

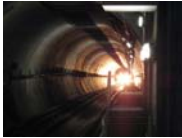
---

---

---

---

# Views on the Current State of the Economy



Business Research Division • Leeds School of Business • University of Colorado

---

---

---

---

---

---

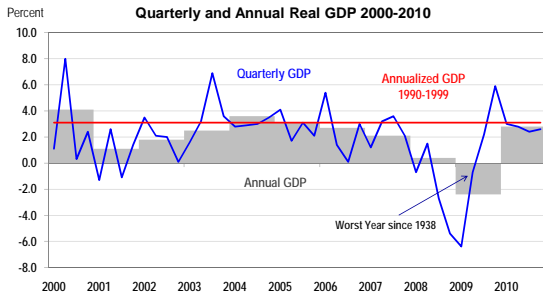
---

---

---

---

# Real GDP Growth



Business Research Division • Leeds School of Business • University of Colorado

---

---

---

---

---

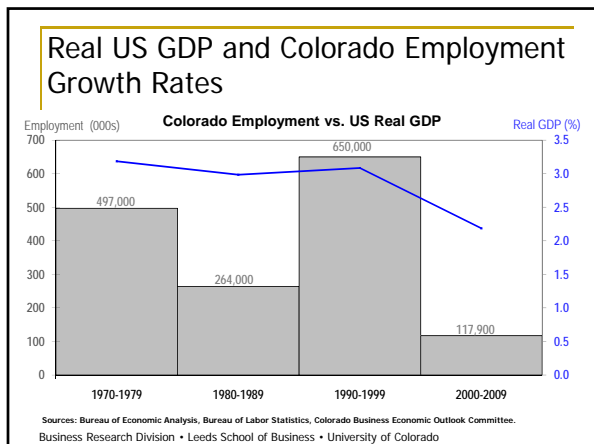
---

---

---

---

---




---

---

---

---

---

---

---

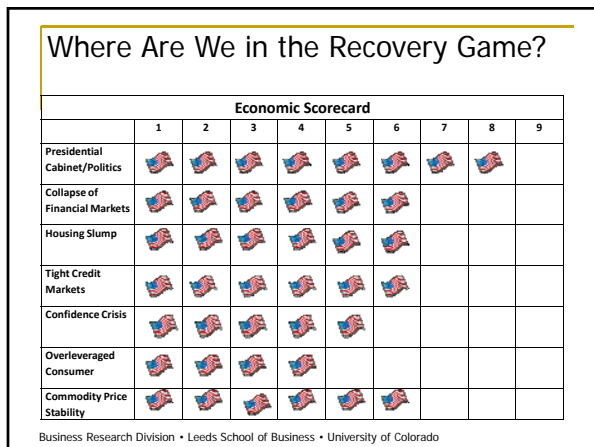
---

---

---

---

---




---

---

---

---

---

---

---

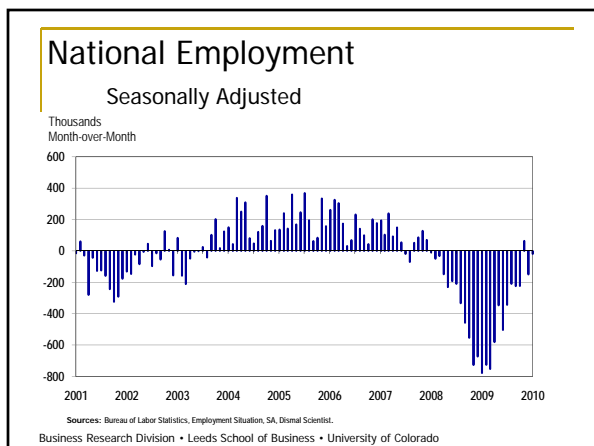
---

---

---

---

---




---

---

---

---

---

---

---

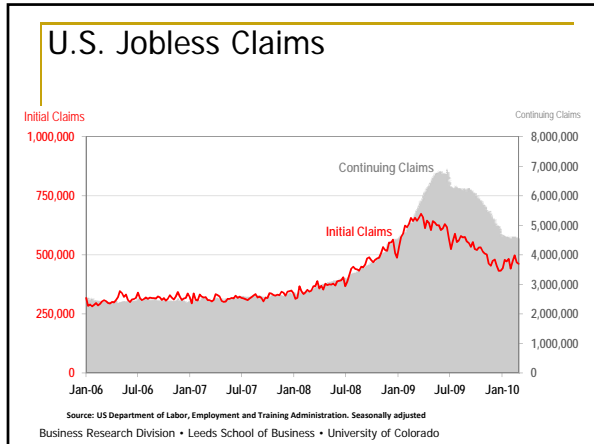
---

---

---

---

---




---

---

---

---

---

---

---

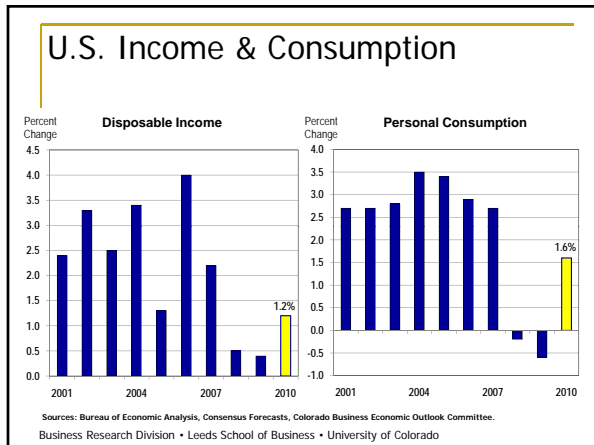
---

---

---

---

---




---

---

---

---

---

---

---

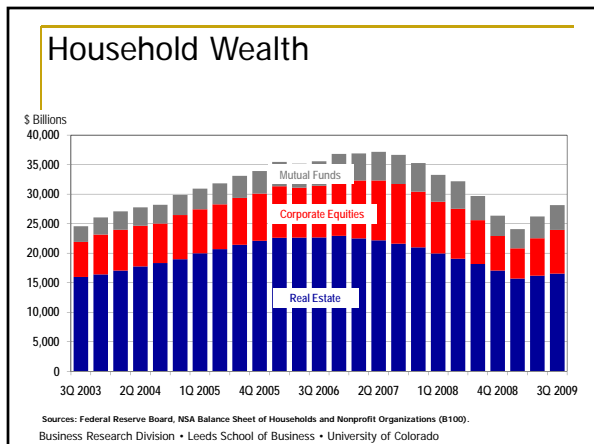
---

---

---

---

---




---

---

---

---

---

---

---

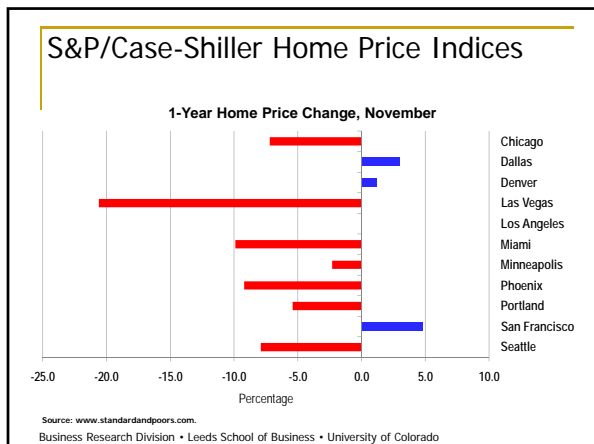
---

---

---

---

---




---

---

---

---

---

---

---

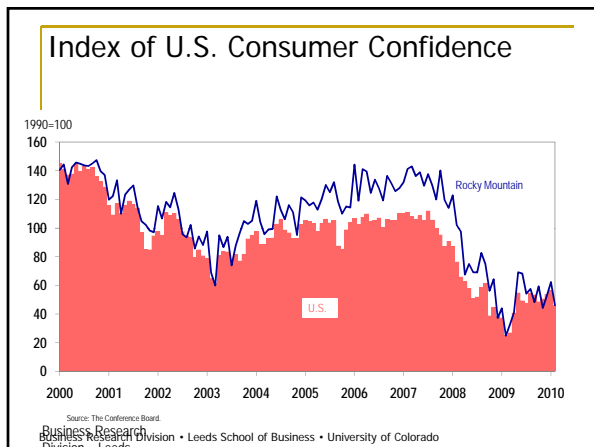
---

---

---

---

---




---

---

---

---

---

---

---

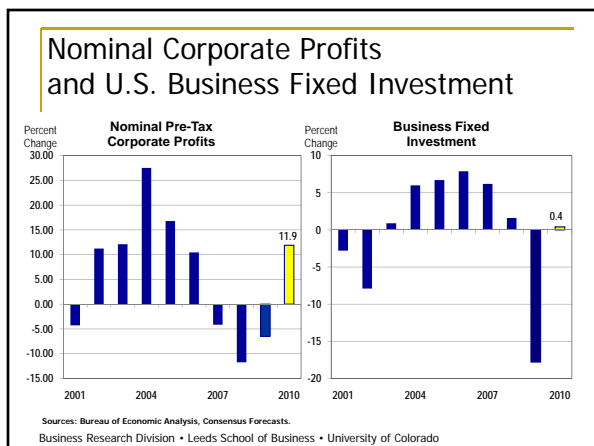
---

---

---

---

---




---

---

---

---

---

---

---

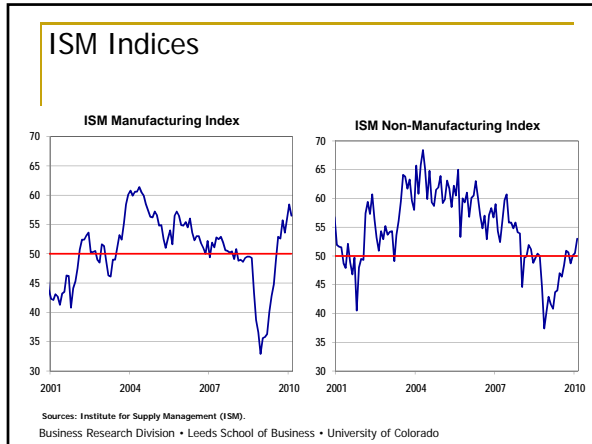
---

---

---

---

---



---

---

---

---

---

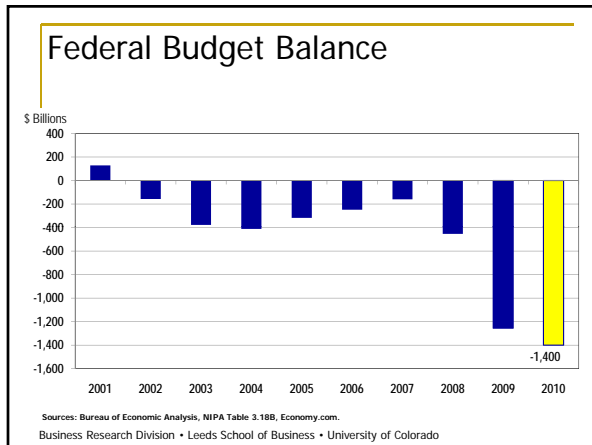
---

---

---

---

---



---

---

---

---

---

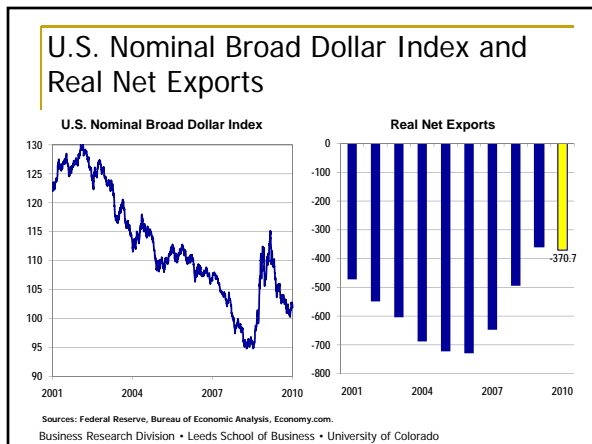
---

---

---

---

---



---

---

---

---

---

---

---

---

---

---

## Money, Interest Rates & Prices



Business Research Division • Leeds School of Business • University of Colorado

---

---

---

---

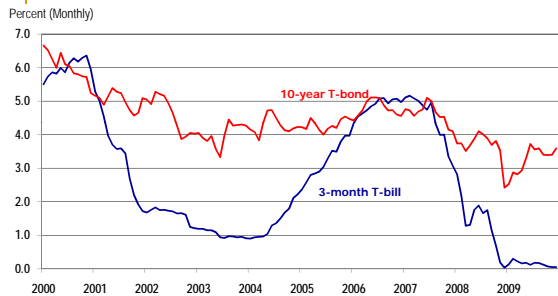
---

---

---

---

## Interest Rates



Business Research Division • Leeds School of Business • University of Colorado

---

---

---

---

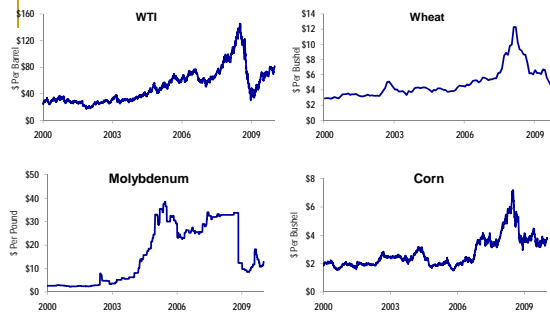
---

---

---

---

## Commodities



Business Research Division • Leeds School of Business • University of Colorado

---

---

---

---

---

---

---

---

## US Outlook



Things to watch in 2010.....

- Employment
- Lending
- Small Business
- Home Price Stability
- State and Local Governments
- Federal Debt

Business Research Division • Leeds School of Business • University of Colorado

---

---

---

---

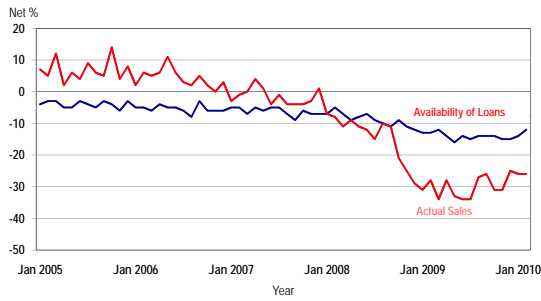
---

---

---

---

## Availability of Loans vs Actual Sales - NFIB



Source: National Federation of Independent Businesses.

Business Research Division • Leeds School of Business • University of Colorado

---

---

---

---

---

---

---

---

## Encouraging Signs



- Leading Economic Indicators
- ISM Surveys
- Retail Sales
- Jobless Claims
- 4<sup>th</sup> quarter GDP
- Housing Affordability

Business Research Division • Leeds School of Business • University of Colorado

---

---

---

---

---

---

---

---

### Colorado Population, Employment, Wages and Prices



Business Research Division • Leeds School of Business • University of Colorado

---

---

---

---

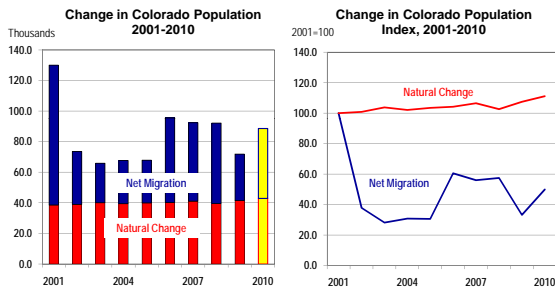
---

---

---

---

### Change in Population



Sources: State Demography Office and Colorado Business Economic Outlook Committee.  
Business Research Division • Leeds School of Business • University of Colorado

---

---

---

---

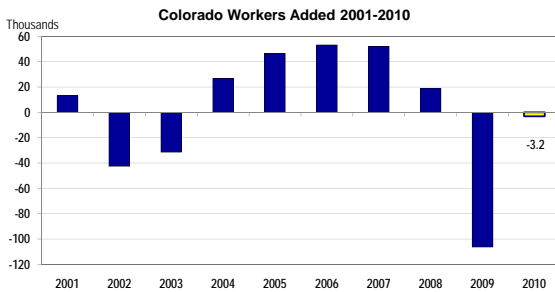
---

---

---

---

### Colorado Employment



Sources: Colorado Department of Labor and Employment, Colorado Business Economic Outlook Committee.  
Business Research Division • Leeds School of Business • University of Colorado

---

---

---

---

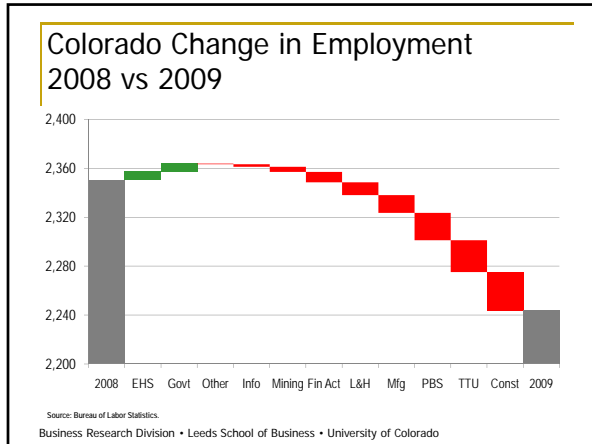
---

---

---

---





---

---

---

---

---

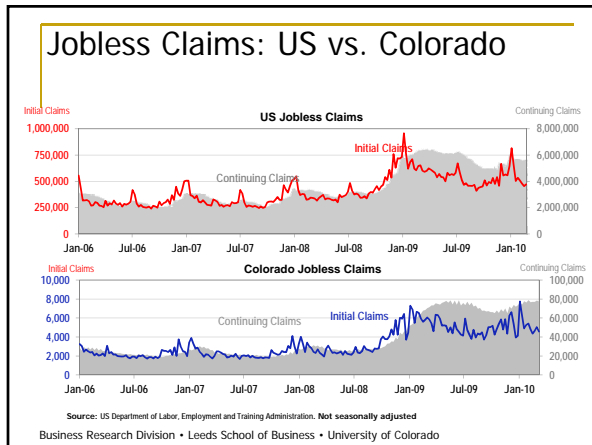
---

---

---

---

---



---

---

---

---

---

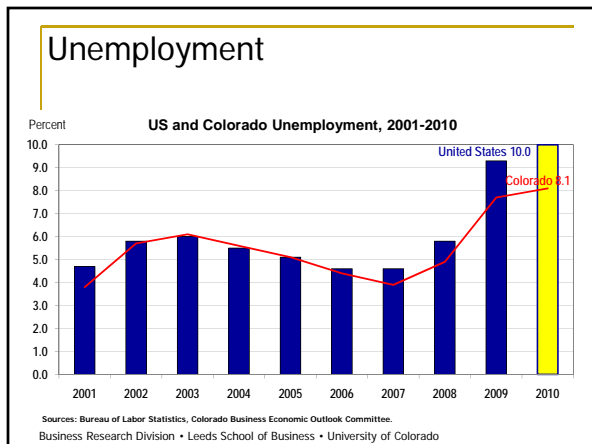
---

---

---

---

---



---

---

---

---

---

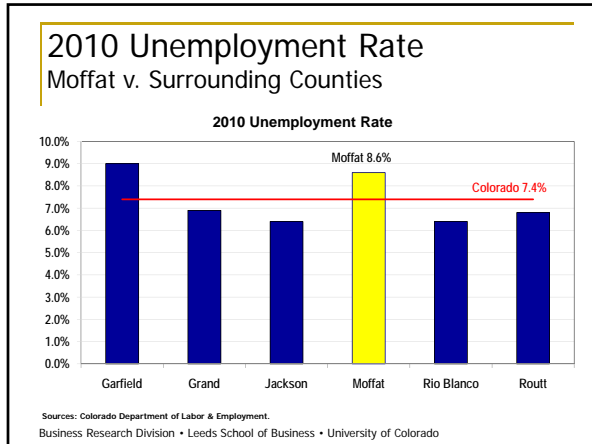
---

---

---

---

---



---

---

---

---

---

---

---

---

---

---

### Construction

Business Research Division • Leeds School of Business • University of Colorado

---

---

---

---

---

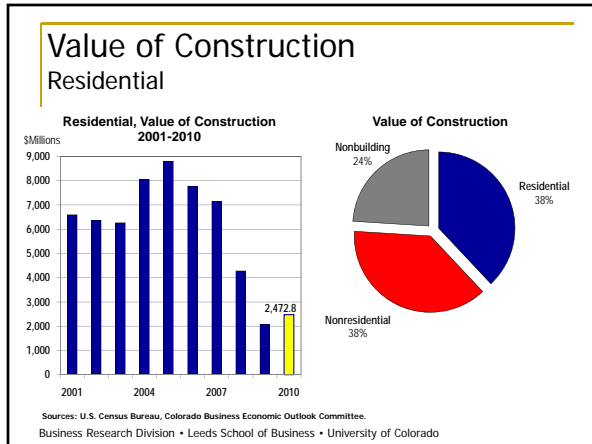
---

---

---

---

---



---

---

---

---

---

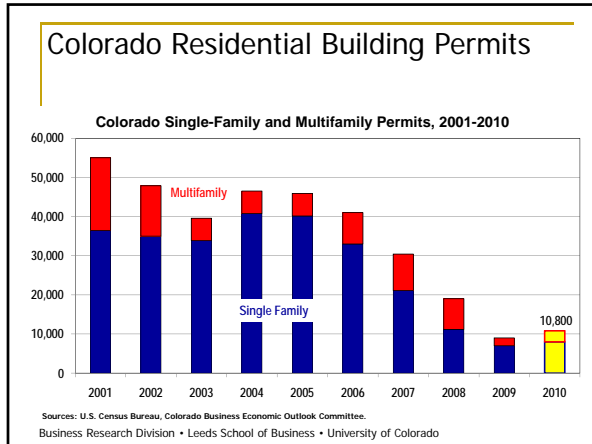
---

---

---

---

---




---

---

---

---

---

---

---

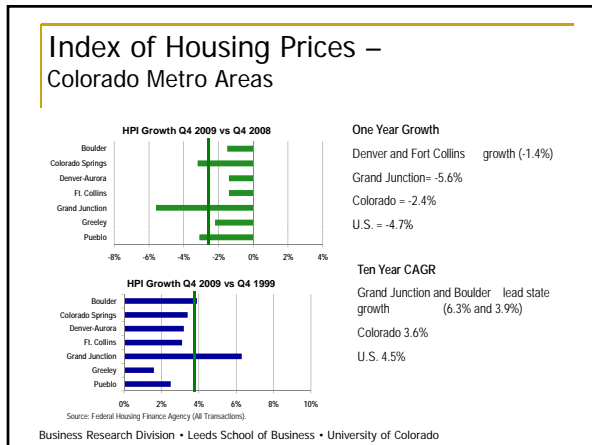
---

---

---

---

---




---

---

---

---

---

---

---

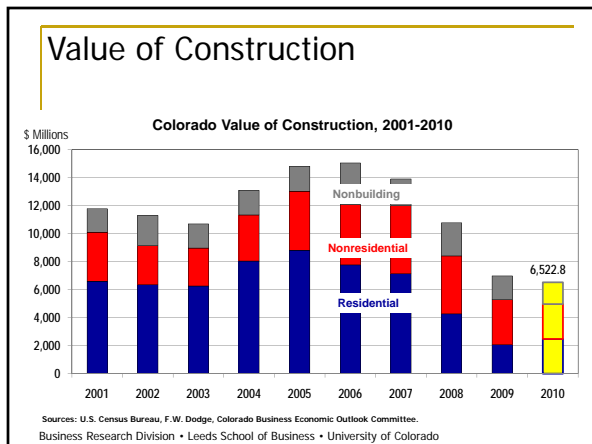
---

---

---

---

---




---

---

---

---

---

---

---

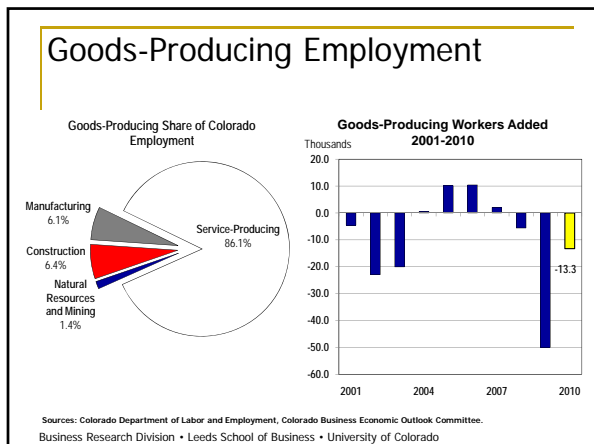
---

---

---

---

---




---

---

---

---

---

---

---

---

---

---




---

---

---

---

---

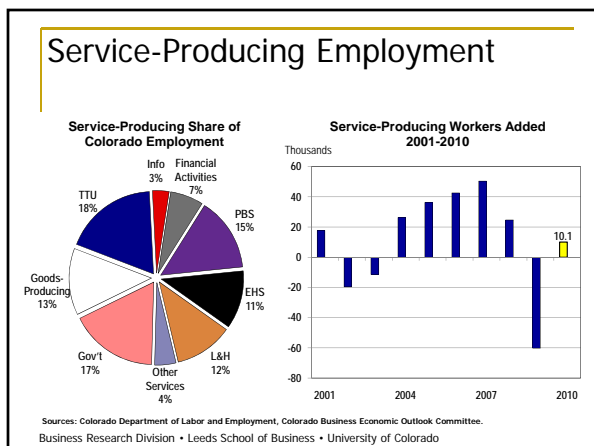
---

---

---

---

---




---

---

---

---

---

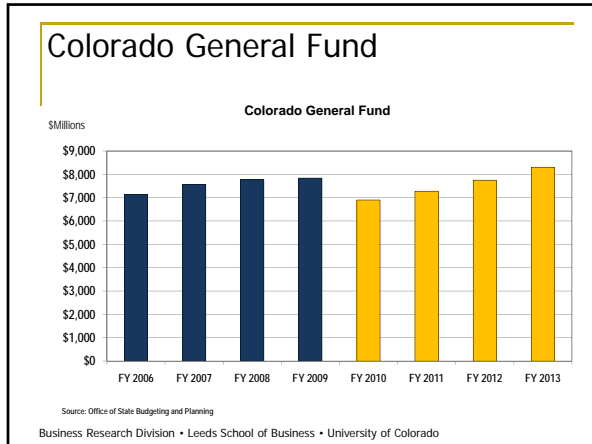
---

---

---

---

---




---

---

---

---

---

---

---

---

---

---

### State Factors

- State and local government finance and employment
- Loss of primary jobs
- Healthcare Reform
- Education funding

Business Research Division • Leeds School of Business • University of Colorado

---

---

---

---

---

---

---

---

---

---

### Does Colorado Lead or Lag Recovery?

<p><b>Pluses</b></p> <ul style="list-style-type: none"> <li>• Tech Base</li> <li>• Stimulus</li> <li>• Housing</li> <li>• Agriculture</li> <li>• Transportation</li> </ul>	<p><b>Minuses</b></p> <ul style="list-style-type: none"> <li>• Energy</li> <li>• Tourism</li> </ul>
--	---

Business Research Division • Leeds School of Business • University of Colorado

---

---

---

---

---

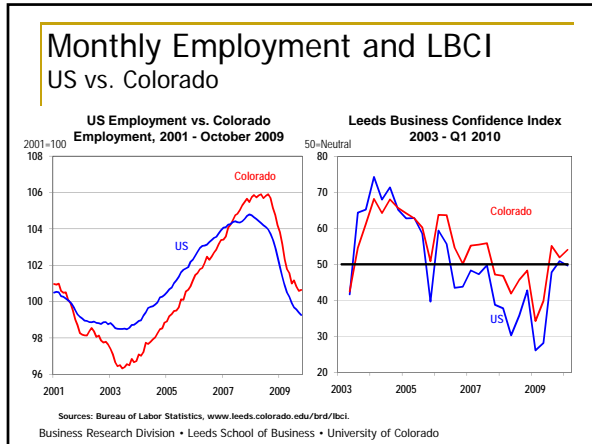
---

---

---

---

---



---

---

---

---

---

---

---

---

---

---

### LBCI LEEDS BUSINESS CONFIDENCE INDEX

[www.leeds.colorado.edu/brd/lbci](http://www.leeds.colorado.edu/brd/lbci)

**Colorado LEEDS**

**Welcome to the Leeds Business Confidence Index!**

Please take a few minutes to voice your opinion on how the Colorado and U.S. economies and your industry will perform during Q1 in 2010.

The LBCI (through the BECCI) gauges business leaders' opinions about national and state economic trends and how their industry will perform in the coming quarter.

The survey will remain open from December 1 through December 20.

Thank you for your time and for your past support of the BECCI.

The LBCI Staff

Comparing the upcoming quarter to the current quarter, what are your expectations for change in the following categories?

	Strong Decrease	Moderate Decrease	No Change	Moderate Increase	Strong Increase
Industry Sales	<input type="radio"/>	<input type="radio"/>	<input type="radio"/>	<input checked="" type="radio"/>	<input type="radio"/>
Industry Profits	<input type="radio"/>	<input type="radio"/>	<input type="radio"/>	<input checked="" type="radio"/>	<input type="radio"/>
Industry Hiring Plans	<input type="radio"/>	<input type="radio"/>	<input type="radio"/>	<input checked="" type="radio"/>	<input type="radio"/>
Industry Capital Expenditures	<input type="radio"/>	<input type="radio"/>	<input type="radio"/>	<input checked="" type="radio"/>	<input type="radio"/>

Business Research Division • Leeds School of Business • University of Colorado

---

---

---

---

---

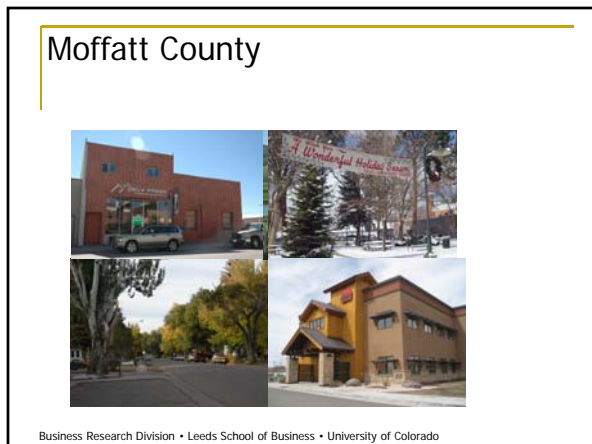
---

---

---

---

---



---

---

---

---

---

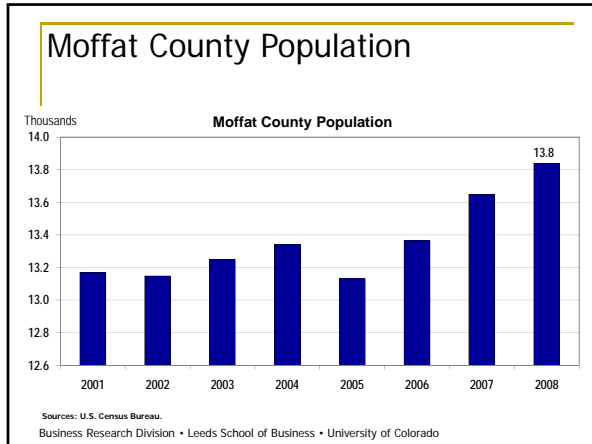
---

---

---

---

---




---

---

---

---

---

---

---

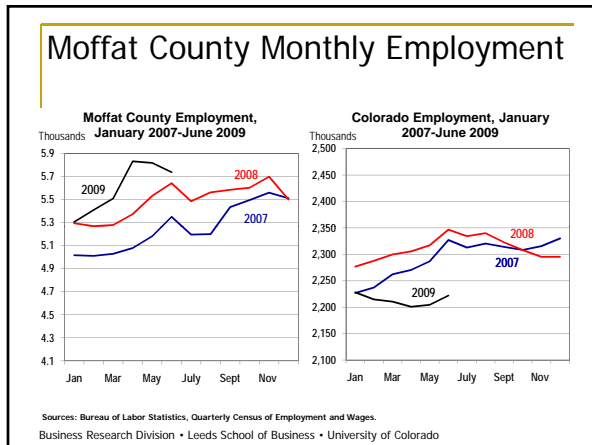
---

---

---

---

---




---

---

---

---

---

---

---

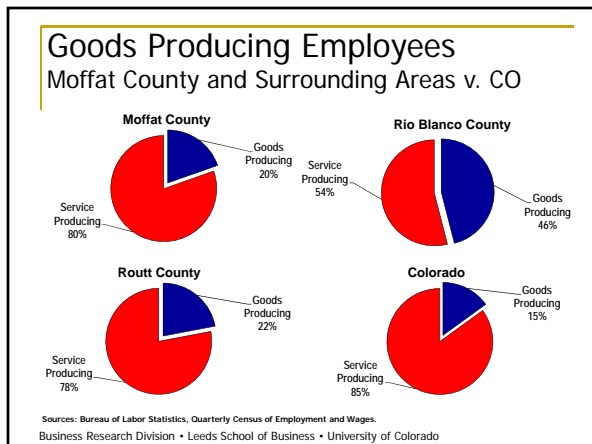
---

---

---

---

---




---

---

---

---

---

---

---

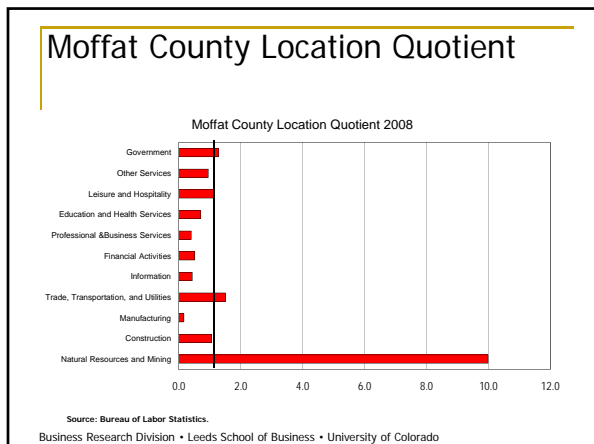
---

---

---

---

---




---

---

---

---

---

---

---

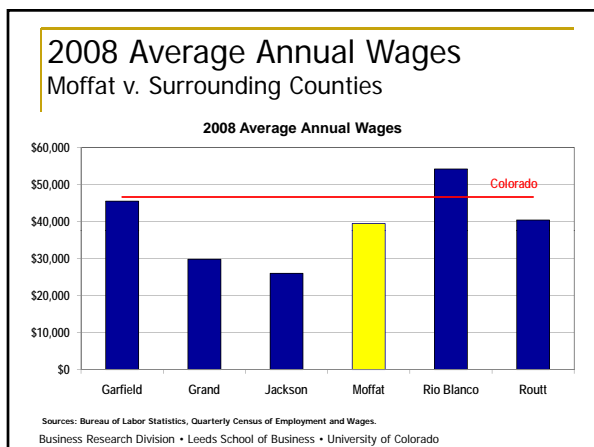
---

---

---

---

---




---

---

---

---

---

---

---

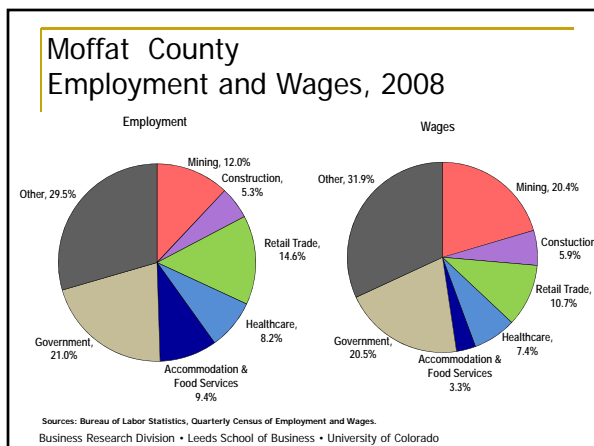
---

---

---

---

---




---

---

---

---

---

---

---

---

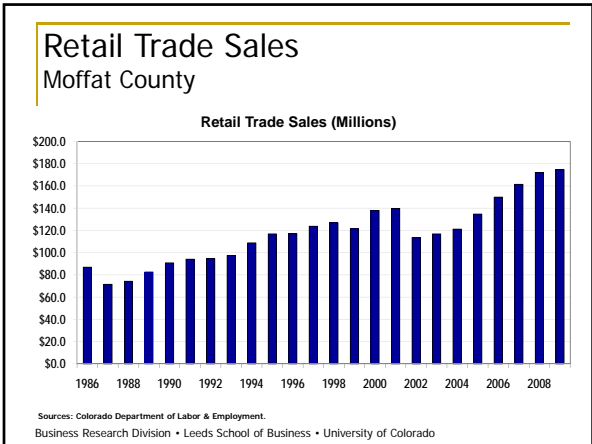
---

---

---

---





---

---

---

---

---

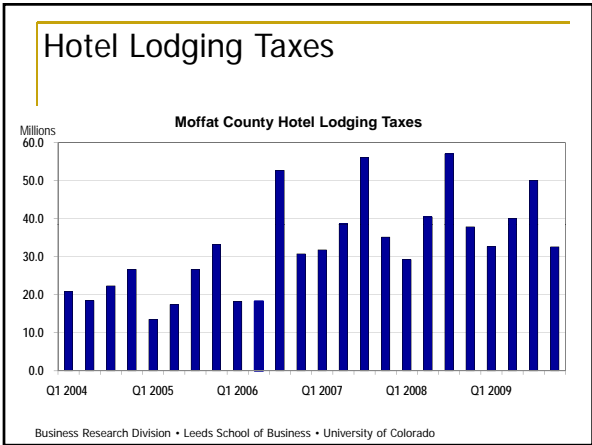
---

---

---

---

---



---

---

---

---

---

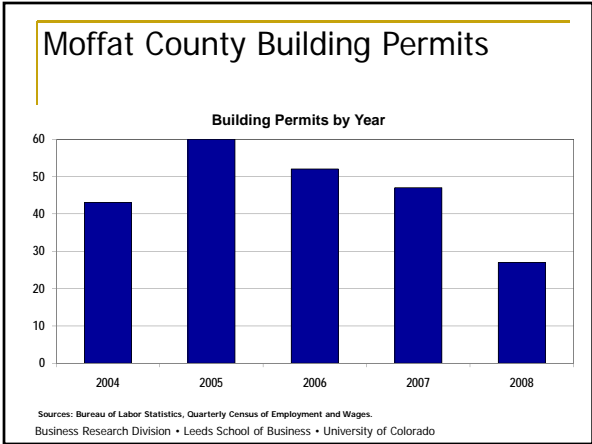
---

---

---

---

---



---

---

---

---

---

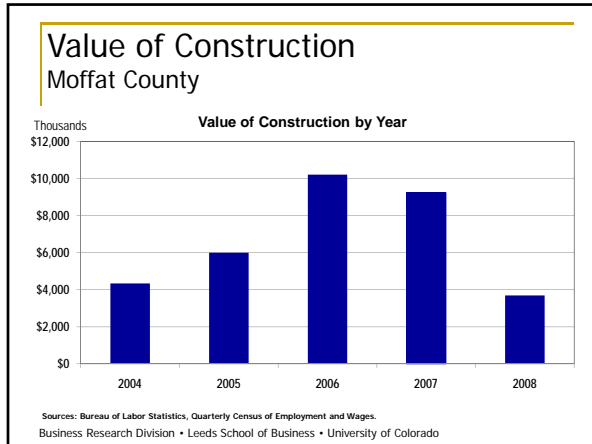
---

---

---

---

---



---

---

---

---

---

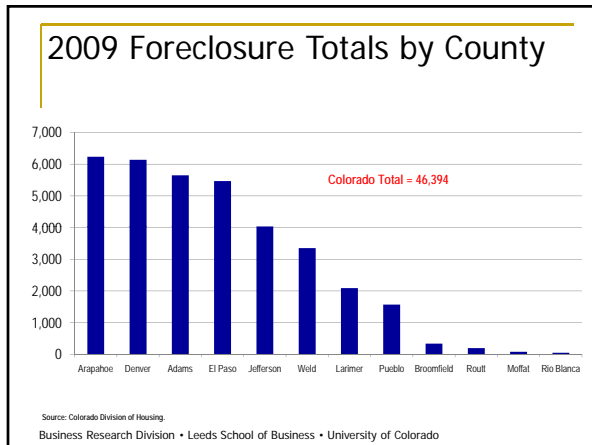
---

---

---

---

---



---

---

---

---

---

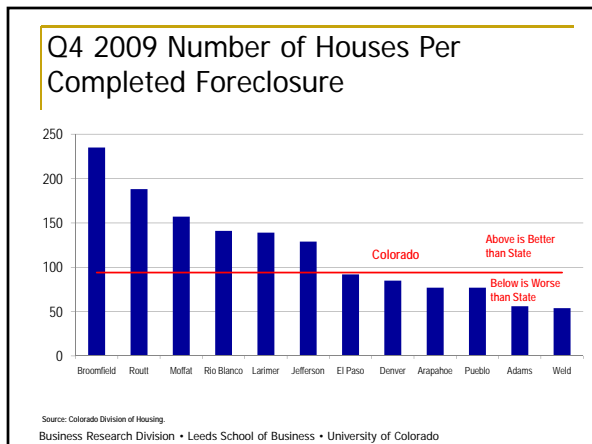
---

---

---

---

---



---

---

---

---

---

---

---

---

---

---

## Conclusion

- Tourism
- Utilities
- Natural Resources
- Agriculture
- Government
- Quality of Life



Business Research Division • Leeds School of Business • University of Colorado

---

---

---

---

---

---

---

---