

December 2010 Taxes, Remitted in January 2011 Sales, Use, and Accommodation Tax Report

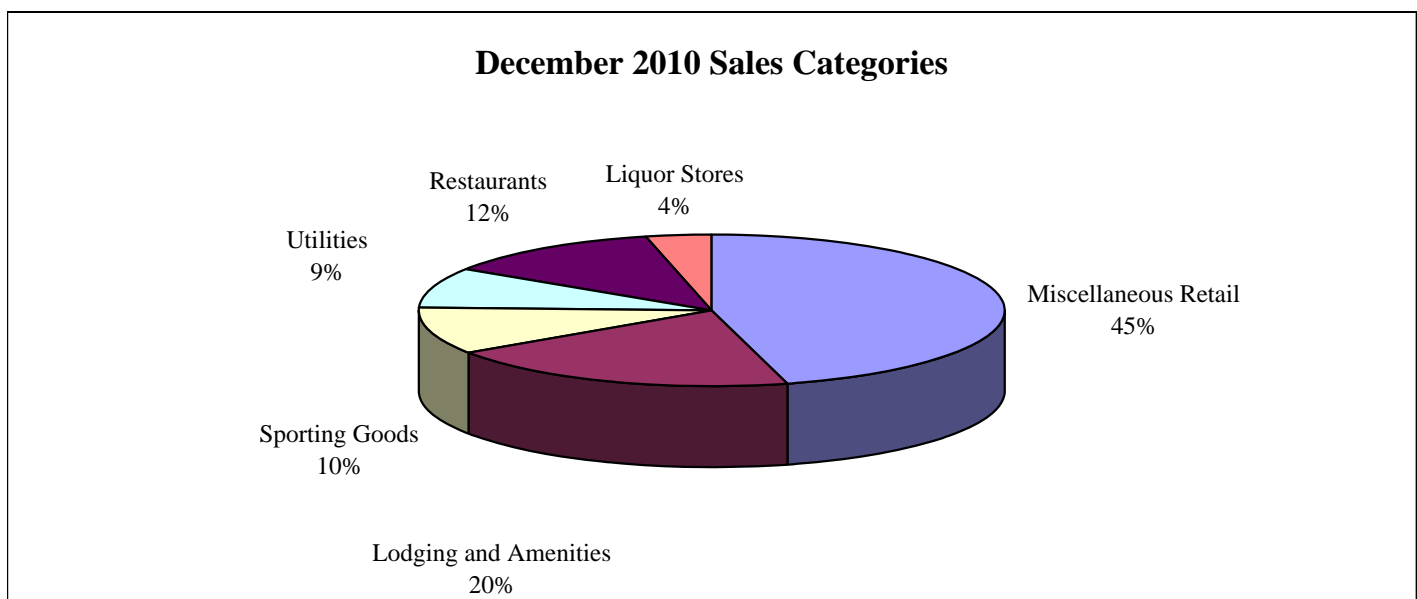
This City of Steamboat Springs Sales, Use, and Accommodation Tax Report examines tax collections for the month of December 2010, which were remitted to the City in January 2011.

Sales Tax

December 2010 sales tax collections increased 2.73% over sales tax collections for the month of December 2009. Year-to-date total sales tax collections are 1.00% lower than those of 2009 year-to-date.

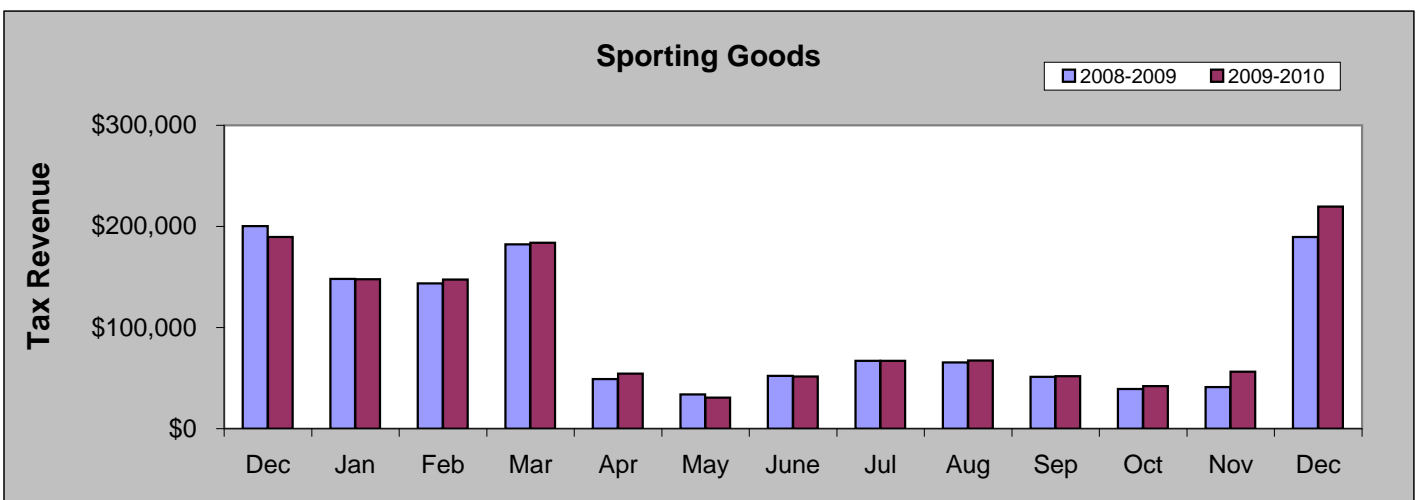
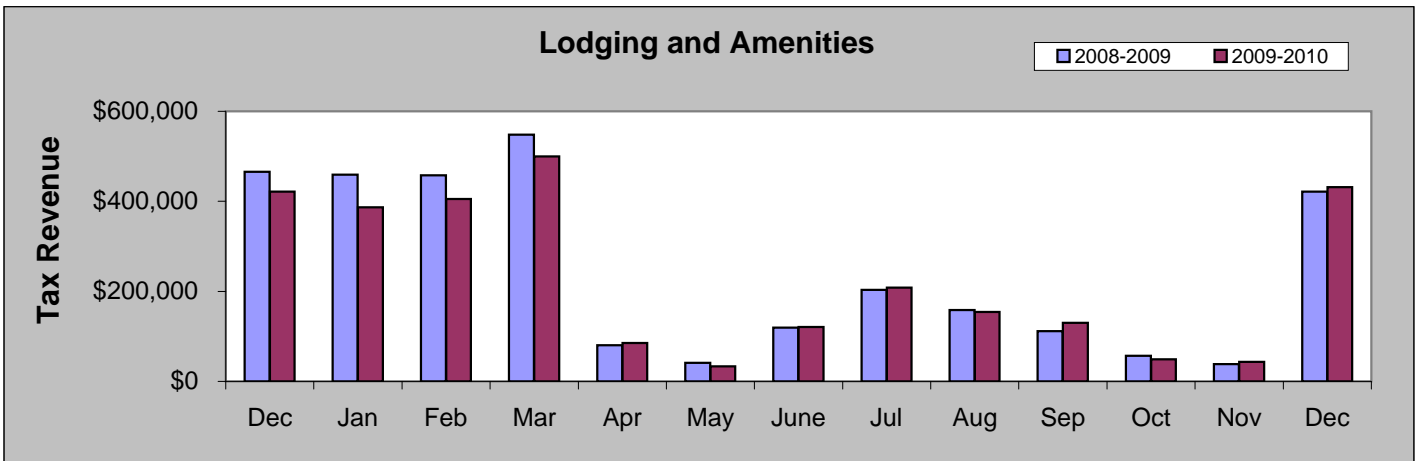
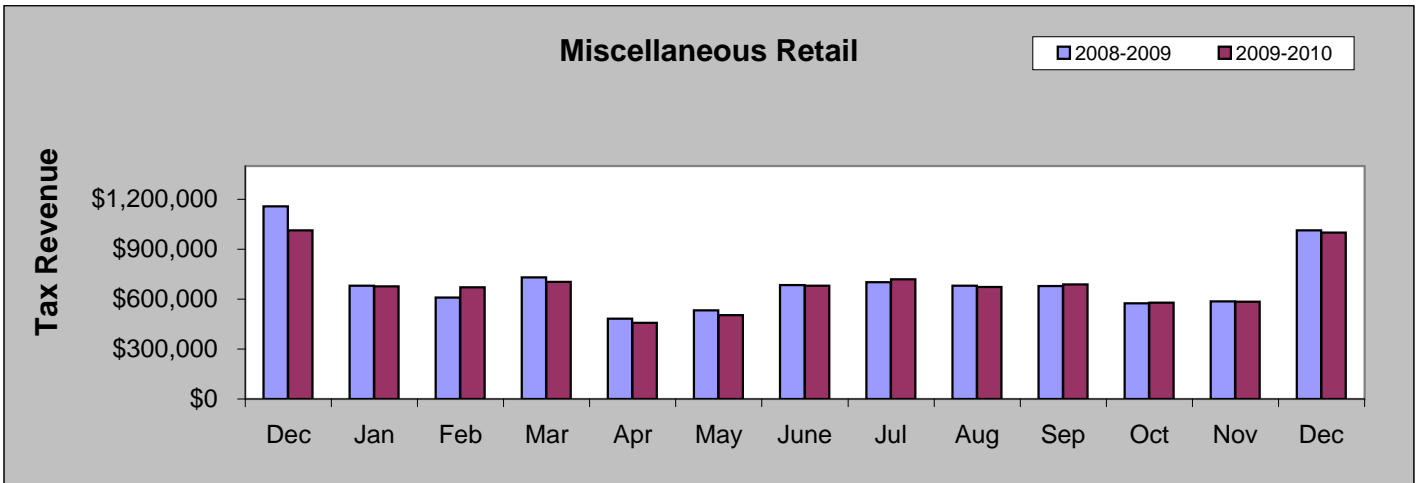
Sales Tax December 2010	Sales Tax December 2009	% increase/decrease over last year
\$2,188,436	\$2,130,350	2.73%

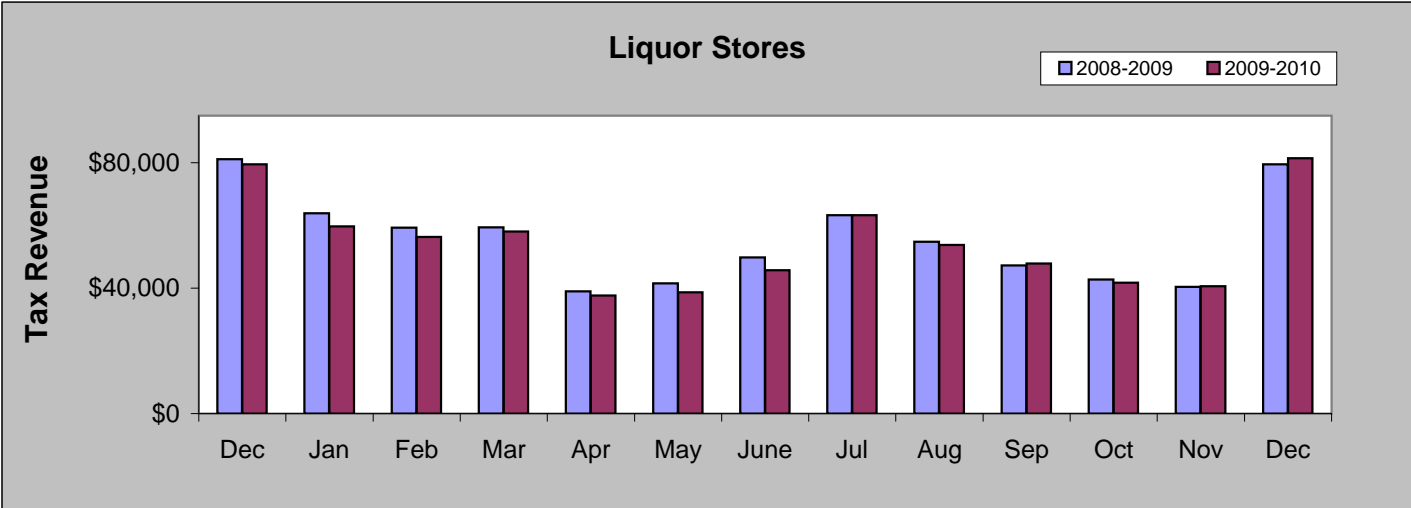
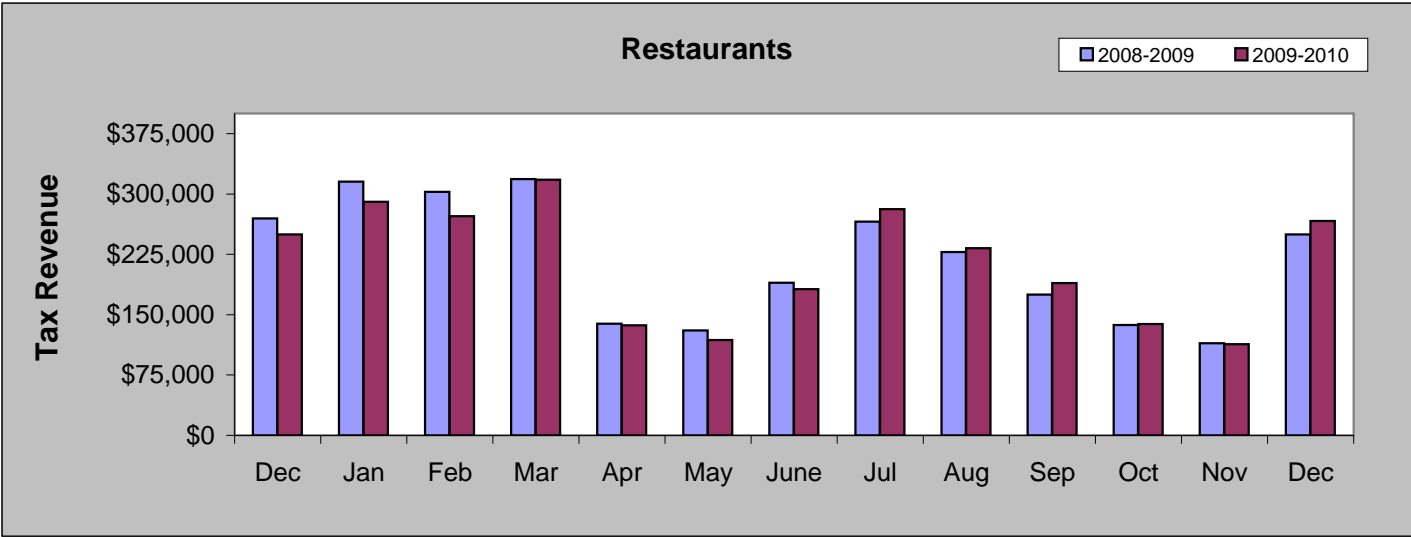
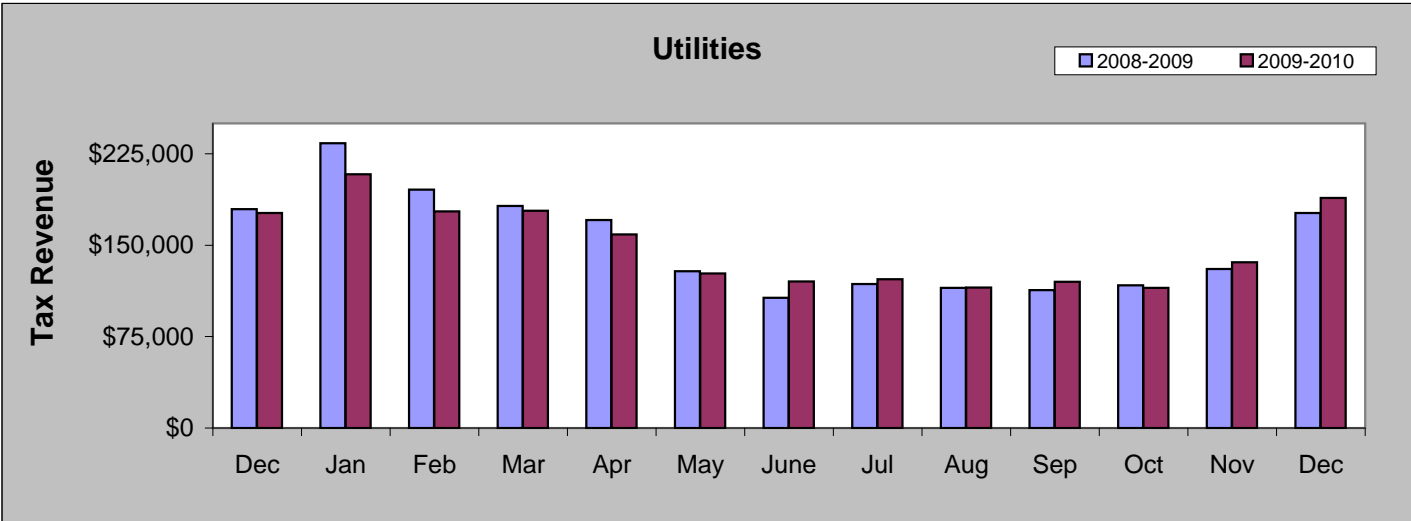
Sales Tax Year-to-date	Sales Tax 2009 YTD	% increase/decrease over last year
\$16,543,110	\$16,710,291	-1.00%



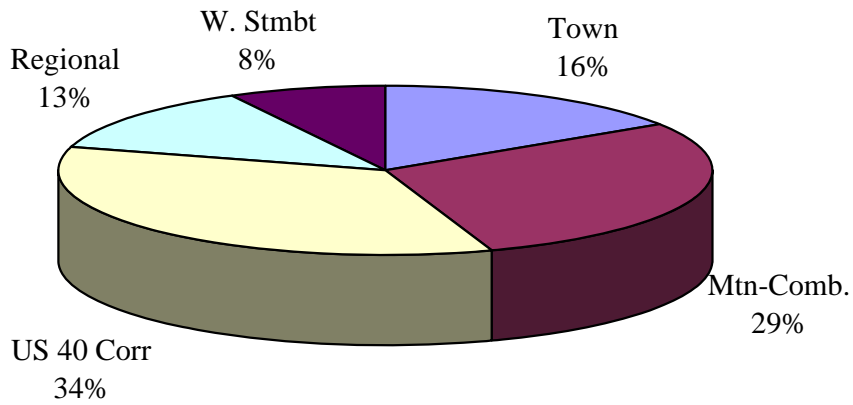
DECEMBER COMPARISON BY CATEGORY

	2009	2010	%
Miscellaneous Retail	\$1,013,330	\$1,000,092	-1.31%
Lodging and Amenities	\$421,919	\$431,813	2.34%
Sporting Goods	\$189,402	\$219,597	15.94%
Utilities	\$176,417	\$188,916	7.08%
Restaurants	\$249,783	\$266,596	6.73%
Liquor Stores	\$79,501	\$81,421	2.42%

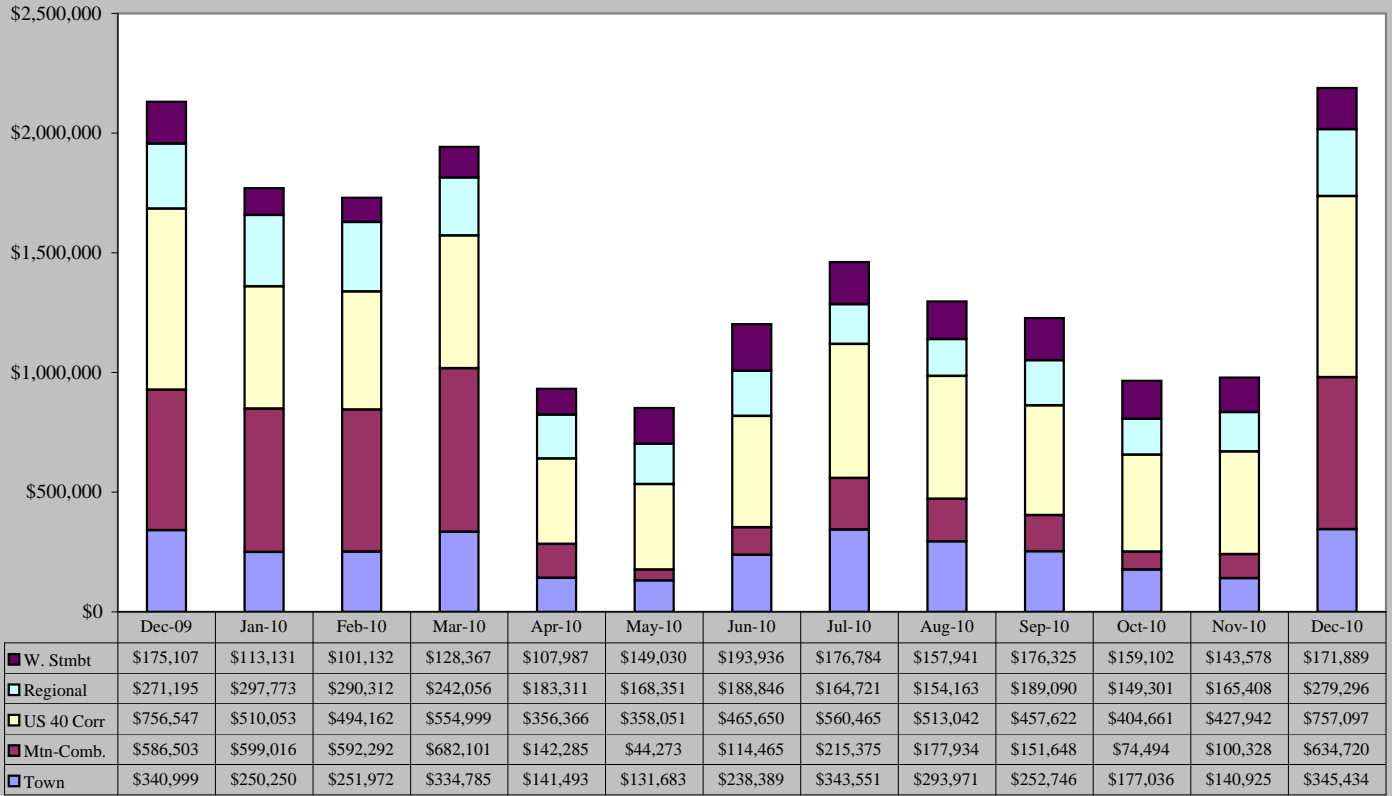




December 2010 Sales Tax By Area

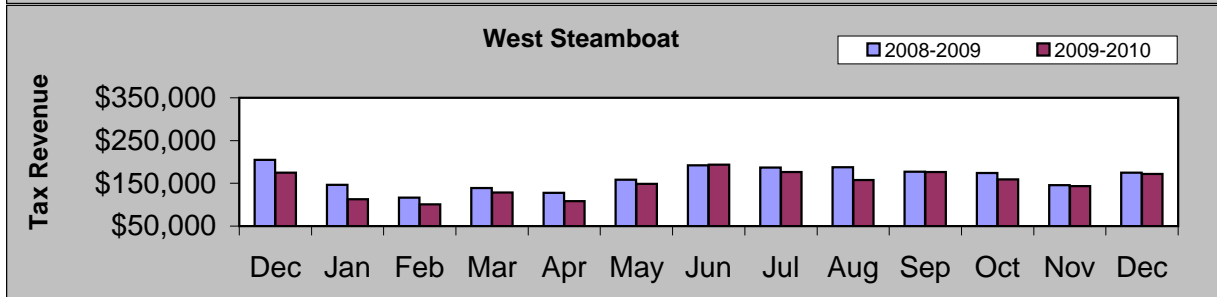
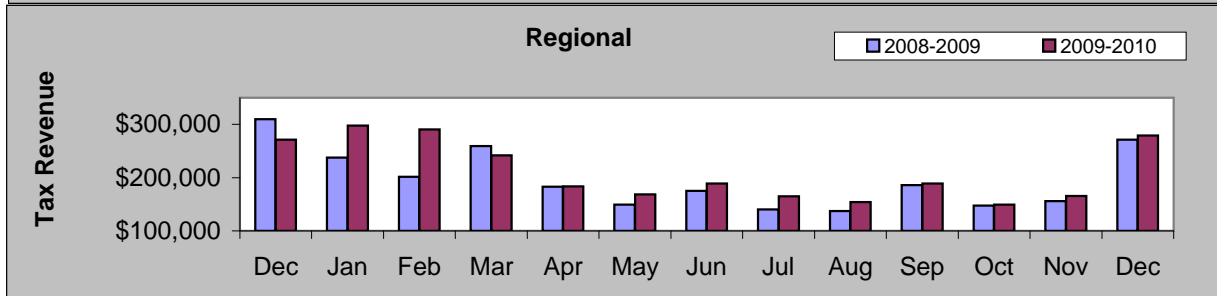
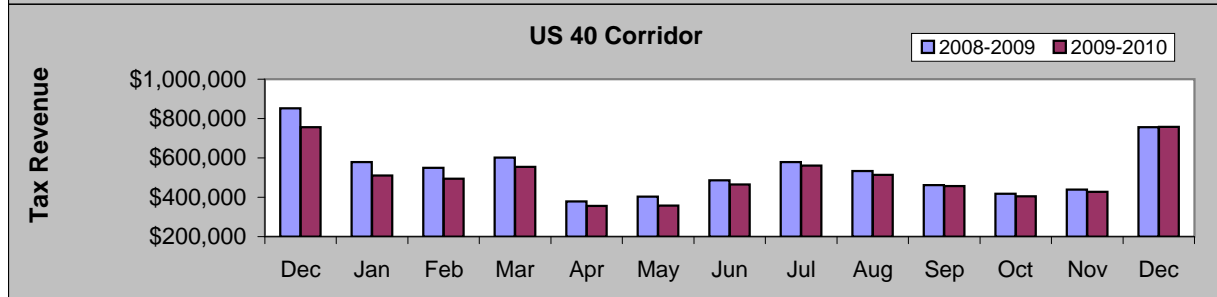
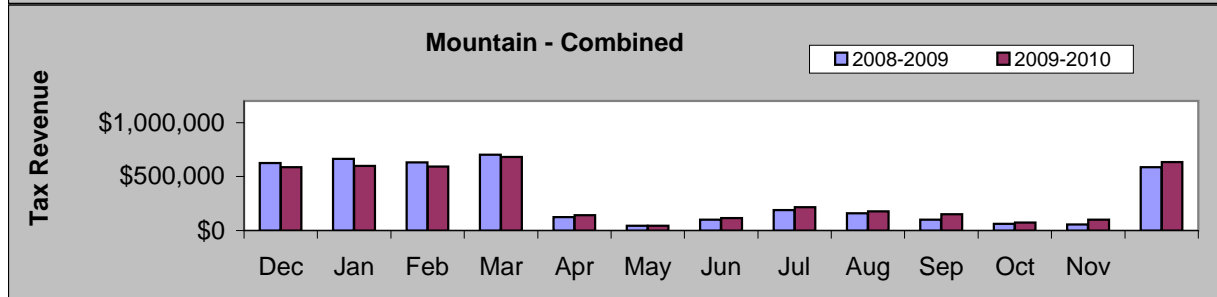
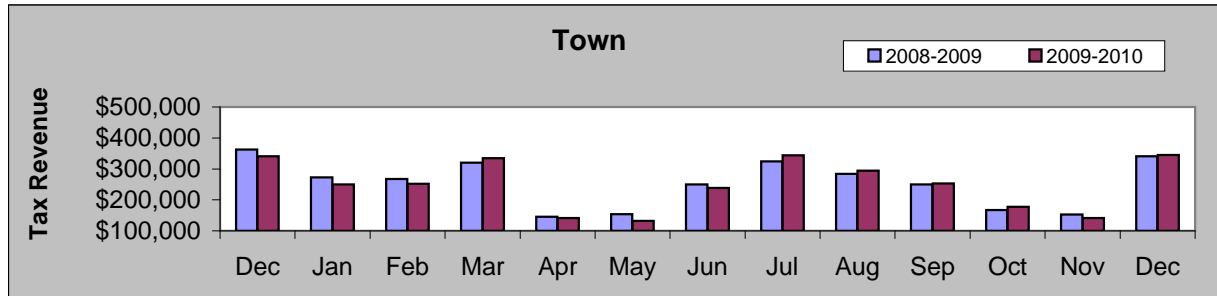


December 2009 - December 2010



DECEMBER COMPARISON BY AREA

Area	2009	2010	%
Town	\$340,999	\$345,434	1.30%
Mountain - Combined	\$586,503	\$634,720	8.22%
US 40 Corridor	\$756,547	\$757,097	0.07%
Regional	\$271,195	\$279,296	2.99%
West Steamboat	\$175,107	\$171,889	-1.84%



Building Use Tax

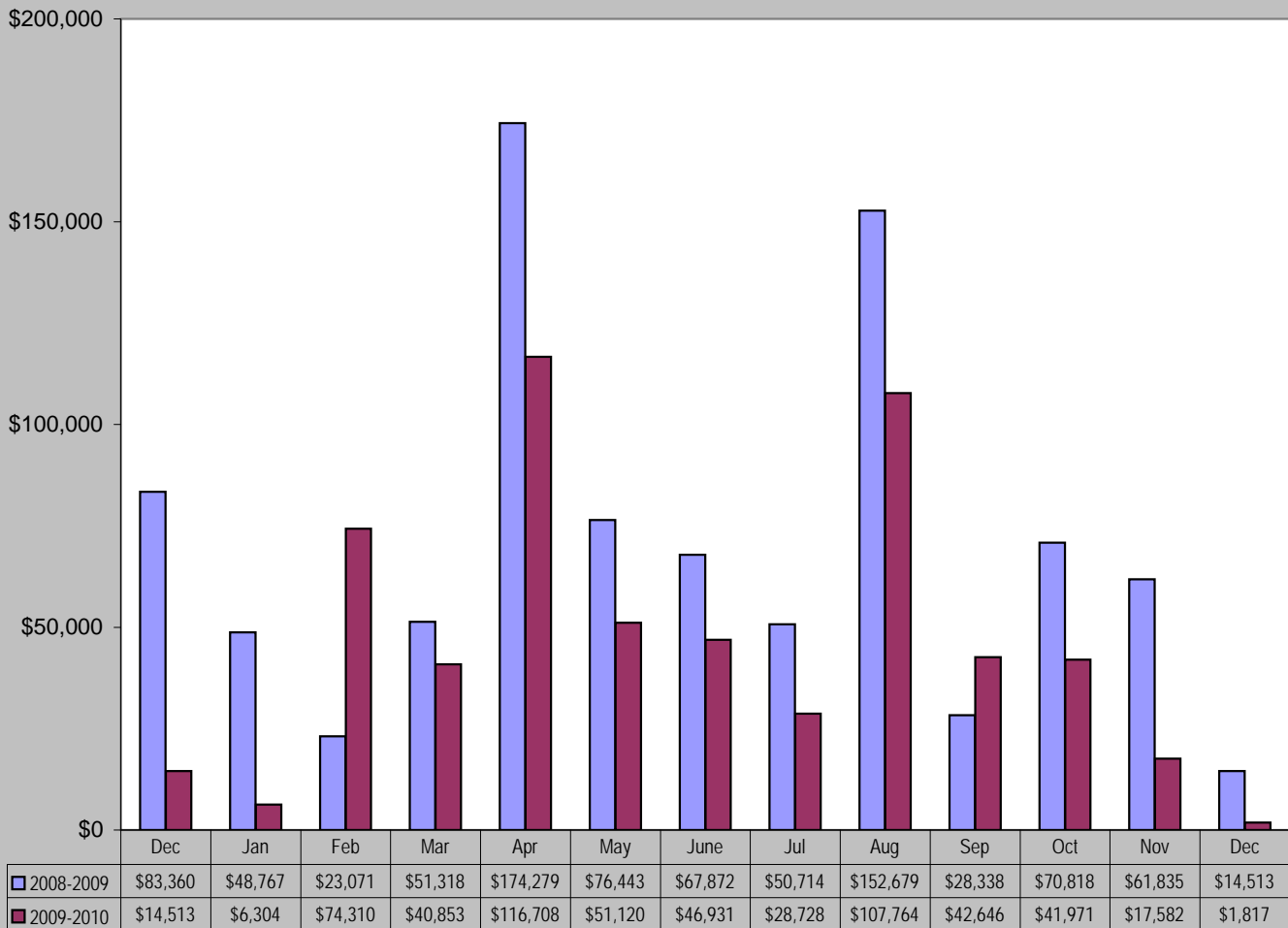
December 2010 Building Use Tax collections decreased 87.48% from December 2009.

Year-to-date building use tax collections decreased 29.72%.

Dec-10 Building Use Tax	Dec-09 Building Use Tax	% increase/decrease
\$1,817	\$14,513	-87.48%

Building Use Tax YTD 2010	Building Use Tax YTD 2009	% increase/decrease
\$576,734	\$820,647	-29.72%

Building Use Tax - 2008/2009 vs. 2009/2010



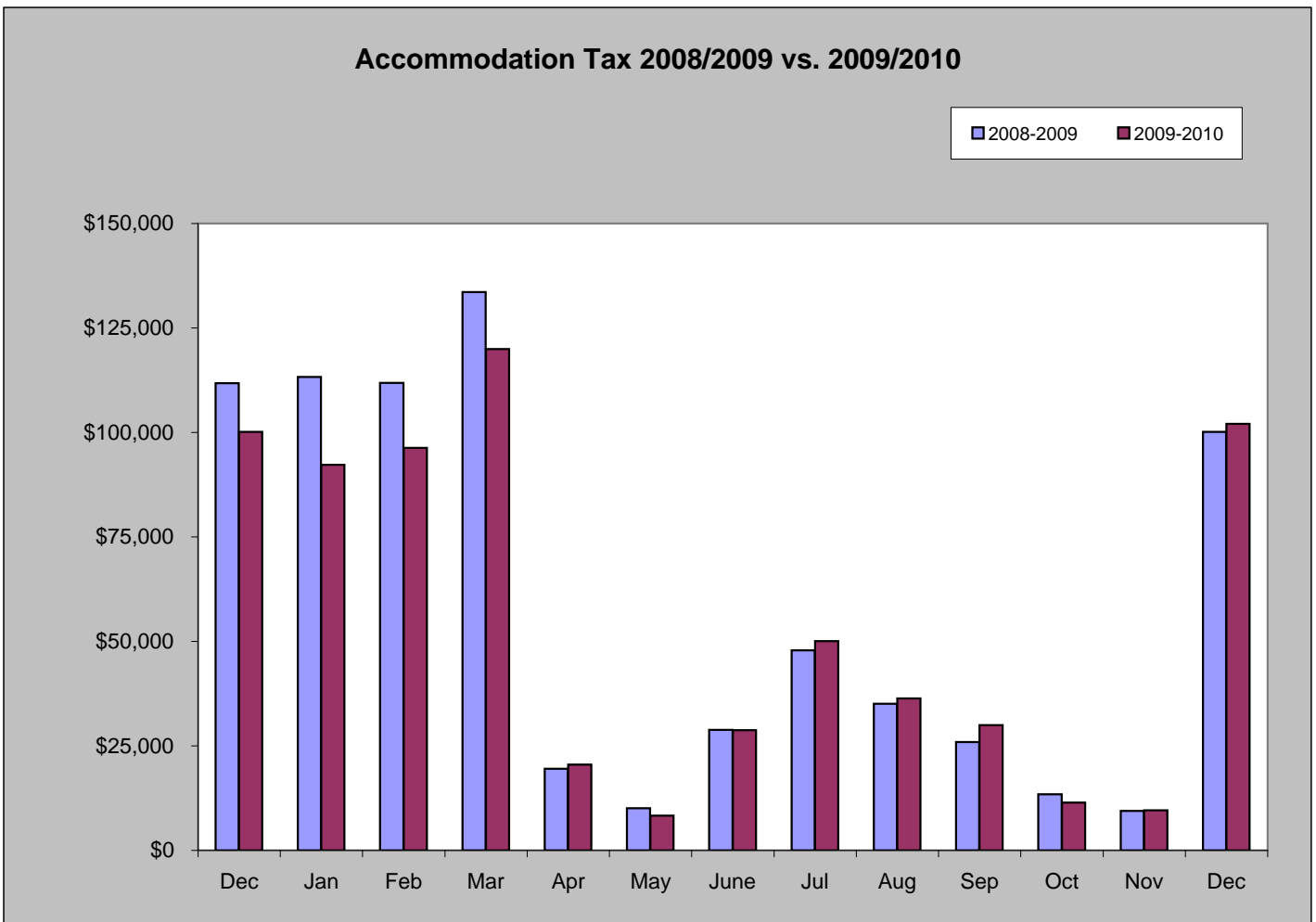
Accommodation Tax

December 2010 accommodation tax increased 1.96% from December 2009.

Year-to-date accommodation tax decreased 6.71%.

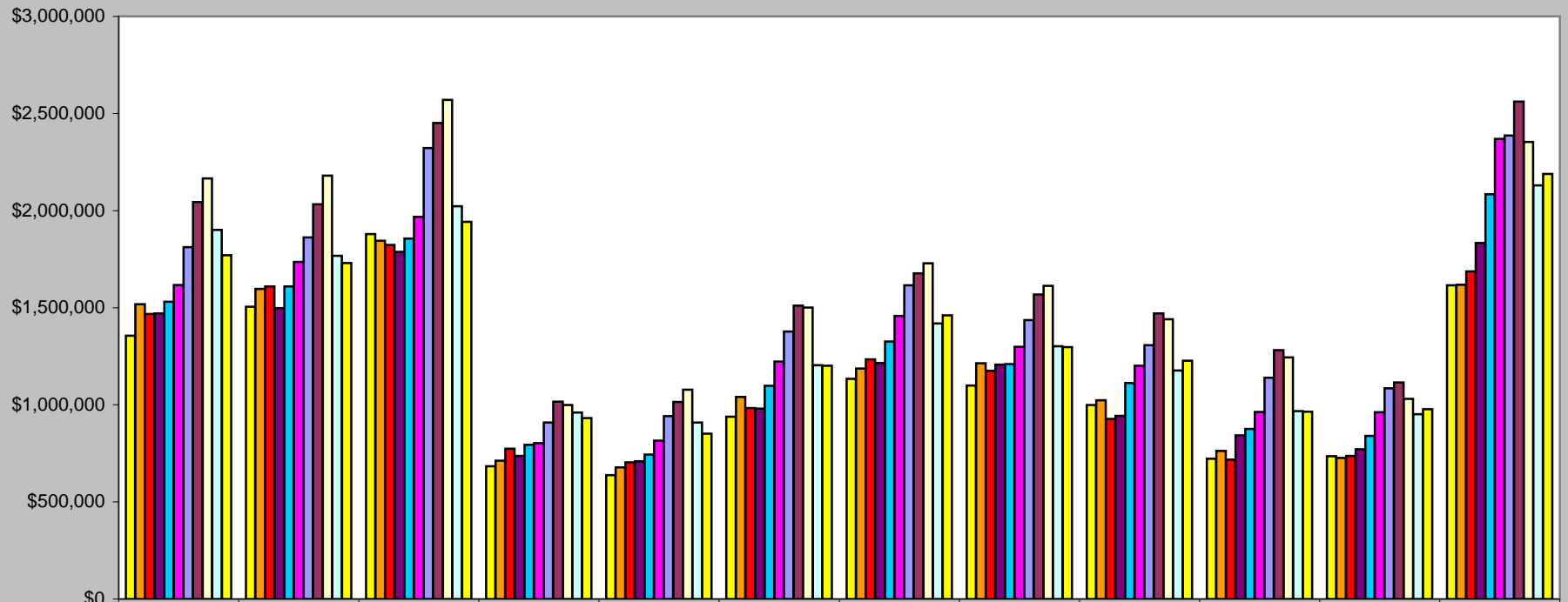
Dec-10 Accommodation Tax	Dec-09 Accommodation Tax	% increase/decrease
\$102,094	\$100,130	1.96%

Accommodation Tax YTD 2010	Accommodation Tax YTD 2009	% increase/decrease
\$605,559	\$649,106	-6.71%



Historical Sales Tax Data

Sales Tax Totals - 2000 to 2010



	January	February	March	April	May	June	July	August	September	October	November	December
2000	\$1,355,249	\$1,505,684	\$1,879,789	\$684,244	\$637,578	\$939,481	\$1,133,251	\$1,098,829	\$998,420	\$722,617	\$734,644	\$1,615,197
2001	\$1,517,372	\$1,596,296	\$1,844,737	\$712,155	\$678,521	\$1,040,995	\$1,186,620	\$1,214,665	\$1,023,255	\$762,275	\$726,706	\$1,618,152
2002	\$1,468,242	\$1,609,764	\$1,822,635	\$774,194	\$704,180	\$983,142	\$1,233,685	\$1,175,569	\$927,496	\$718,049	\$736,818	\$1,687,509
2003	\$1,471,061	\$1,497,398	\$1,787,877	\$737,255	\$708,947	\$979,861	\$1,215,159	\$1,207,373	\$942,596	\$842,980	\$770,632	\$1,833,614
2004	\$1,530,388	\$1,609,507	\$1,855,895	\$793,619	\$744,456	\$1,097,619	\$1,325,813	\$1,209,657	\$1,112,747	\$875,854	\$839,590	\$2,083,871
2005	\$1,617,152	\$1,735,422	\$1,968,239	\$803,359	\$815,925	\$1,223,263	\$1,457,514	\$1,299,302	\$1,201,406	\$962,731	\$961,551	\$2,369,566
2006	\$1,811,413	\$1,861,558	\$2,322,443	\$908,584	\$941,595	\$1,377,269	\$1,614,695	\$1,436,115	\$1,307,845	\$1,139,648	\$1,084,858	\$2,386,275
2007	\$2,044,667	\$2,032,045	\$2,450,620	\$1,016,601	\$1,015,101	\$1,510,706	\$1,676,821	\$1,567,534	\$1,470,714	\$1,281,546	\$1,115,446	\$2,561,705
2008	\$2,166,093	\$2,180,532	\$2,570,347	\$999,144	\$1,077,244	\$1,500,946	\$1,728,329	\$1,612,531	\$1,440,373	\$1,244,023	\$1,030,654	\$2,354,077
2009	\$1,900,660	\$1,767,622	\$2,022,205	\$960,333	\$908,729	\$1,203,304	\$1,419,472	\$1,301,838	\$1,176,374	\$967,698	\$951,706	\$2,130,350
2010	\$1,770,224	\$1,729,871	\$1,942,308	\$931,441	\$851,388	\$1,201,285	\$1,460,896	\$1,297,053	\$1,227,433	\$964,593	\$978,182	\$2,188,436