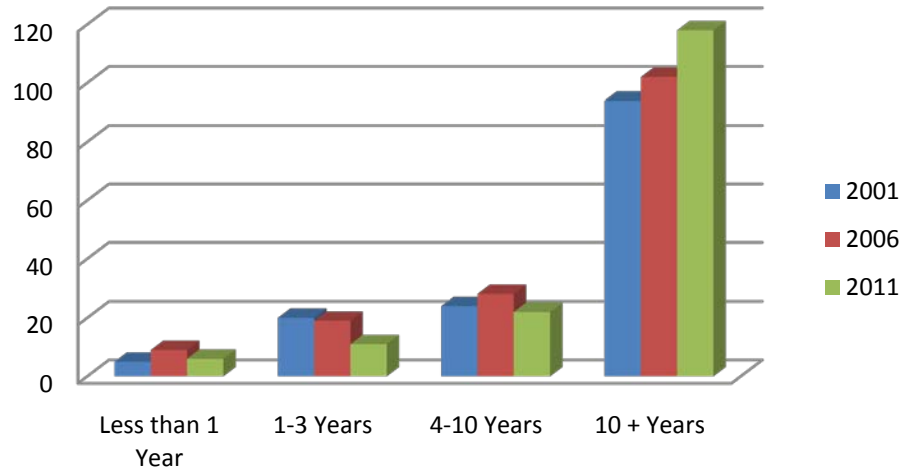


Craig Police Department Community Survey

Surveys	2001	2006	2011
Sent	219	550	644
Returned	147	156	152
	67%	28%	24%

Not all people answered every question. For example, on the question of, **Citizen Involvement - Are you willing to Help CPD** in 2001 143 answered, in 06 – 152 and in 2011 only 139 answered the question.

How Long Have You Lived In Craig



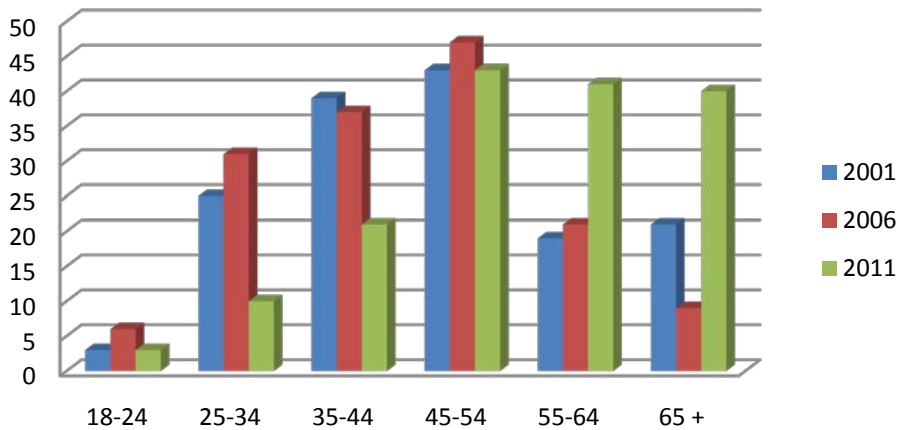
Total Responses:

2001 - 147

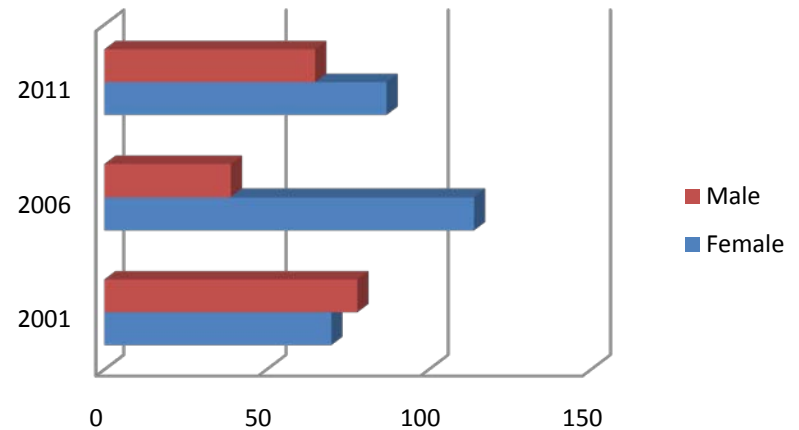
2006 - 156

2011 - 152

What is your Age



Gender

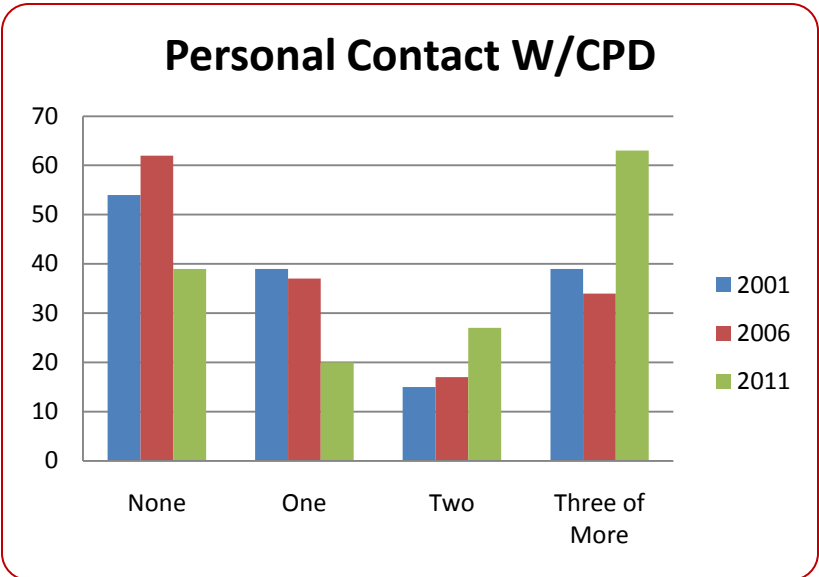
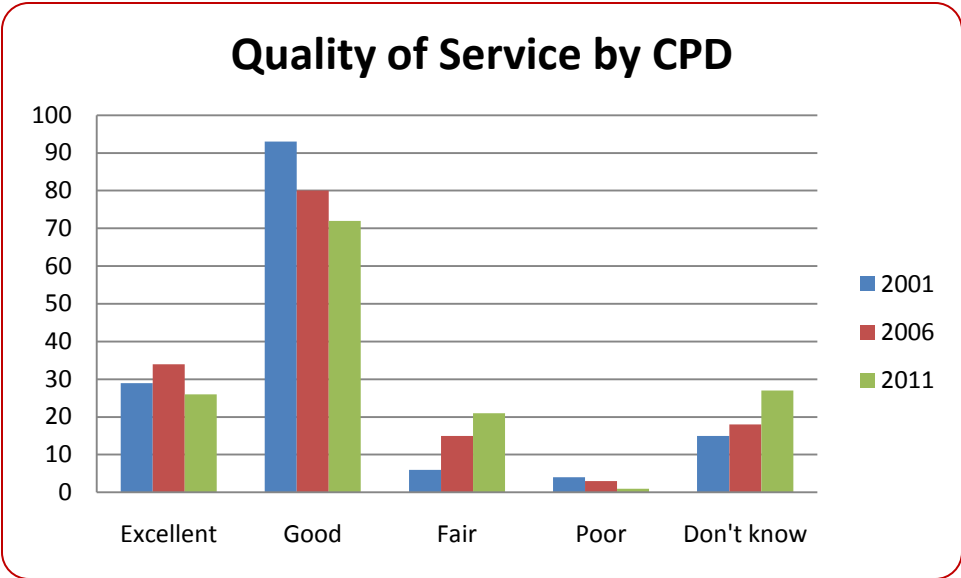
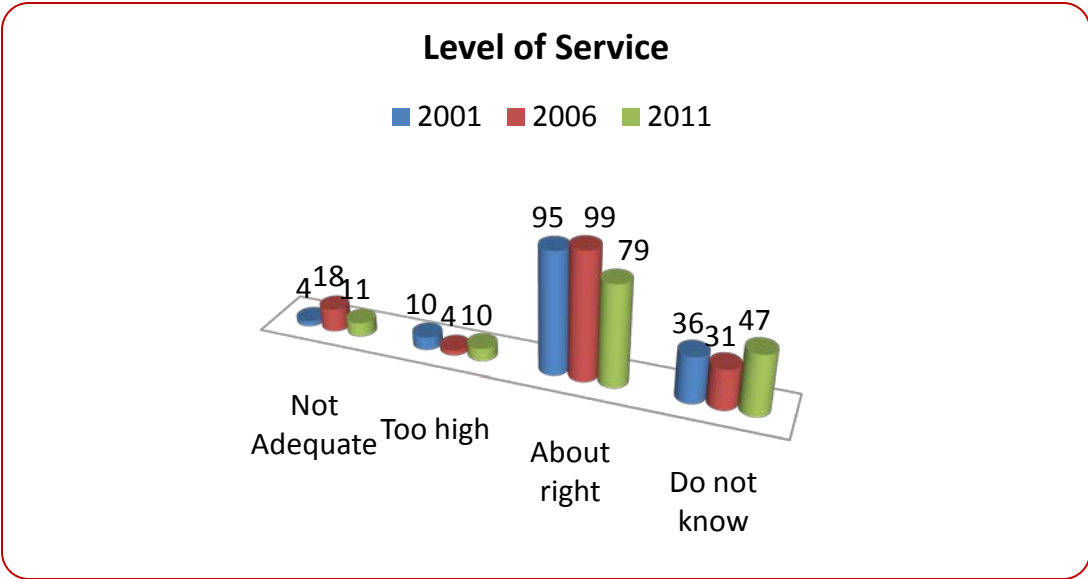


Total Responses:

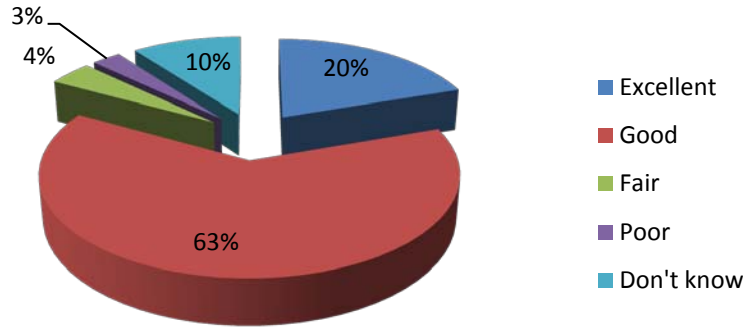
2001 - 147

2006 - 156

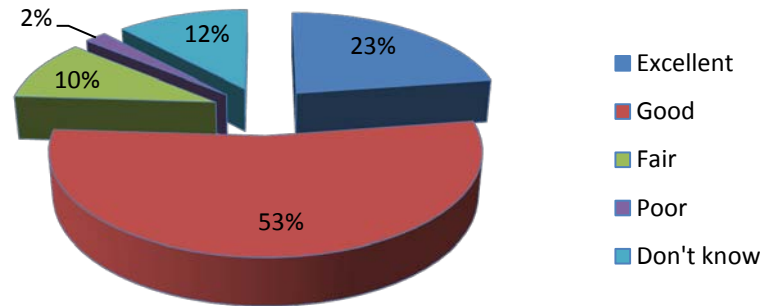
2011 - 152



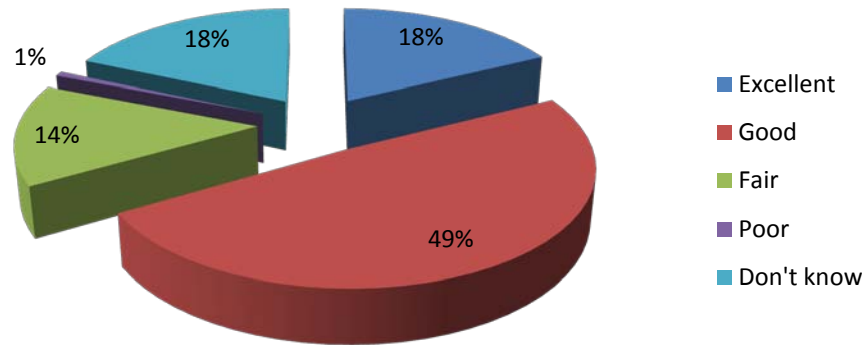
Quality of Service 2001



Quality of Service 2006

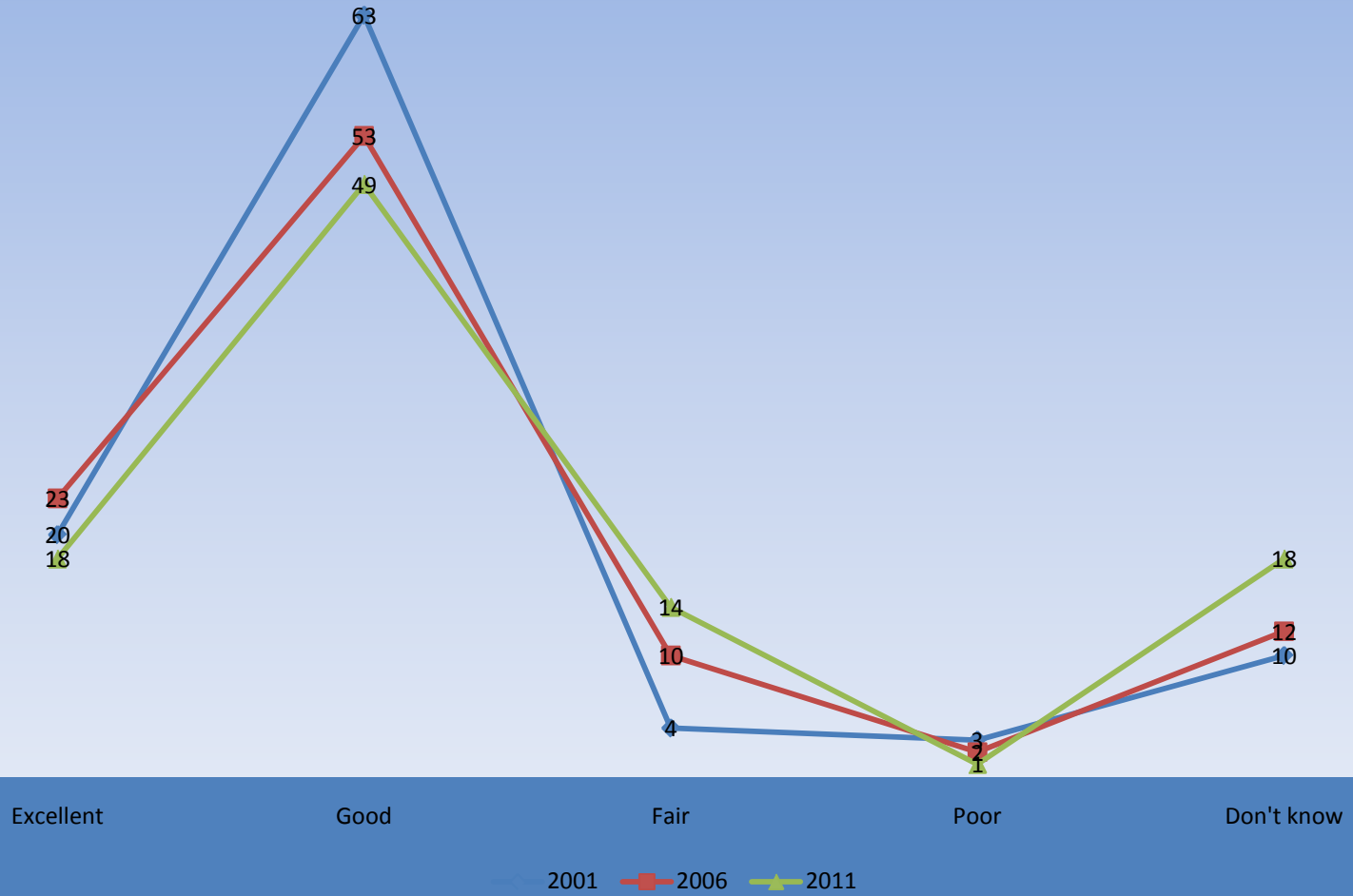


Quality of Service 2011

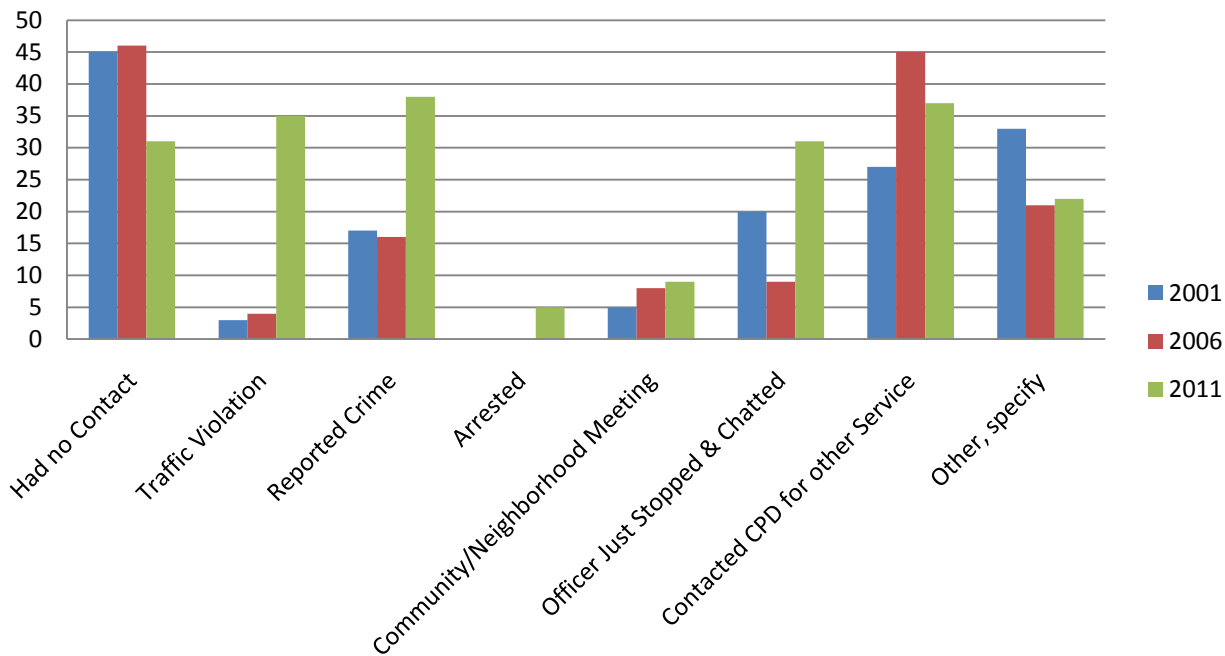


Total Responses:
2001 - 147
2006 - 156
2011 - 152

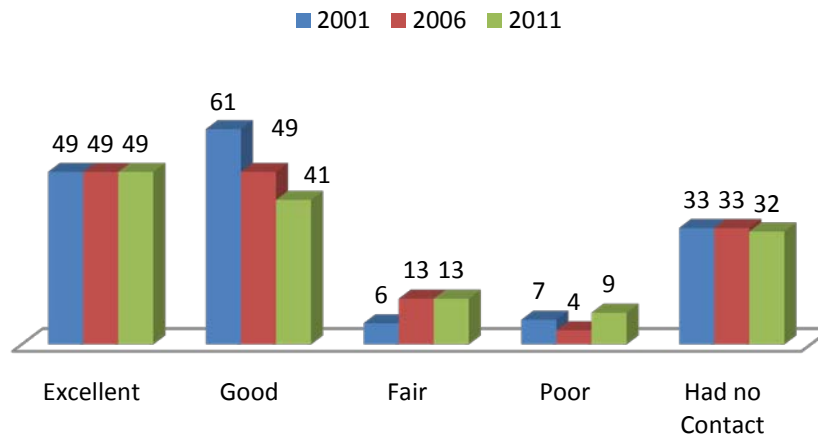
Quality of Service by Year by percentage of Response



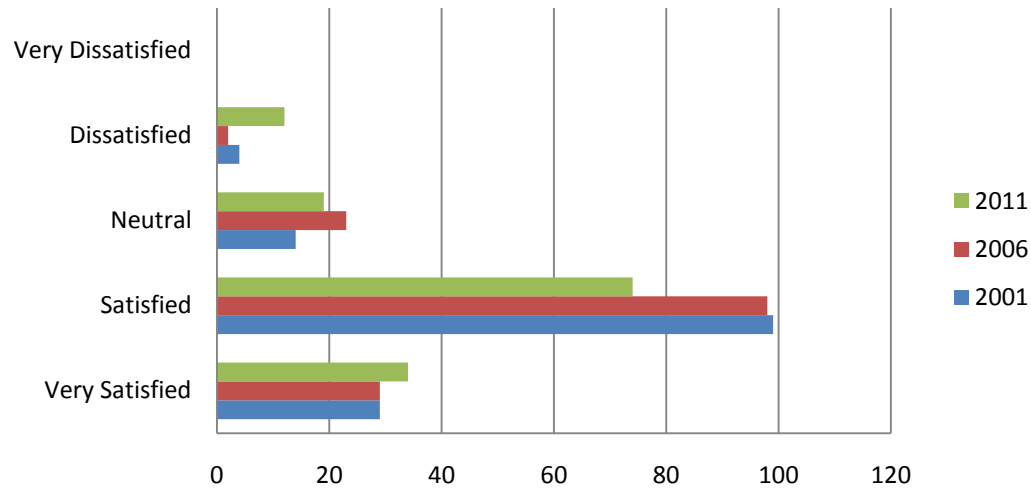
Reason for Contact W/CPD



Quality of Recent Contact



How satisfied are you w/community



Section Three- Public Safety Service

Year		Excellent	Good	Fair	Poor	Don't Know	
2001	Preventing Crime	12	55	33	6	40	146
		8%	38%	23%	4%	27%	
2006		9	83	27	9	21	149
		6%	56%	18%	6%	14%	
2011		12	51	20	5	26	114
		11%	45%	18%	4%	23%	
2001	Responding in an Effective Manner	23	66	13	8	31	141
		16%	47%	9%	6%	22%	
2006		34	57	23	6	31	151
		23%	38%	15%	4%	21%	
2011		17	59	10	8	24	118
		14%	50%	8%	7%	20%	
2001	Reducing Citizens' Fear of Crime	18	60	25	4	27	134
		13%	43%	18%	3%	19%	
2006		17	69	35	7	22	150
		11%	46%	23%	5%	15%	
2011		15	33	23	3	29	103
		15%	32%	22%	3%	28%	

Section Three- Public Safety Service

Year		Excellent	Good	Fair	Poor	Don't Know	
2001	Obtaining Support from Community	17	62	29	11	25	144
		12%	44%	21%	8%	18%	
2006		22	72	25	6	25	150
		15%	48%	17%	4%	17%	
2011		15	44	32	9	22	122
		12%	36%	26%	7%	18%	
2001	Delivering full range of Law Enforcement Service	23	60	27	5	28	143
		16%	43%	19%	4%	20%	
2006		30	67	25	2	27	151
		20%	45%	17%	1%	18%	
2011		13	49	18	5	28	113
		12%	43%	16%	4%	25%	
2001	Providing Safety & Education/Programs	23	60	18	8	25	134
		16%	43%	13%	6%	18%	
2006		32	59	33	5	22	151
		21%	40%	22%	3%	15%	
2011		16	47	14	5	31	113
		14%	42%	12%	4%	27%	

Section Three- Public Safety Service

Year		Excellent	Good	Fair	Poor	Don't Know	
2001	Working With Citizens Groups	11	47	21	4	59	142
		8%	33%	15%	3%	42%	
2006		26	52	33	5	34	150
		17%	35%	22%	3%	23%	
2011		13	38	23	6	35	115
		11%	33%	20%	5%	30%	
2001	Preventing Social Disorder	23	63	22	6	26	140
		16%	45%	16%	4%	18%	
2006		22	66	26	12	26	152
		15%	44%	17%	8%	17%	
2011		9	36	21	7	38	111
		8%	32%	19%	6%	34%	
2001	Working With Special Populations	16	41	23	7	40	127
		11%	29%	16%	5%	28%	
2006		21	52	30	4	44	151
		14%	35%	20%	3%	30%	
2011		6	36	13	5	52	112
		5%	32%	12%	4%	46%	

Section Three- Public Safety Service

Year		Excellent	Good	Fair	Poor	Don't Know	
2001	Enforcement that meets Community Needs	15	59	28	6	34	142
		11%	42%	20%	4%	24%	
2006		20	65	34	10	22	151
		13%	44%	23%	7%	15%	
2011		9	51	25	9	19	113
		8%	45%	22%	8%	17%	
2001	Learning/Spending time with Residents	11	32	24	18	50	135
		8%	23%	17%	13%	35%	
2006		21	39	36	17	39	152
		14%	26%	24%	11%	26%	
2011		8	30	24	14	38	114
		7%	26%	21%	12%	33%	
2001	Apprehending Criminals	13	59	23	7	39	141
		9%	42%	16%	5%	28%	
2006		18	71	25	9	28	151
		12%	48%	17%	6%	19%	
2011		8	43	25	4	31	111
		7%	39%	23%	4%	28%	

Section Four-Relationship

Year		Strongly Agree	Agree	Don't Know	Disagree	Strongly Disagree	Total
2001	Officers should spend more time w/groups/individuals to solve local problems	12	74	48	8	0	142
		8%	52%	34%	6%	0%	
2006		18	85	40	8	2	153
		12%	56%	26%	5%	1%	
2011		15	49	36	2	0	102
		15%	48%	35%	2%	0%	
2001	Officers should spend less time on minor law violations	14	29	37	49	11	140
		10%	21%	26%	35%	8%	
2006		10	43	36	51	12	152
		7%	28%	24%	33%	8%	
2011		18	33	30	19	6	106
		17%	31%	28%	18%	6%	
2001	Most citizens are interested in problems officers face	10	56	39	30	8	143
		7%	39%	27%	21%	6%	
2006		14	66	43	26	3	152
		9%	43%	28%	17%	2%	
2011		18	61	18	9	2	108
		17%	56%	17%	8%	2%	

Section Four-Relationship

		Strongly Agree	Agree	Don't Know	Disagree	Strongly Disagree	Total
2001	There are few personal ties between the officer and the community	6	40	52	37	6	141
		4%	28%	37%	26%	4%	
2006		3	25	54	55	15	152
		2%	16%	35%	36%	10%	
2011	Officers have Personal ties to Community	32	57	14	3	2	108
		25%	44%	11%	2%	2%	
2001	Officers seem content staying in their patrol cars rather than interacting with citizens	10	23	49	42	6	130
		8%	18%	38%	32%	5%	
2006		6	37	36	63	9	151
		4%	24%	24%	41%	6%	
2011		21	58	19	10	1	109
		19%	53%	17%	9%	1%	
2001	Officers are usually courteous and treat people with respect	38	51	18	6	1	114
		33%	45%	16%	5%	1%	
2006		34	91	16	9	2	152
		22%	59%	10%	6%	1%	
2011		24	57	23	6	2	112
		21%	51%	21%	5%	2%	

Section Four-Relationship

		Strongly Agree	Agree	Don't Know	Disagree	Strongly Disagree	Total
2001	Officers are usually honest	27	49	29	5	0	110
		25%	45%	26%	5%	0%	
2006		22	73	44	10	3	152
		14%	48%	29%	7%	2%	
2011		20	61	26	6	3	116
		17%	53%	22%	5%	3%	
2001	Officers are intimidating	11	21	37	57	9	135
		8%	16%	27%	42%	7%	
2006		3	35	21	77	16	152
		2%	23%	14%	50%	10%	
2011		9	30	37	28	8	112
		8%	27%	33%	25%	7%	
2001	Officers treat all citizens equally, according to the law	7	45	52	29	6	139
		5%	32%	37%	21%	4%	
2006		9	41	62	24	15	151
		6%	27%	41%	16%	10%	
2011		10	28	48	21	9	116
		9%	24%	41%	18%	8%	

Section Four-Relationship

		Strongly Agree	Agree	Don't Know	Disagree	Strongly Disagree	Total
2001	Officers show concern when asked questions	11	80	45	6	1	143
		8%	56%	31%	4%	1%	
2006		15	90	35	7	4	151
		10%	59%	23%	5%	3%	
2011		12	46	35	9	4	106
		11%	43%	33%	8%	4%	
2001	Officers treat young people with respect	8	55	49	18	9	139
		6%	40%	35%	13%	6%	
2006		17	55	51	19	10	152
		11%	36%	33%	12%	7%	
2011		11	38	38	15	3	105
		10%	36%	36%	14%	3%	
2001	I feel safe in my home	51	79	12	5	0	147
		35%	54%	8%	3%	0%	
2006		43	98	2	8	0	151
		28%	64%	1%	5%	0%	
2011		32	65	10	6	2	115
		28%	57%	9%	5%	2%	
2001	I feel safe walking alone in the community	47	75	13	7	3	145
		32%	52%	9%	5%	2%	
2006		35	96	2	18	1	152
		23%	63%	1%	12%	1%	
2011		27	61	12	8	3	111
		24%	55%	11%	7%	3%	

Comments Sections

2011 32 responses

Two most important Public Safety Problems

Drugs/Alcohol

Traffic/Bikes

Youth/Parenting

Deer

Suggestions to enhance feelings of safety

Increase visibility/presence - by far number 1

Sidewalks/bike paths

Illegal immigration

Traffic Enforcement

2006 – 106 responses

- Drugs/Alcohol - DUI
- Traffic
- Youth – Lack of Activities Leads to Bad Behavior
- Lack of Presence – Visibility
- Influx of Immigrants