



September 2011 Taxes, Remitted in October 2011 Sales, Use, and Accommodation Tax Report

This City of Steamboat Springs Sales, Use, and Accommodation Tax Report examines tax collections for the month of September 2011, which were remitted to the City in October 2011.

Sales Tax

September 2011 sales tax collections increased by 5.18% from sales tax collections for the month of September 2010.

Year-to-date total sales tax collections are 4.01% higher than those of 2010 year-to-date.

Sales Tax September 2011	Sales Tax September 2010	% increase/decrease over last year
\$1,299,017	\$1,235,021	5.18%

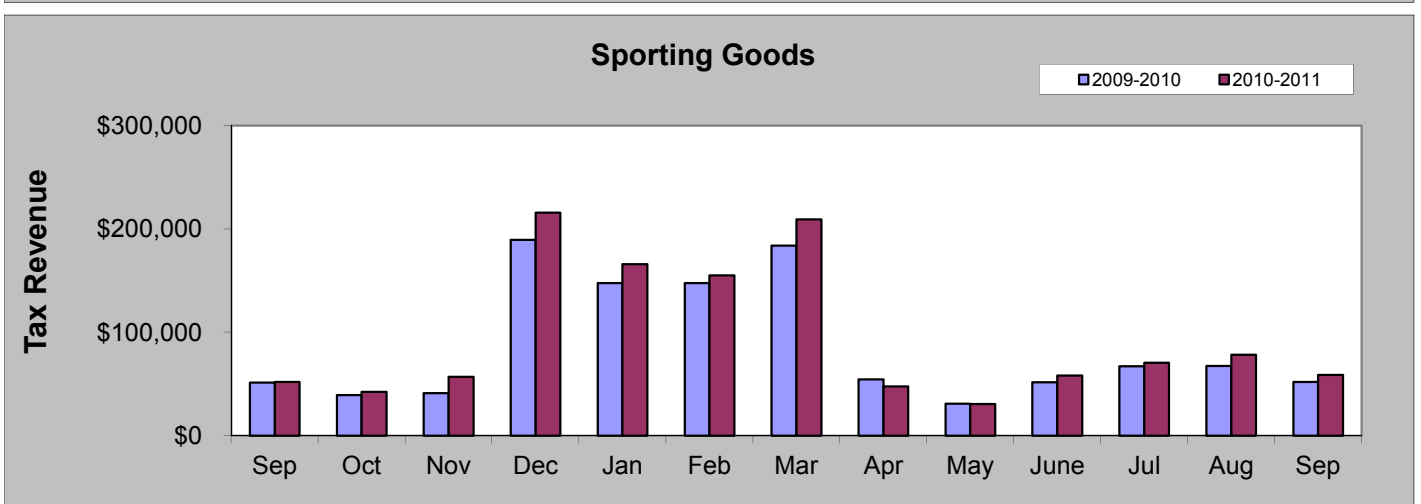
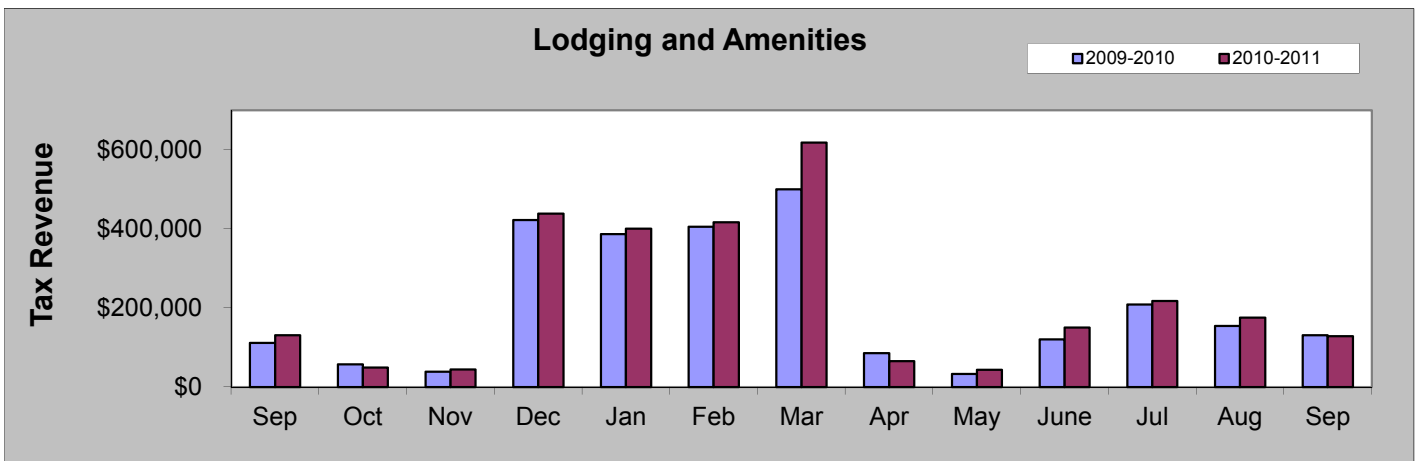
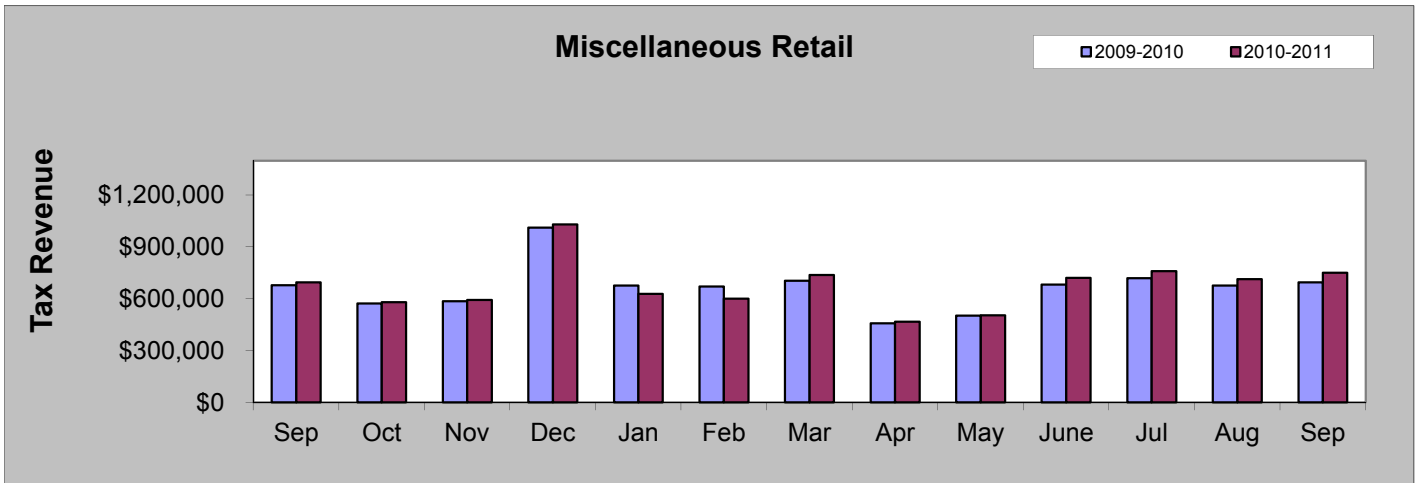
Sales Tax 2011 YTD	Sales Tax 2010 YTD	% increase/decrease over Year to Date
\$12,926,078	\$12,427,719	4.01%

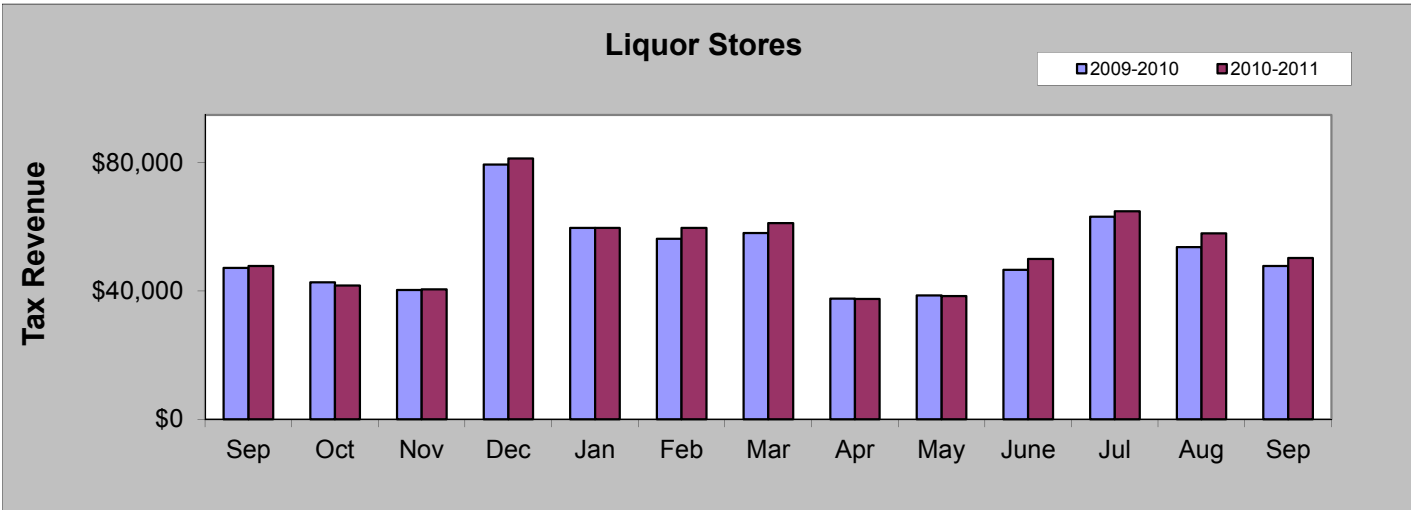
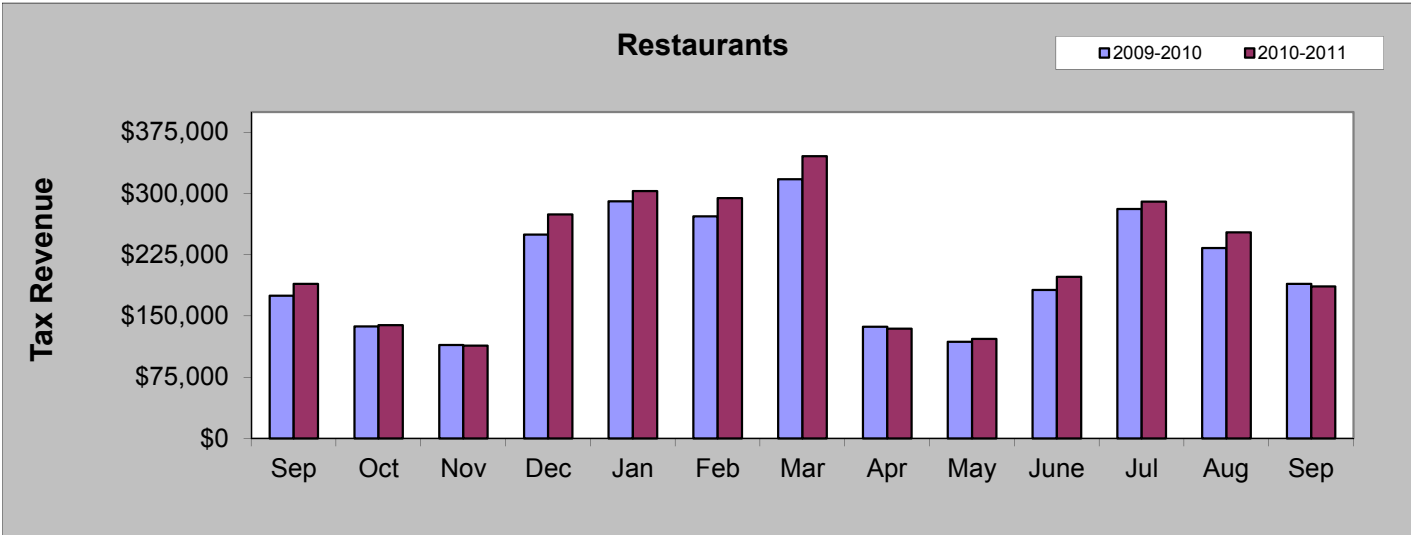
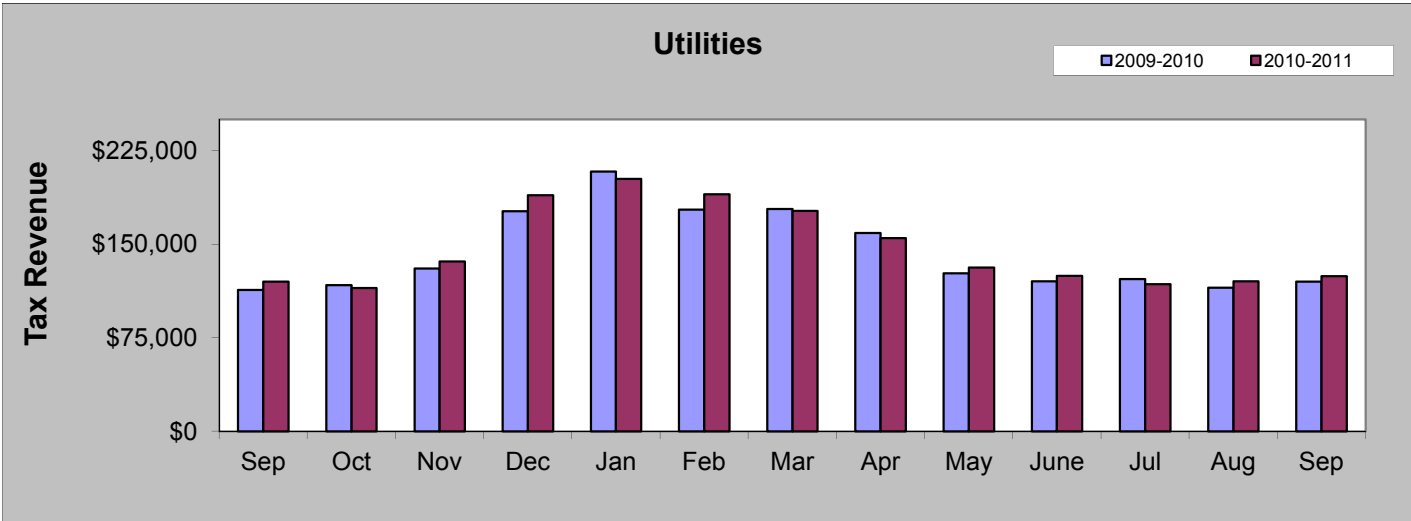
September 2011 Sales Categories



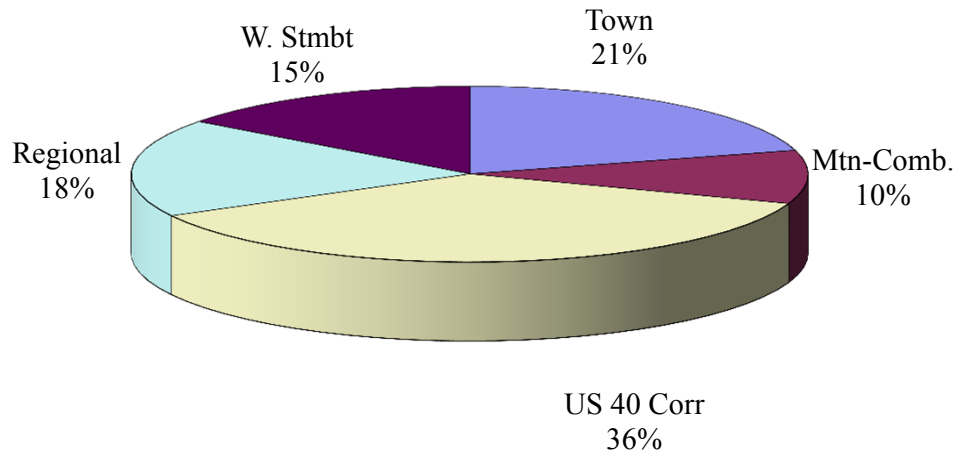
SEPTEMBER COMPARISON BY CATEGORY

	2010	2011	%
Miscellaneous Retail	\$694,717	\$750,550	8.04%
Lodging and Amenities	\$130,819	\$128,633	-1.67%
Sporting Goods	\$52,033	\$58,785	12.98%
Utilities	\$120,071	\$124,444	3.64%
Restaurants	\$189,549	\$186,270	-1.73%
Liquor Stores	\$47,831	\$50,337	5.24%

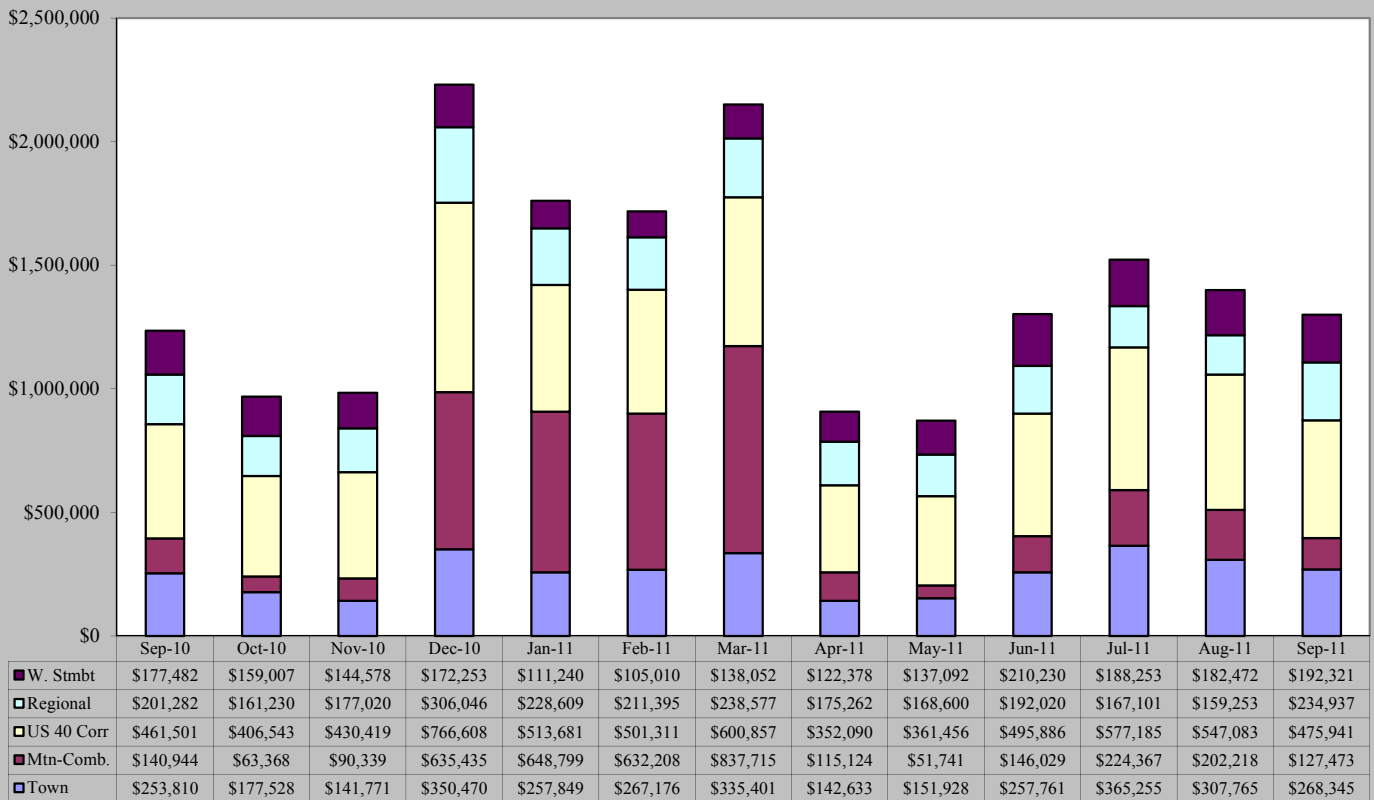




September 2011 Sales Tax By Area

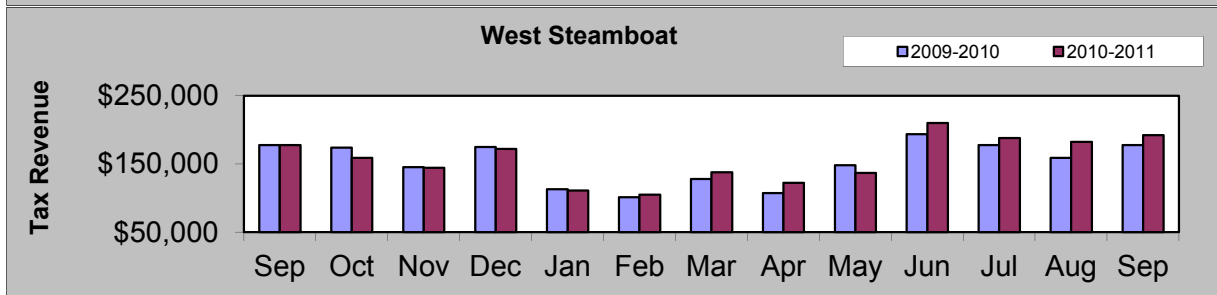
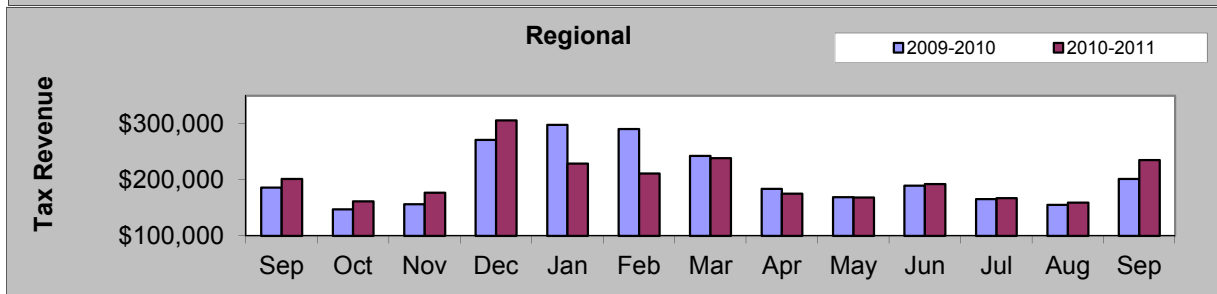
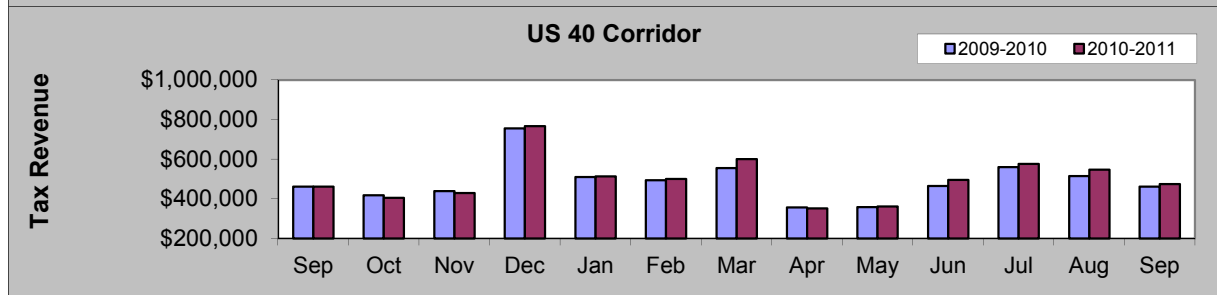
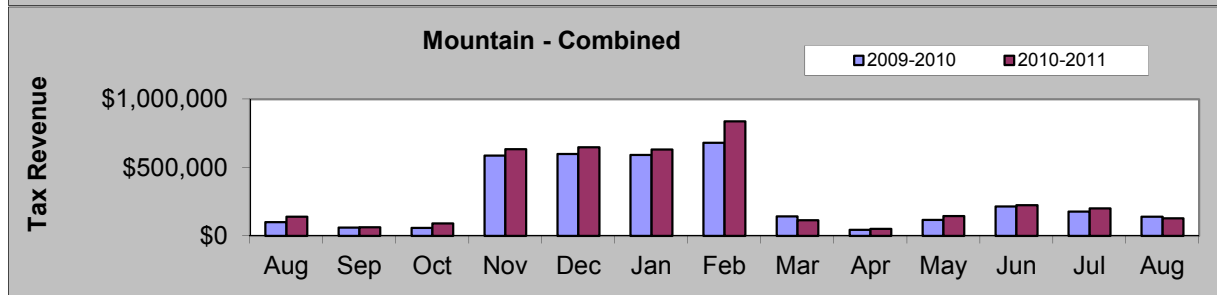
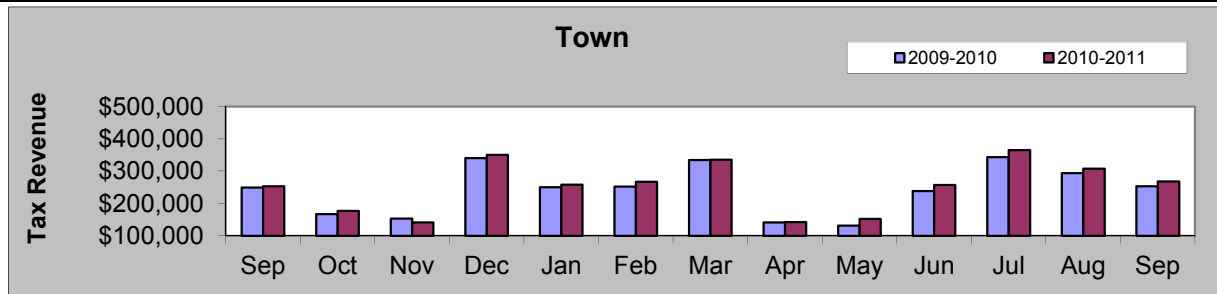


September 2010 - September 2011



SEPTEMBER COMPARISON BY AREA

Area	2010	2011	%
Town	\$253,810	\$268,345	5.73%
Mountain - Combined	\$140,944	\$127,473	-9.56%
US 40 Corridor	\$461,501	\$475,941	3.13%
Regional	\$201,282	\$234,937	16.72%
West Steamboat	\$177,482	\$192,321	8.36%



Building Use Tax

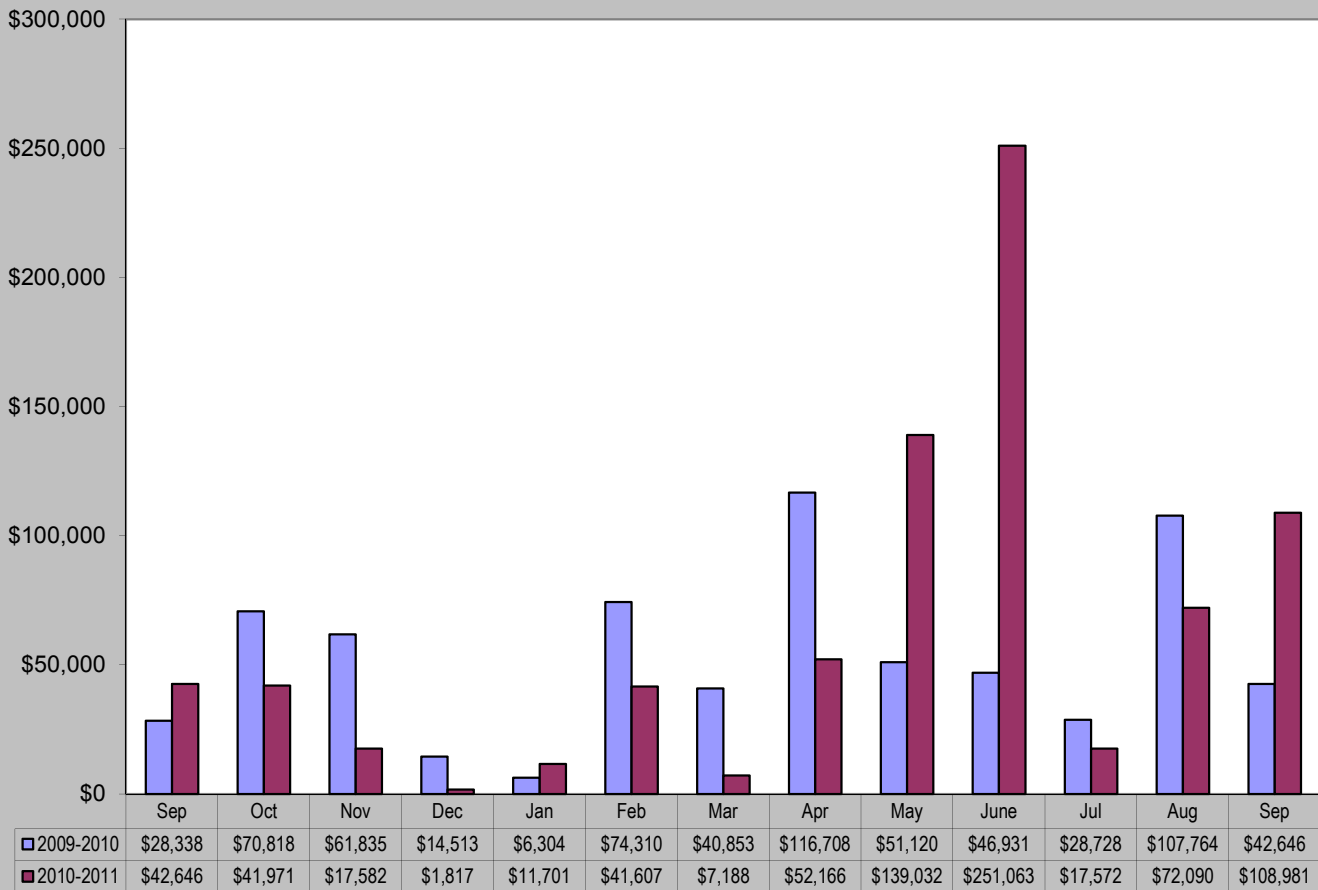
September 2011 Building Use Tax collections increased 155.55% from September 2010.

Year-to-date building use tax collections increased 36.10%.

September 2011	September 2010	% increase/decrease
Building Use Tax	Building Use Tax	
\$108,981	\$42,646	155.55%

Building Use Tax	Building Use Tax	% increase/decrease
2011 YTD	2010 YTD	
\$701,399	\$515,364	36.10%

Building Use Tax - 2009/2010 vs. 2010/2011



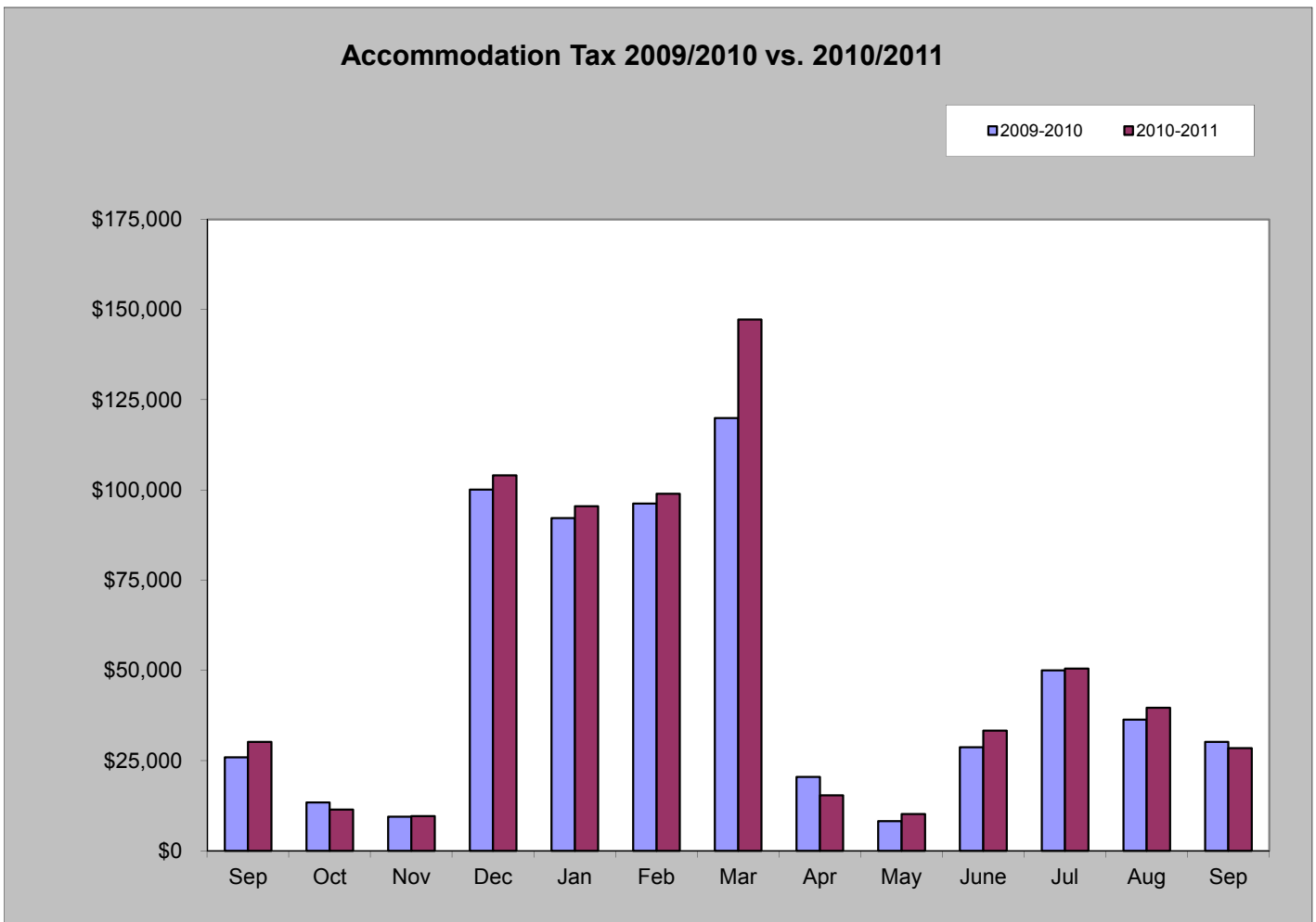
Accommodation Tax

September 2011 accommodation tax decreased 5.92% from September 2010.

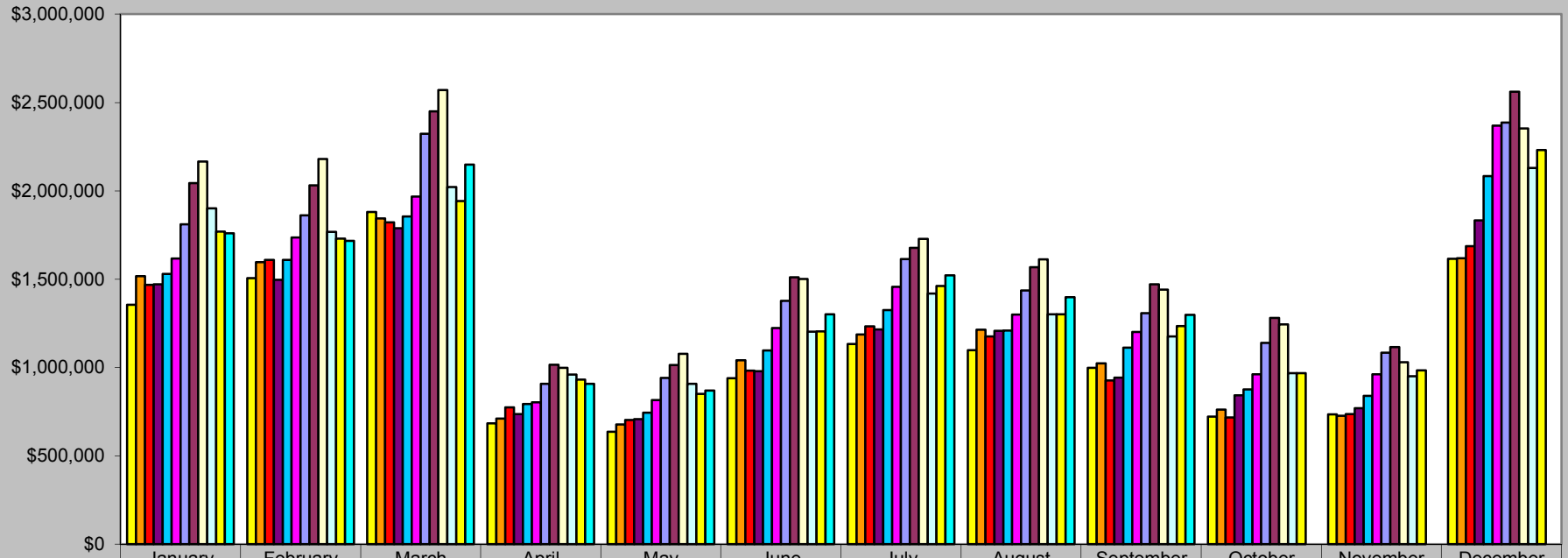
Year-to-date accommodation tax increased 7.65%.

September 2011	September 2010	% increase/decrease
Accommodation Tax	Accommodation Tax	
\$28,456	\$30,245	-5.92%

Accommodation Tax	Accommodation Tax	% increase/decrease
2011 YTD	2010 YTD	
\$519,564	\$482,659	7.65%



Historical Sales Tax Data Sales Tax Totals - 2000 to 2011



	January	February	March	April	May	June	July	August	September	October	November	December
2000	\$1,355,249	\$1,505,684	\$1,879,789	\$684,244	\$637,578	\$939,481	\$1,133,251	\$1,098,829	\$998,420	\$722,617	\$734,644	\$1,615,197
2001	\$1,517,372	\$1,596,296	\$1,844,737	\$712,155	\$678,521	\$1,040,995	\$1,186,620	\$1,214,665	\$1,023,255	\$762,275	\$726,706	\$1,618,152
2002	\$1,468,242	\$1,609,764	\$1,822,635	\$774,194	\$704,180	\$983,142	\$1,233,685	\$1,175,569	\$927,496	\$718,049	\$736,818	\$1,687,509
2003	\$1,471,061	\$1,497,398	\$1,787,877	\$737,255	\$708,947	\$979,861	\$1,215,159	\$1,207,373	\$942,596	\$842,980	\$770,632	\$1,833,614
2004	\$1,530,388	\$1,609,507	\$1,855,895	\$793,619	\$744,456	\$1,097,619	\$1,325,813	\$1,209,657	\$1,112,747	\$875,854	\$839,590	\$2,083,871
2005	\$1,617,152	\$1,735,422	\$1,968,239	\$803,359	\$815,925	\$1,223,263	\$1,457,514	\$1,299,302	\$1,201,406	\$962,731	\$961,551	\$2,369,566
2006	\$1,811,413	\$1,861,558	\$2,322,443	\$908,584	\$941,595	\$1,377,269	\$1,614,695	\$1,436,115	\$1,307,845	\$1,139,648	\$1,084,858	\$2,386,275
2007	\$2,044,667	\$2,032,045	\$2,450,620	\$1,016,601	\$1,015,101	\$1,510,706	\$1,676,821	\$1,567,534	\$1,470,714	\$1,281,546	\$1,115,446	\$2,561,705
2008	\$2,166,093	\$2,180,532	\$2,570,347	\$999,144	\$1,077,244	\$1,500,946	\$1,728,329	\$1,612,531	\$1,440,373	\$1,244,023	\$1,030,654	\$2,354,077
2009	\$1,900,660	\$1,767,622	\$2,022,205	\$960,333	\$908,729	\$1,203,304	\$1,419,472	\$1,301,838	\$1,176,374	\$967,698	\$951,706	\$2,130,350
2010	\$1,770,224	\$1,729,871	\$1,942,205	\$931,441	\$851,388	\$1,204,170	\$1,462,498	\$1,300,901	\$1,235,021	\$967,676	\$984,127	\$2,230,813
2011	\$1,760,177	\$1,717,100	\$2,148,601	\$907,486	\$870,818	\$1,301,926	\$1,522,161	\$1,398,792	\$1,299,017			