

## November 2011 Taxes, Remitted in December 2011 Sales, Use, and Accommodation Tax Report

This City of Steamboat Springs Sales, Use, and Accommodation Tax Report examines tax collections for the month of November 2011, which were remitted to the City in December 2011.

### Sales Tax

November 2011 sales tax collections increased by 5.07% from sales tax collections for the month of November '10. Year-to-date total sales tax collections are 4.19% higher than those of 2010 year-to-date.

Sales Tax November 2011	Sales Tax November 2010	% increase/decrease over last year
\$1,034,030	\$984,127	5.07%

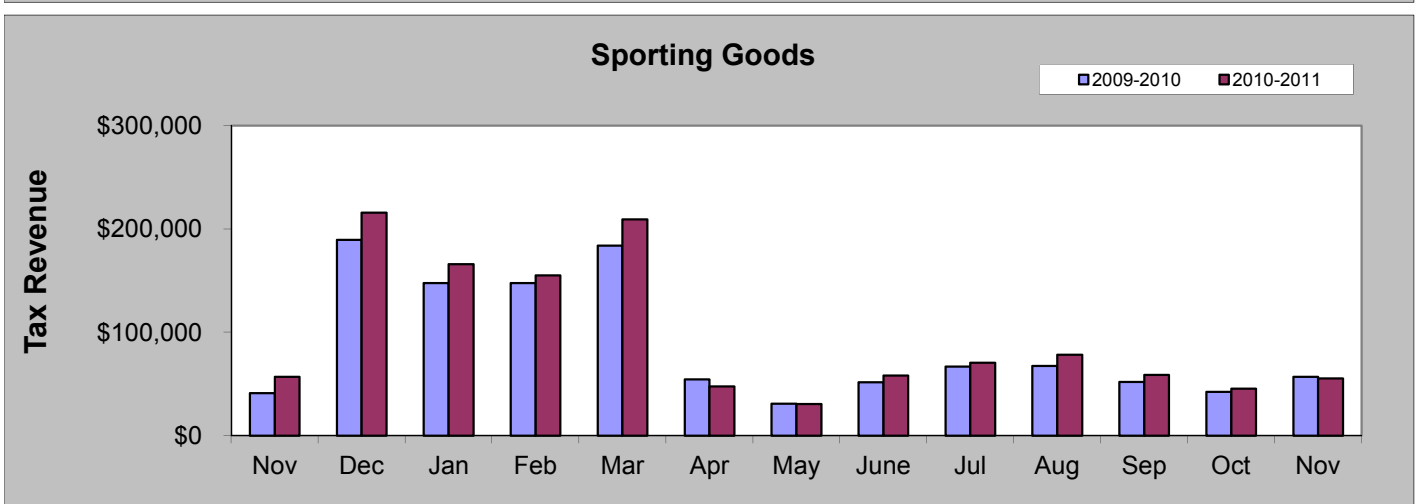
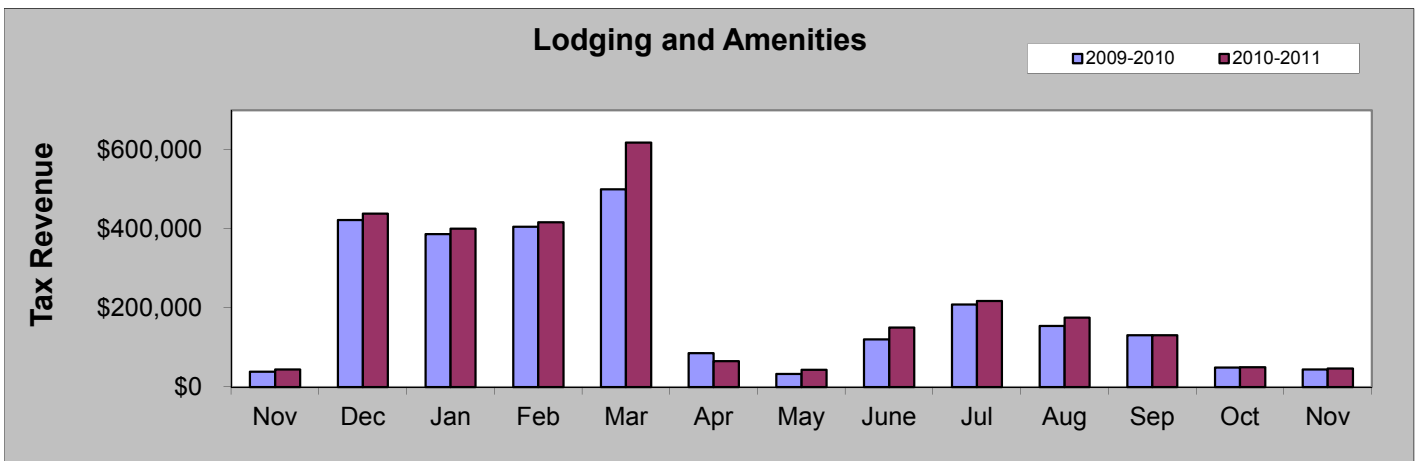
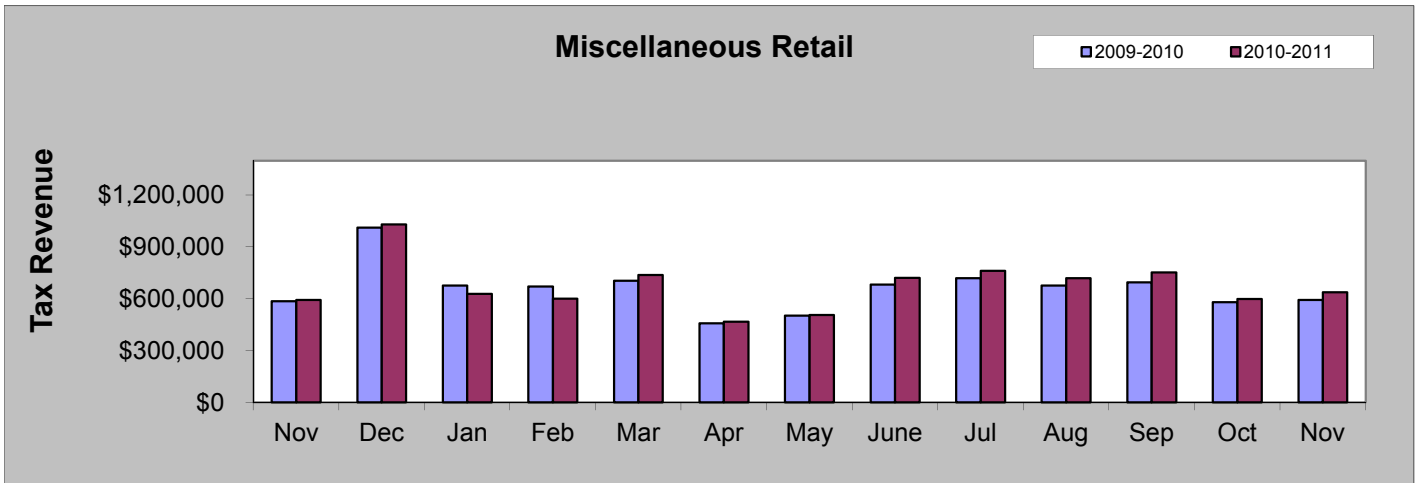
Sales Tax 2011 YTD	Sales Tax 2010 YTD	% increase/decrease over Year to Date
\$14,982,251	\$14,379,537	4.19%

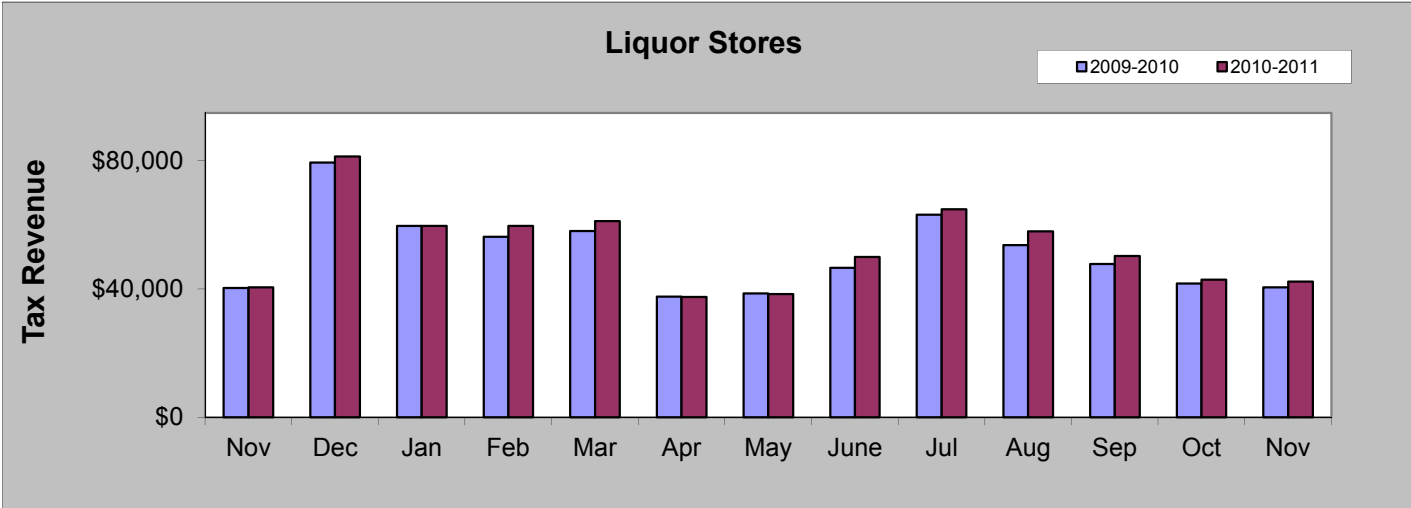
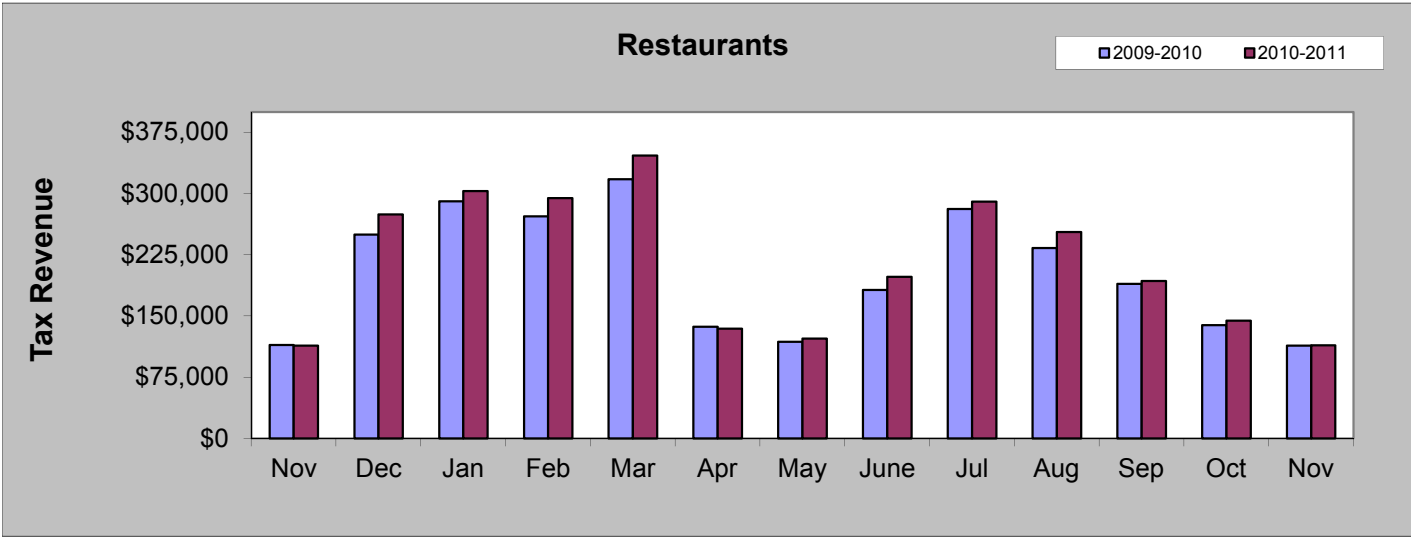
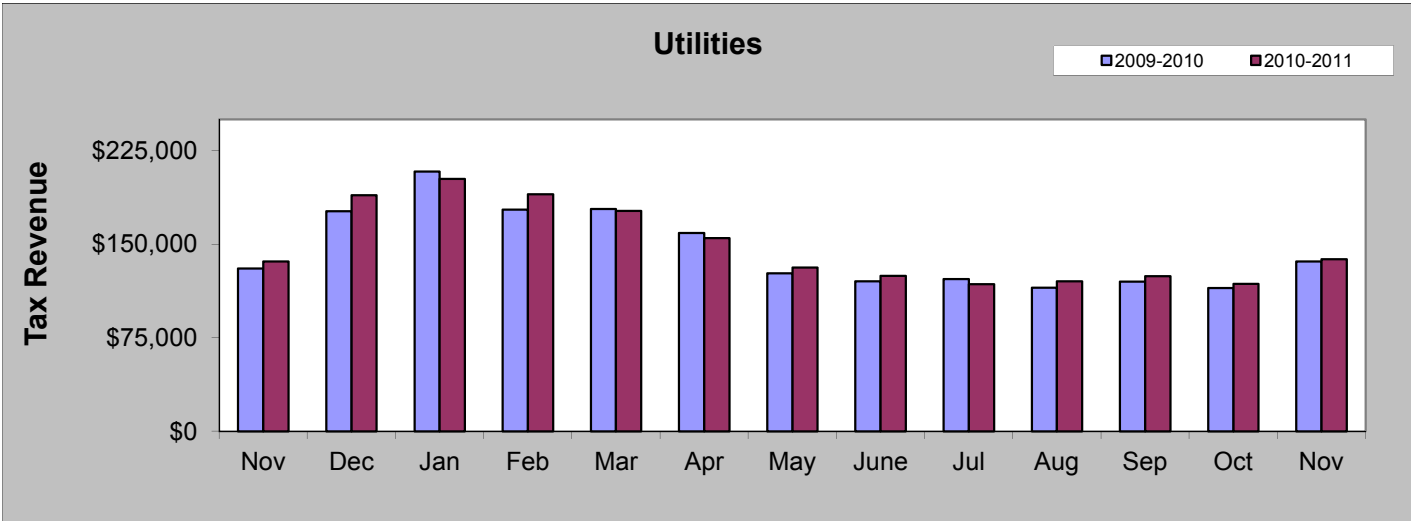
**November 2011 Sales Categories**



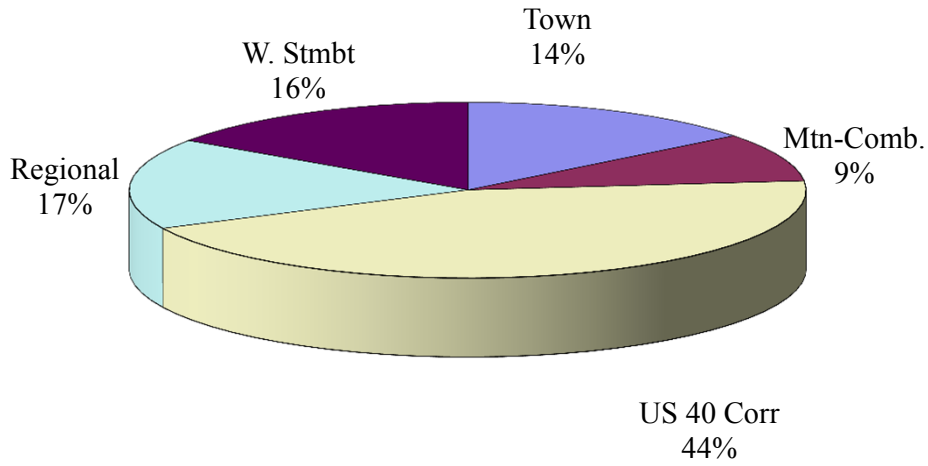
## NOVEMBER COMPARISON BY CATEGORY

	2010	2011	%
Miscellaneous Retail	\$592,794	\$637,999	7.63%
Lodging and Amenities	\$44,086	\$46,322	5.07%
Sporting Goods	\$56,891	\$55,301	-2.79%
Utilities	\$136,033	\$137,928	1.39%
Restaurants	\$113,715	\$114,092	0.33%
Liquor Stores	\$40,607	\$42,388	4.39%

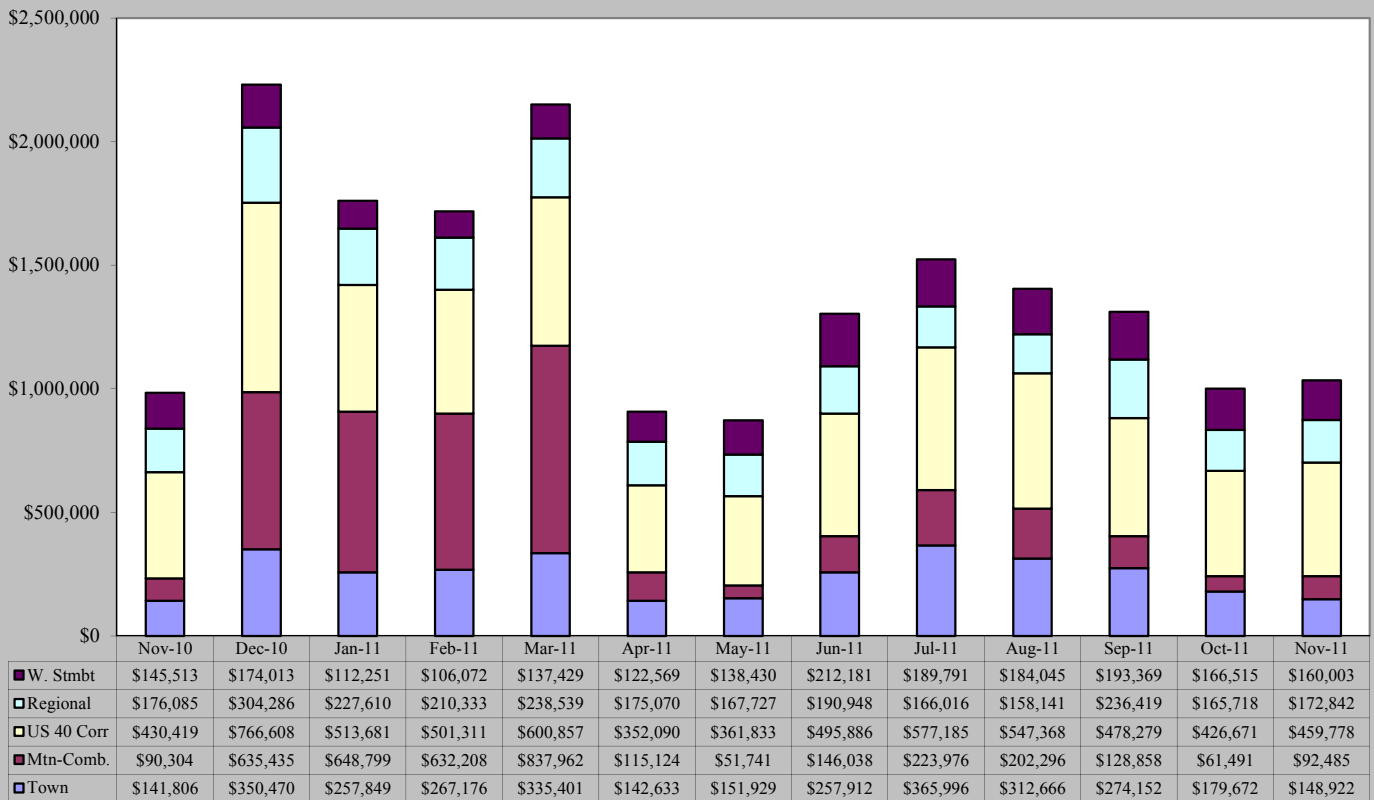




## November 2011 Sales Tax By Area

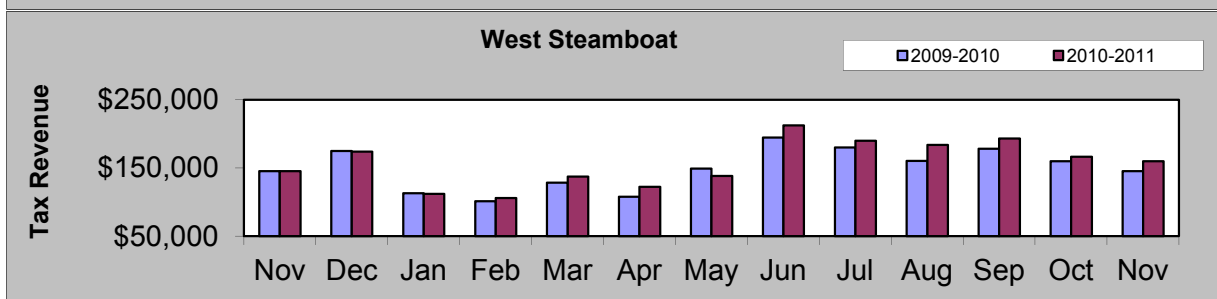
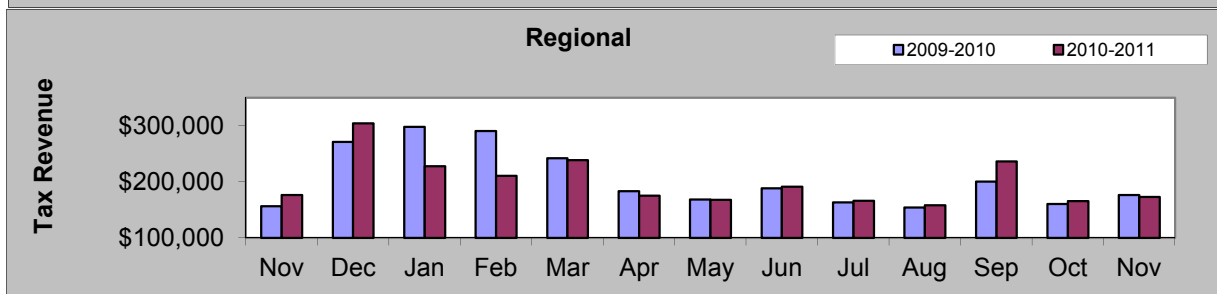
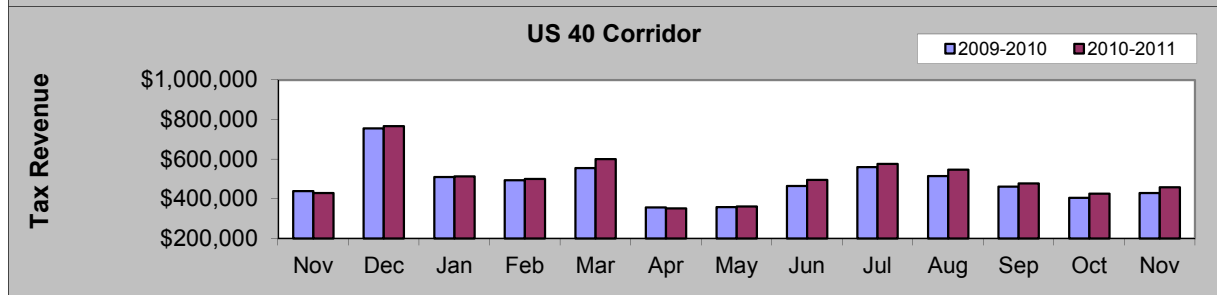
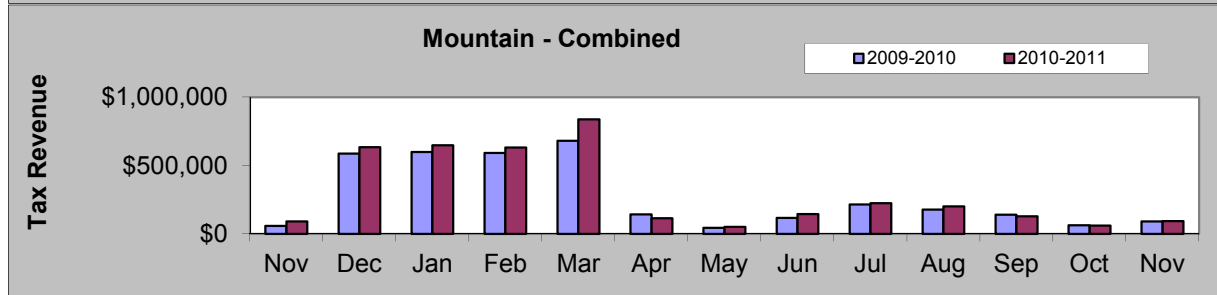
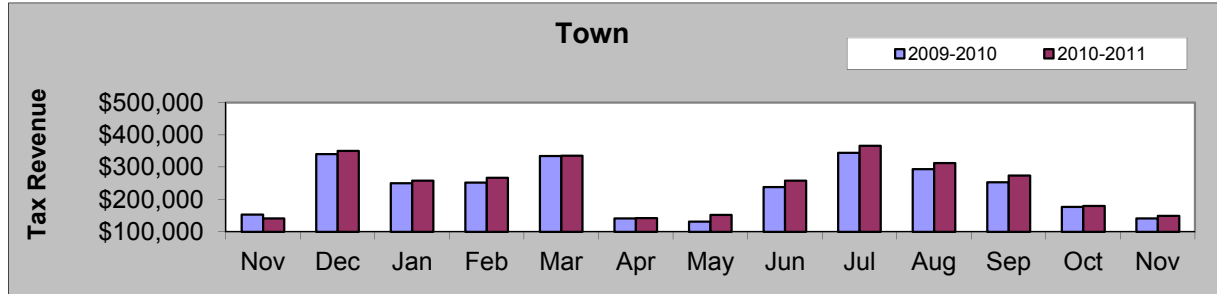


## November 2010 - November 2011



### NOVEMBER COMPARISON BY AREA

Area	2010	2011	%
<b>Town</b>	\$141,806	\$148,922	5.02%
<b>Mountain - Combined</b>	\$90,339	\$92,485	2.38%
<b>US 40 Corridor</b>	\$430,419	\$459,778	6.82%
<b>Regional</b>	\$176,085	\$172,842	-1.84%
<b>West Steamboat</b>	\$145,513	\$160,003	9.96%



# Building Use Tax

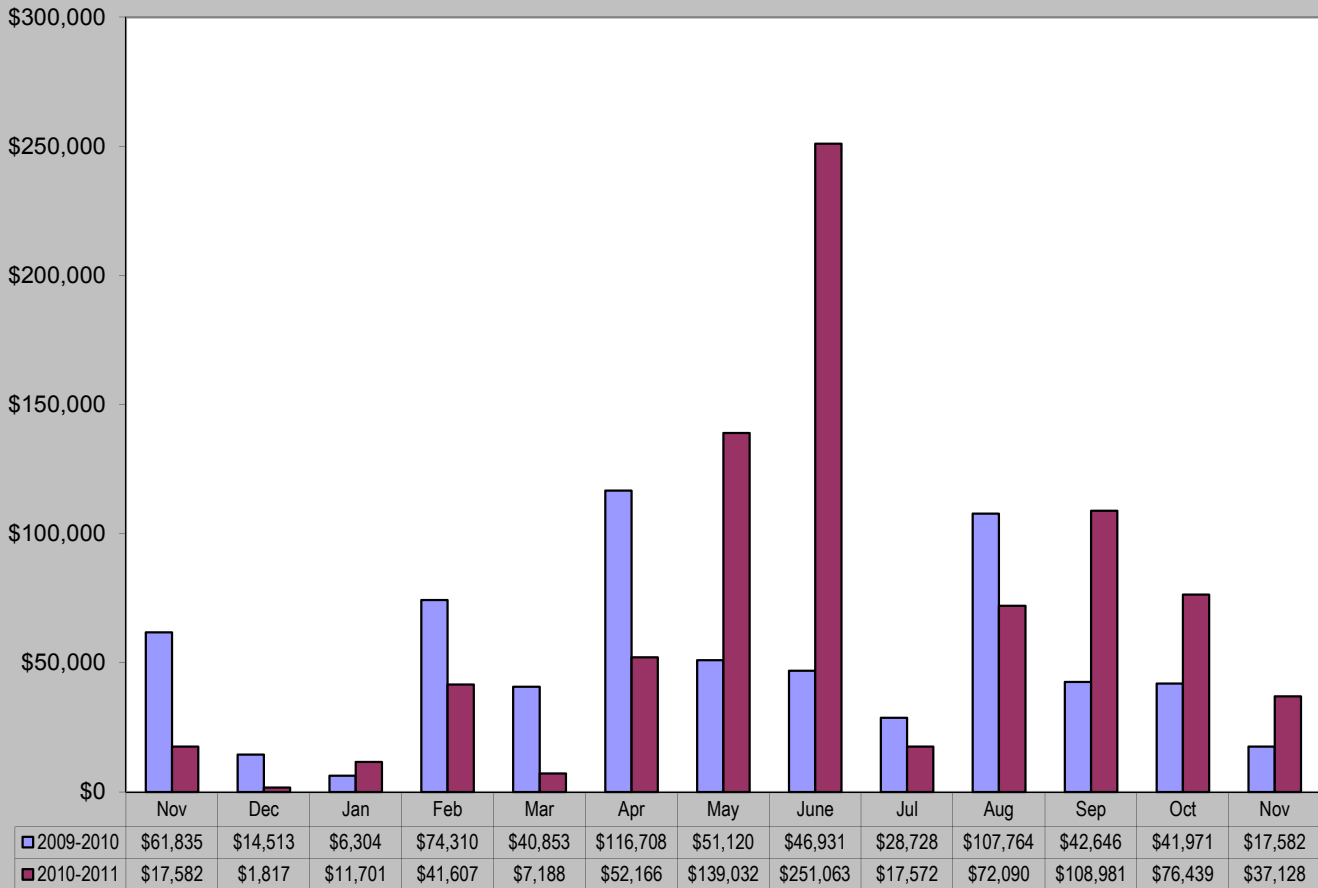
November 2011 Building Use Tax collections increased 111.17% from November 2010.

Year-to-date building use tax collections increased 41.27%.

November 2011	November 2010	% increase/decrease
<b>Building Use Tax</b>	<b>Building Use Tax</b>	
\$37,128	\$17,582	111.17%

Building Use Tax	Building Use Tax	% increase/decrease
<b>2011 YTD</b>	<b>2010 YTD</b>	
\$803,266	\$568,613	41.27%

## Building Use Tax - 2009/2010 vs. 2010/2011



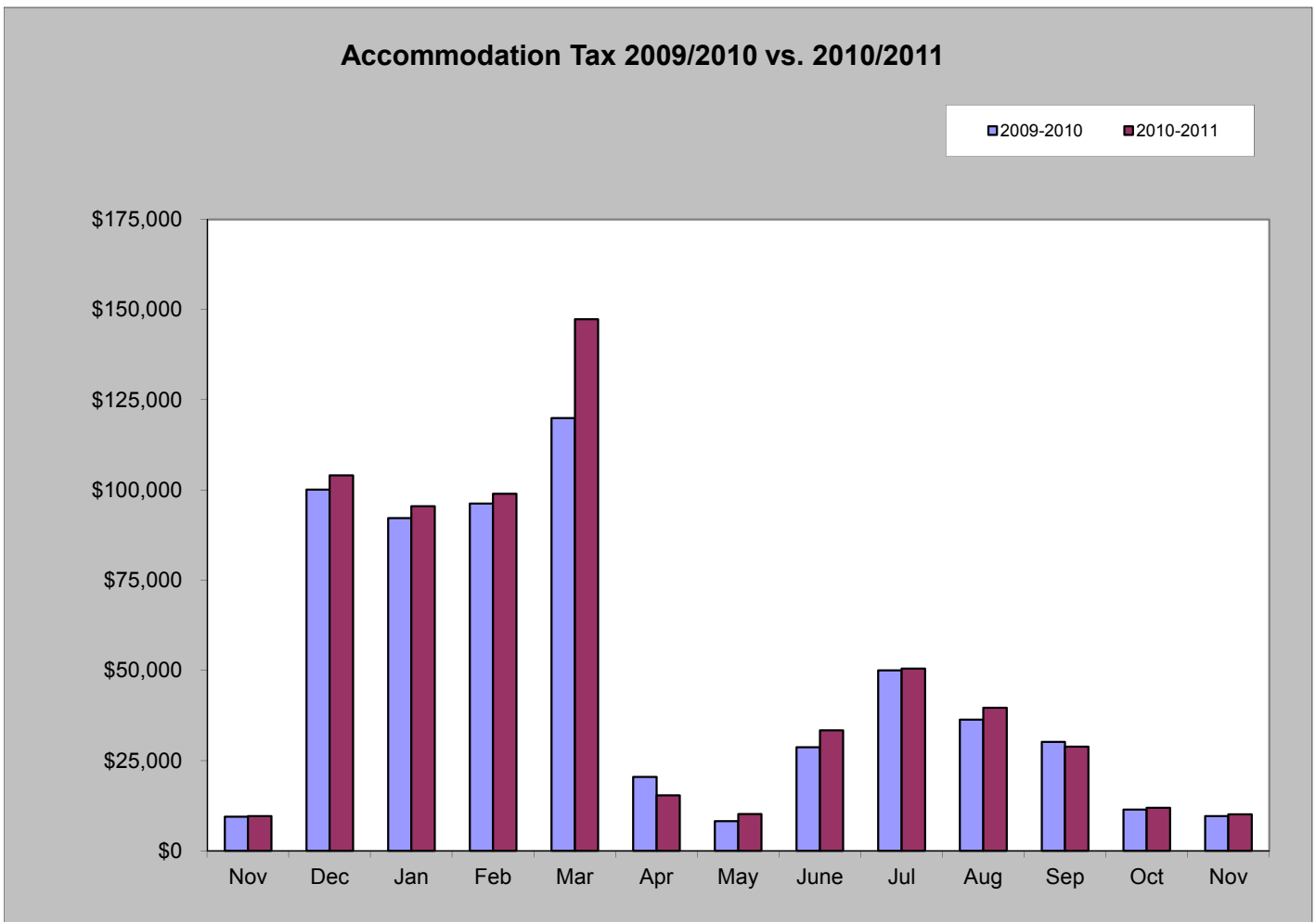
# Accommodation Tax

November 2011 accommodation tax increased 4.59% from November 2010.

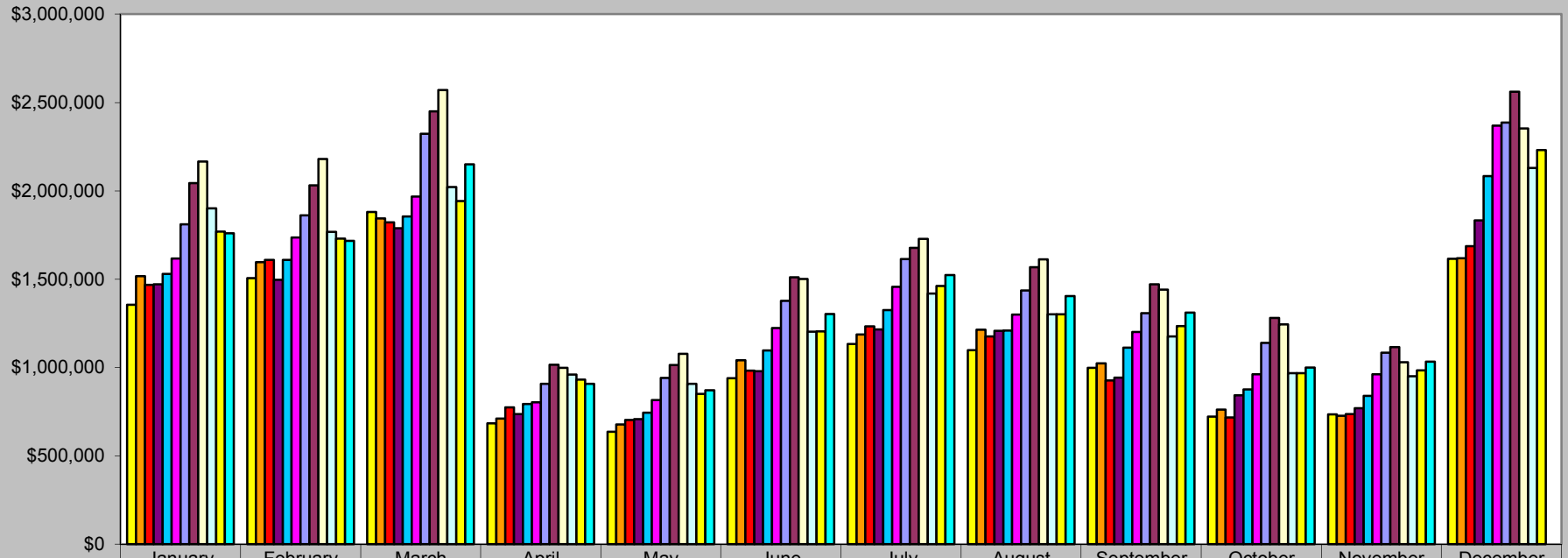
Year-to-date accommodation tax increased 7.62%.

November 2011	November 2010	% increase/decrease
<b>Accommodation Tax</b>	<b>Accommodation Tax</b>	
\$10,117	\$9,673	4.59%

Accommodation Tax	Accommodation Tax	% increase/decrease
<b>2011 YTD</b>	<b>2010 YTD</b>	
\$542,205	\$503,802	7.62%



## Historical Sales Tax Data Sales Tax Totals - 2000 to 2011



	January	February	March	April	May	June	July	August	September	October	November	December
2000	\$1,355,249	\$1,505,684	\$1,879,789	\$684,244	\$637,578	\$939,481	\$1,133,251	\$1,098,829	\$998,420	\$722,617	\$734,644	\$1,615,197
2001	\$1,517,372	\$1,596,296	\$1,844,737	\$712,155	\$678,521	\$1,040,995	\$1,186,620	\$1,214,665	\$1,023,255	\$762,275	\$726,706	\$1,618,152
2002	\$1,468,242	\$1,609,764	\$1,822,635	\$774,194	\$704,180	\$983,142	\$1,233,685	\$1,175,569	\$927,496	\$718,049	\$736,818	\$1,687,509
2003	\$1,471,061	\$1,497,398	\$1,787,877	\$737,255	\$708,947	\$979,861	\$1,215,159	\$1,207,373	\$942,596	\$842,980	\$770,632	\$1,833,614
2004	\$1,530,388	\$1,609,507	\$1,855,895	\$793,619	\$744,456	\$1,097,619	\$1,325,813	\$1,209,657	\$1,112,747	\$875,854	\$839,590	\$2,083,871
2005	\$1,617,152	\$1,735,422	\$1,968,239	\$803,359	\$815,925	\$1,223,263	\$1,457,514	\$1,299,302	\$1,201,406	\$962,731	\$961,551	\$2,369,566
2006	\$1,811,413	\$1,861,558	\$2,322,443	\$908,584	\$941,595	\$1,377,269	\$1,614,695	\$1,436,115	\$1,307,845	\$1,139,648	\$1,084,858	\$2,386,275
2007	\$2,044,667	\$2,032,045	\$2,450,620	\$1,016,601	\$1,015,101	\$1,510,706	\$1,676,821	\$1,567,534	\$1,470,714	\$1,281,546	\$1,115,446	\$2,561,705
2008	\$2,166,093	\$2,180,532	\$2,570,347	\$999,144	\$1,077,244	\$1,500,946	\$1,728,329	\$1,612,531	\$1,440,373	\$1,244,023	\$1,030,654	\$2,354,077
2009	\$1,900,660	\$1,767,622	\$2,022,205	\$960,333	\$908,729	\$1,203,304	\$1,419,472	\$1,301,838	\$1,176,374	\$967,698	\$951,706	\$2,130,350
2010	\$1,770,224	\$1,729,871	\$1,942,205	\$931,441	\$851,388	\$1,204,185	\$1,462,498	\$1,300,901	\$1,235,021	\$967,676	\$984,127	\$2,230,813
2011	\$1,760,189	\$1,717,100	\$2,149,927	\$907,486	\$871,659	\$1,302,965	\$1,522,964	\$1,404,786	\$1,311,078	\$1,000,067	\$1,034,030	