



December 2011 Taxes, Remitted in January 2012 Sales, Use, and Accommodation Tax Report

This City of Steamboat Springs Sales, Use, and Accommodation Tax Report examines tax collections for the month of December 2011, which were remitted to the City in January 2012.

Sales Tax

December 2011 sales tax collections increased by 3.69% from sales tax collections for the month of December '10. Year-to-date total sales tax collections are 4.38% higher than those of 2010 year-to-date.

Sales Tax December 2011	Sales Tax December 2010	% increase/decrease over last year
\$2,313,474	\$2,231,190	3.69%

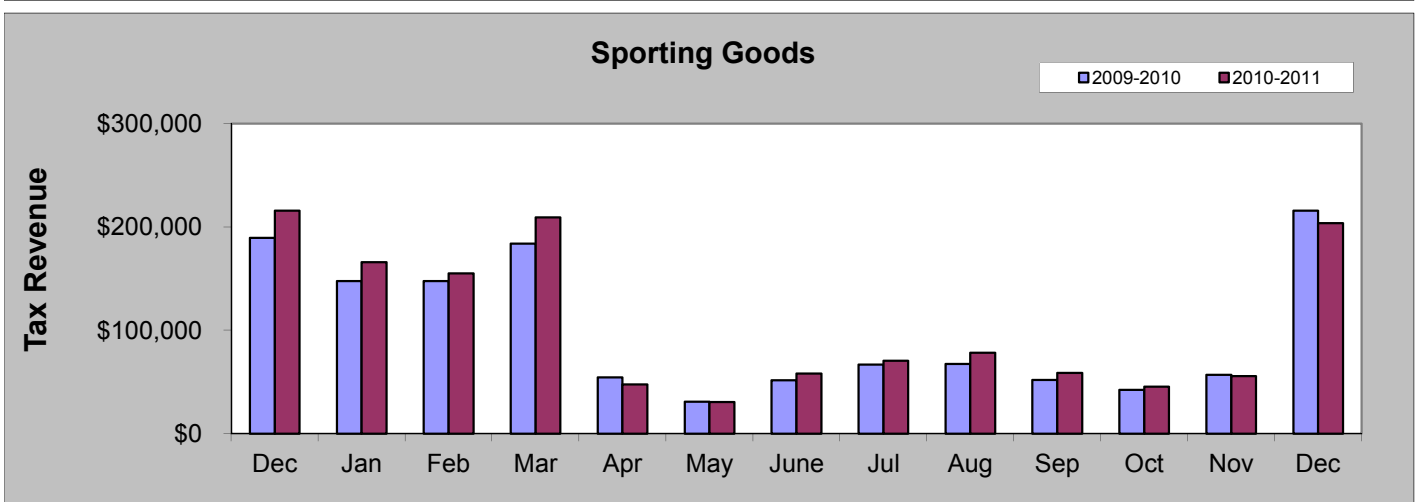
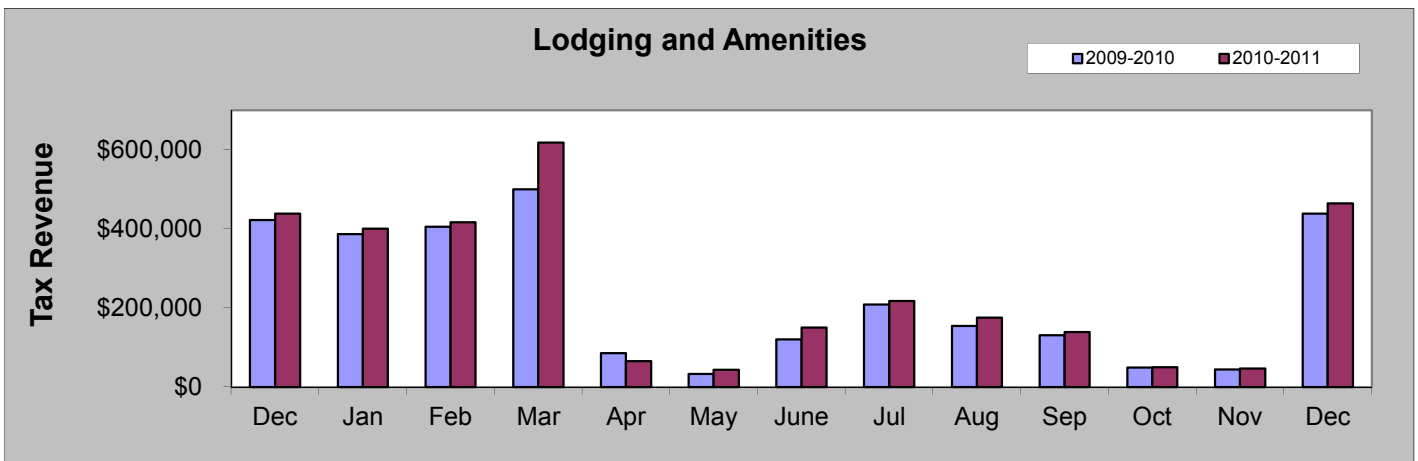
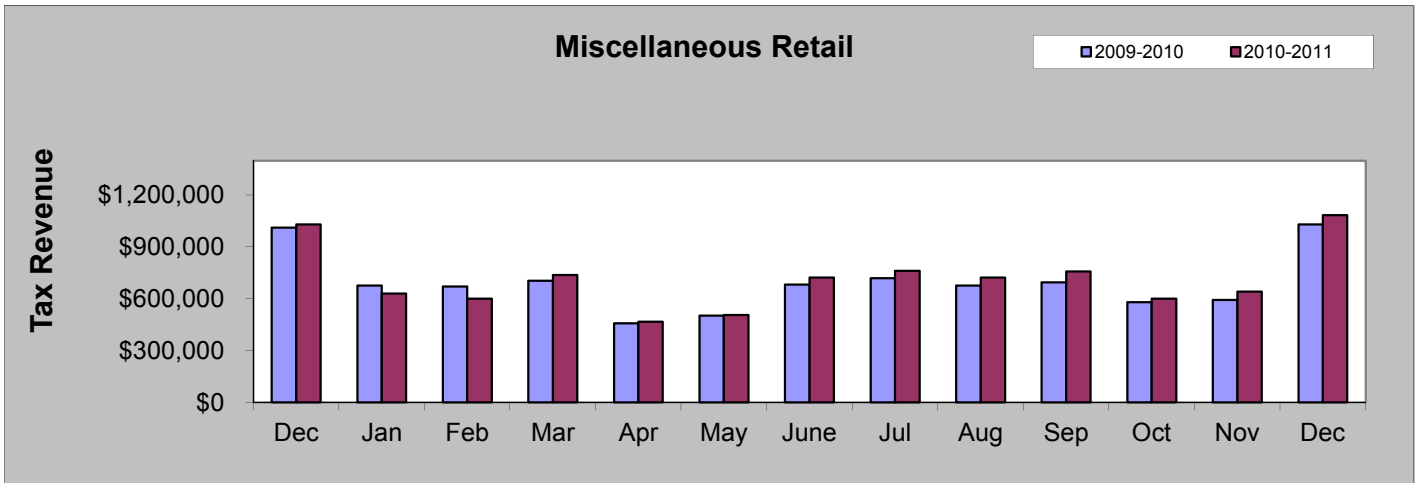
Sales Tax 2011 YTD	Sales Tax 2010 YTD	% increase/decrease over Year to Date
\$17,339,466	\$16,612,266	4.38%

December 2011 Sales Categories

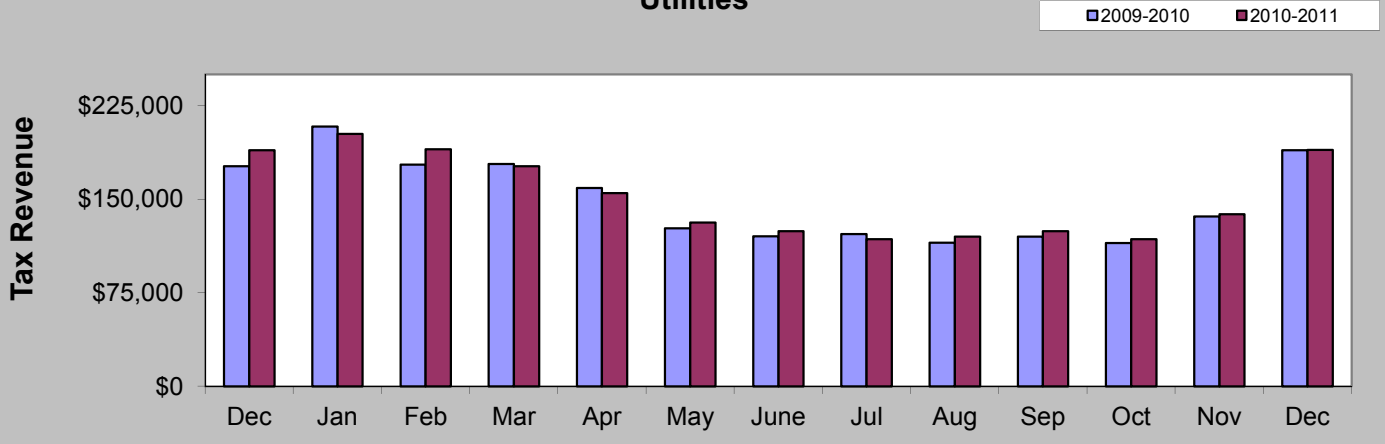


DECEMBER COMPARISON BY CATEGORY

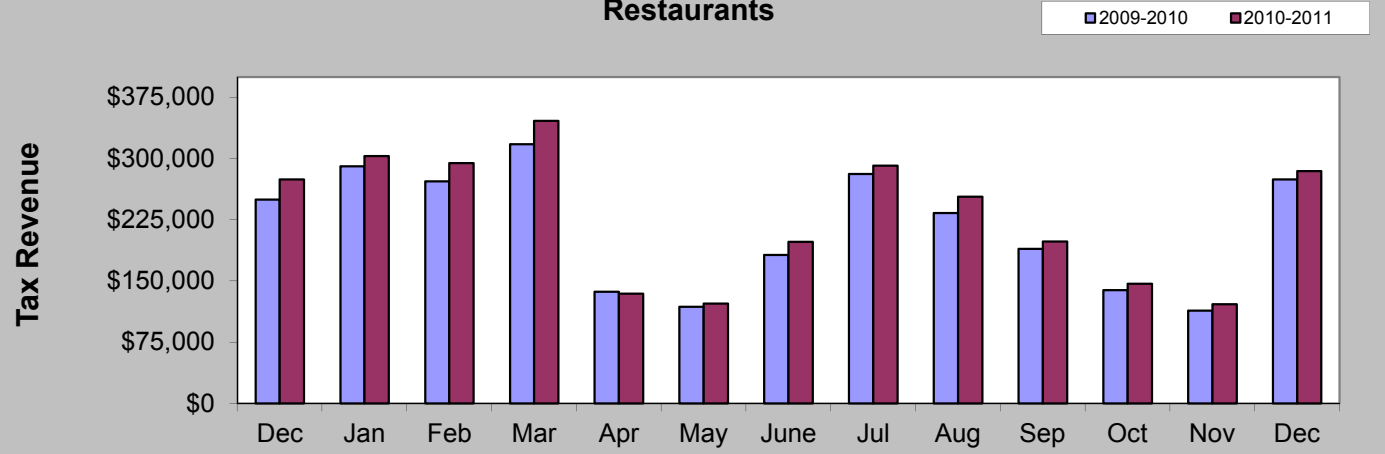
	2010	2011	%
Miscellaneous Retail	\$1,031,826	\$1,084,236	5.08%
Lodging and Amenities	\$438,217	\$463,916	5.86%
Sporting Goods	\$215,855	\$203,707	-5.63%
Utilities	\$189,368	\$189,553	0.10%
Restaurants	\$274,504	\$284,907	3.79%
Liquor Stores	\$81,421	\$87,156	7.04%



Utilities



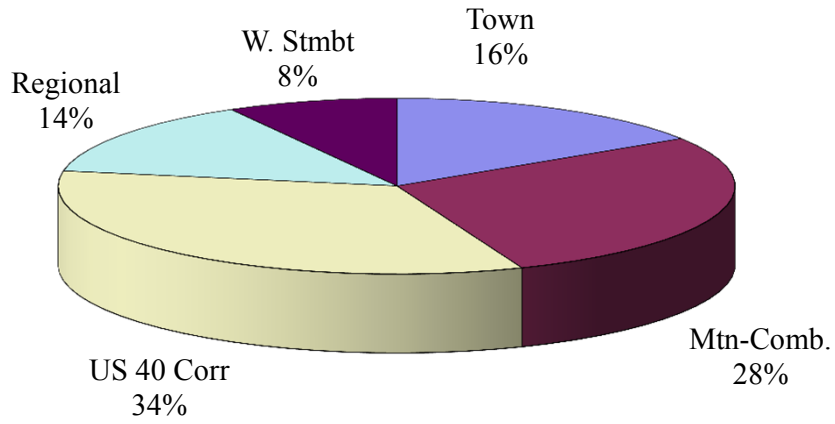
Restaurants



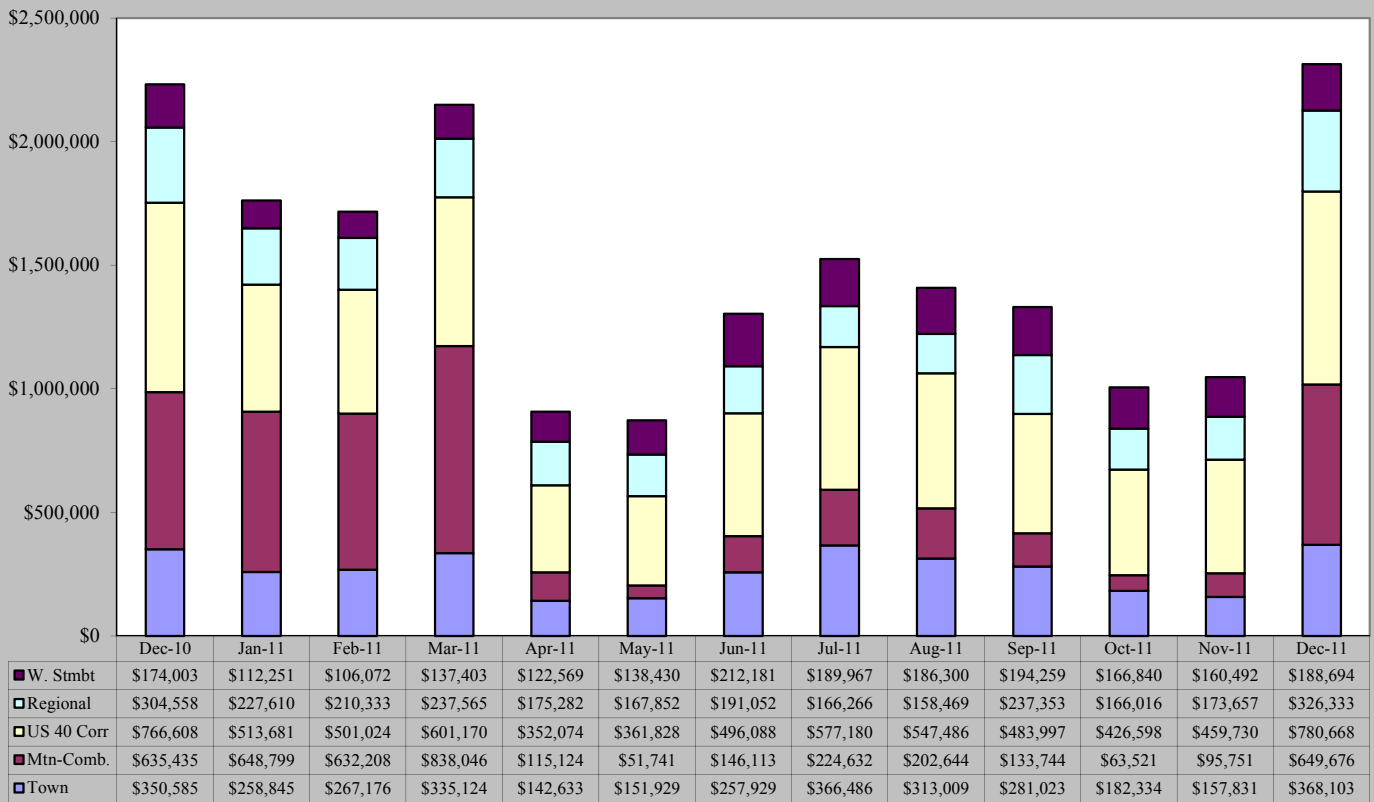
Liquor Stores



December 2011 Sales Tax By Area

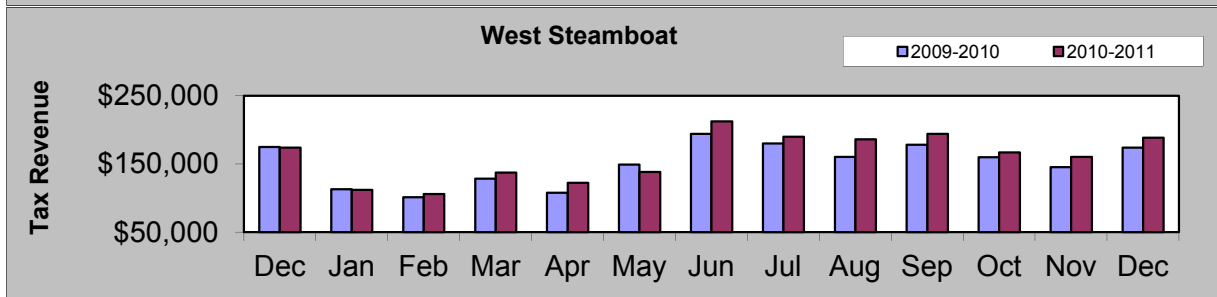
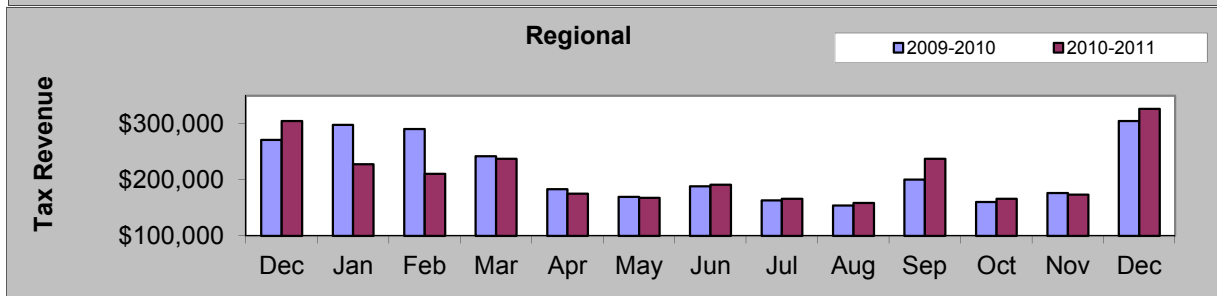
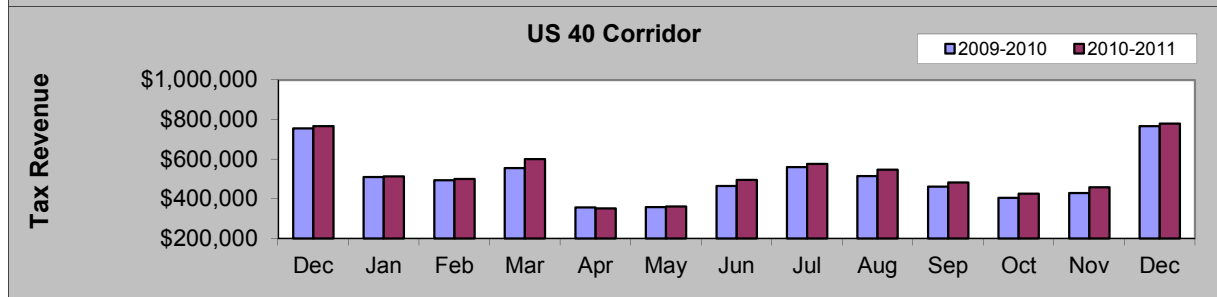
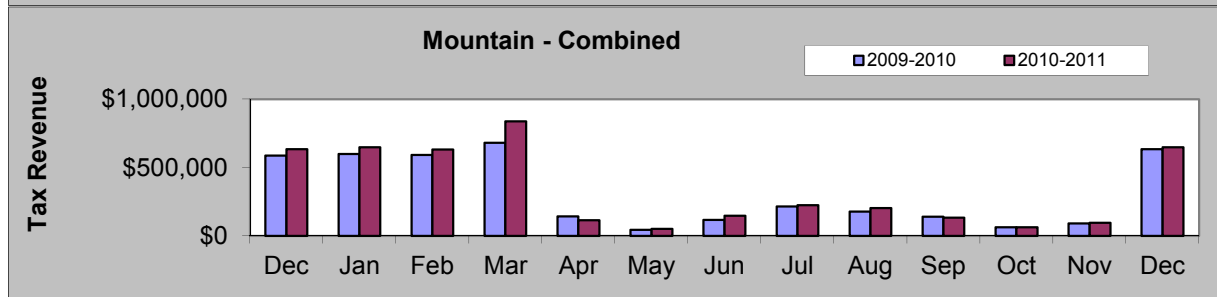
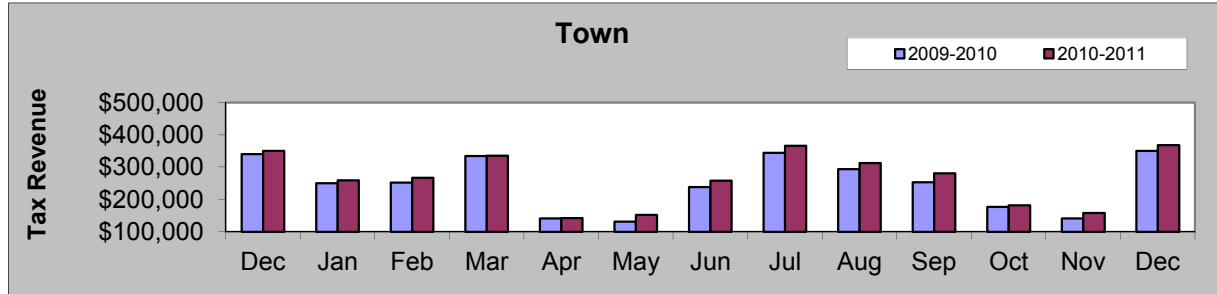


December 2010 - December 2011



DECEMBER COMPARISON BY AREA

Area	2010	2011	%
Town	\$350,585	\$368,103	5.00%
Mountain - Combined	\$635,435	\$649,676	2.24%
US 40 Corridor	\$766,608	\$780,668	1.83%
Regional	\$304,568	\$326,333	7.15%
West Steamboat	\$174,003	\$188,694	8.44%



Building Use Tax

December 2011 Building Use Tax collections decreased 20210.79% from December 2010.

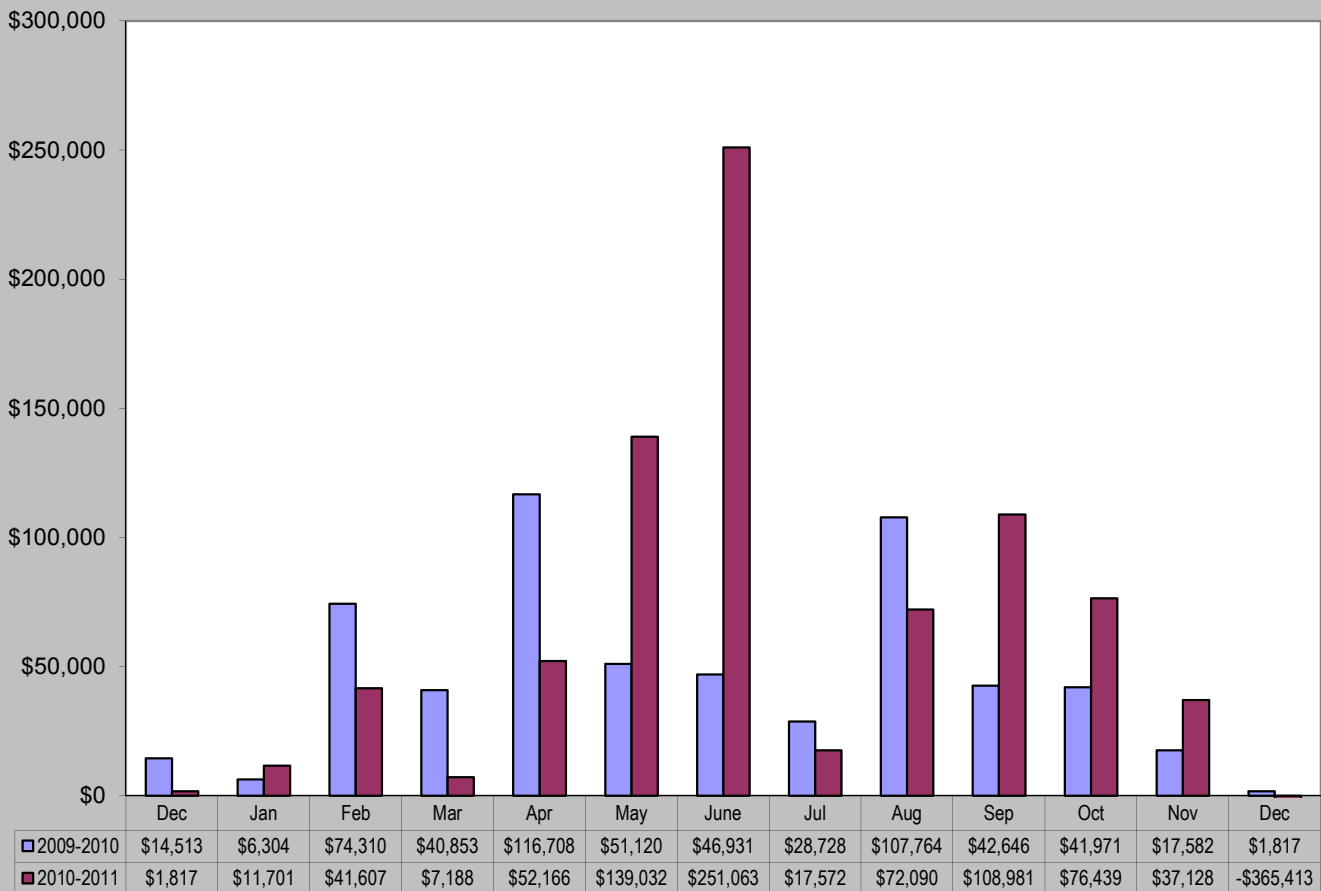
Year-to-date building use tax collections decreased 22.05%.

Note: Decrease in Dec. 2011 due to large building use tax refund.

December 2011	December 2010	% increase/decrease
Building Use Tax	Building Use Tax	
-\$365,413	\$1,817	-20210.79%

Building Use Tax	Building Use Tax	% increase/decrease
2011 YTD	2010 YTD	
\$449,553	\$576,734	-22.05%

Building Use Tax - 2009/2010 vs. 2010/2011



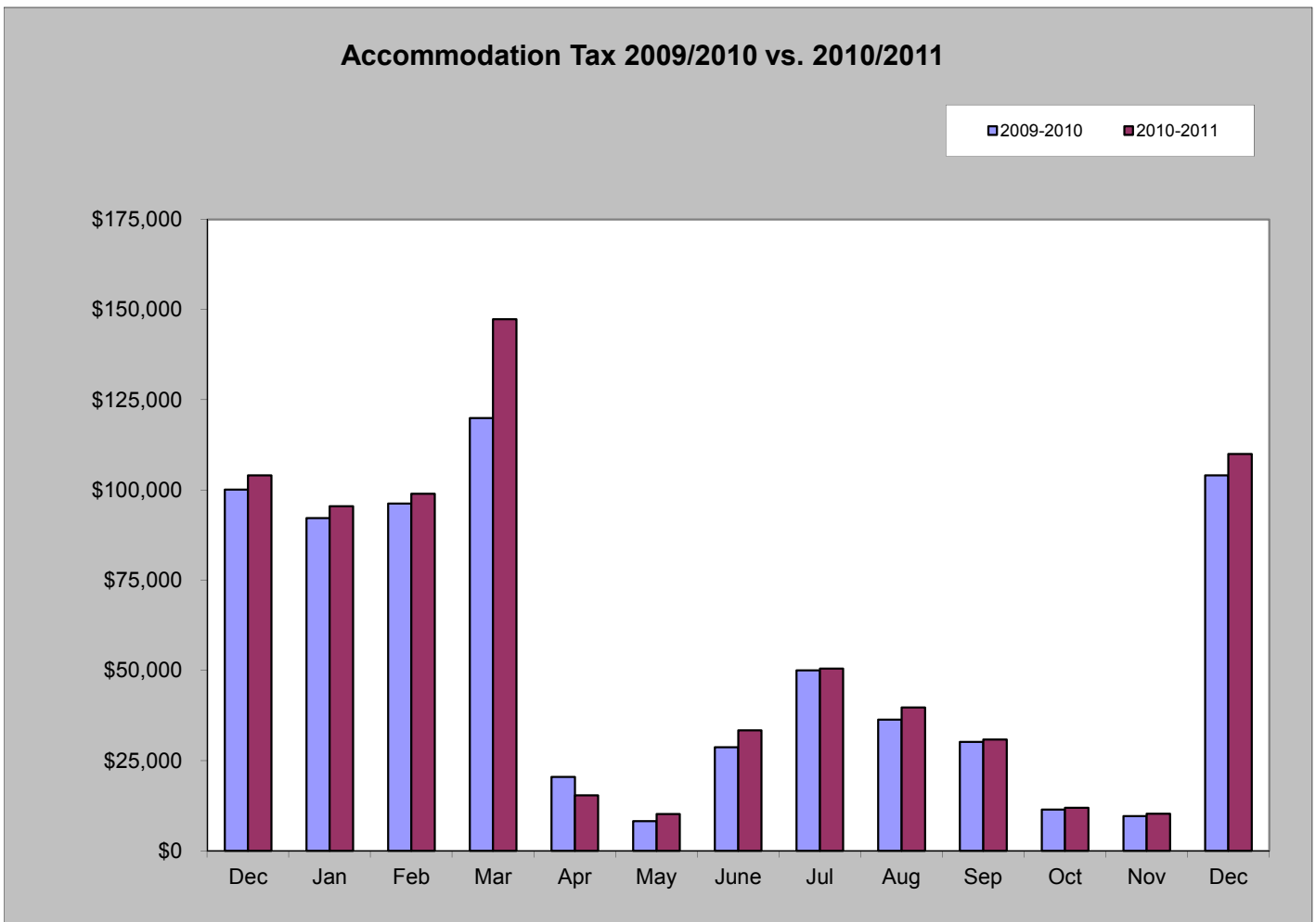
Accommodation Tax

December 2011 accommodation tax increased 5.63% from December 2010.

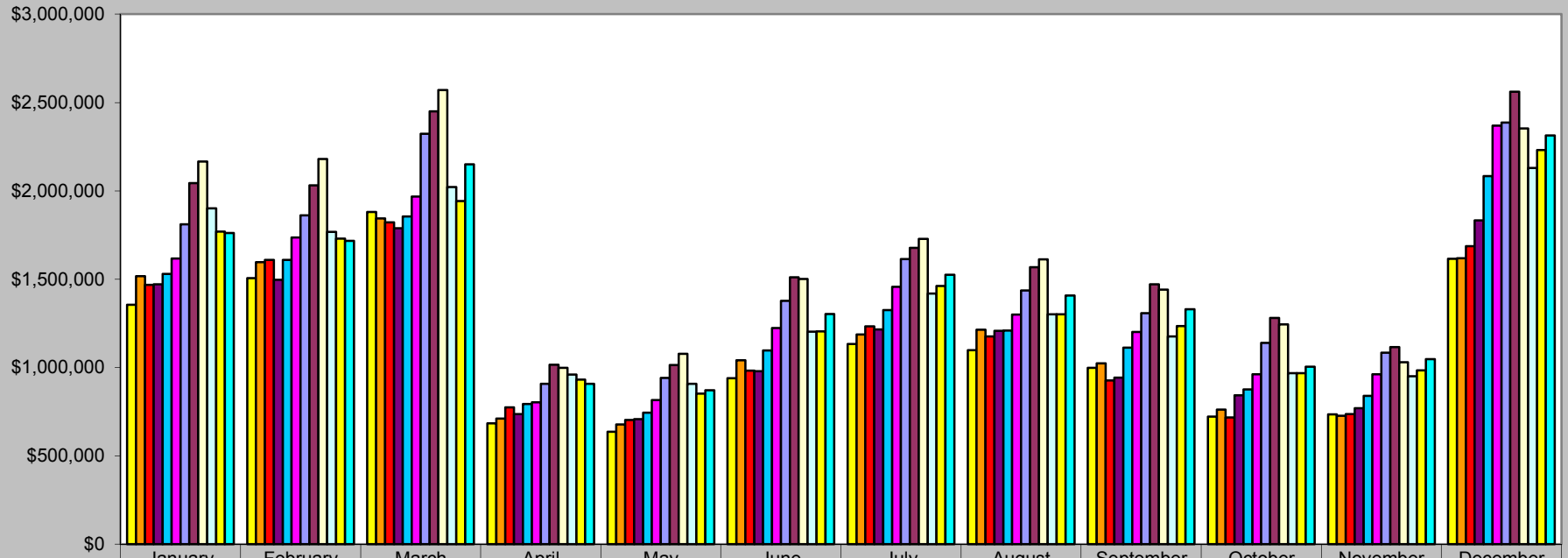
Year-to-date accommodation tax increased 7.64%.

December 2011	December 2010	% increase/decrease
Accommodation Tax	Accommodation Tax	
\$109,984	\$104,118	5.63%

Accommodation Tax	Accommodation Tax	% increase/decrease
2011 YTD	2010 YTD	
\$654,359	\$607,920	7.64%



Historical Sales Tax Data Sales Tax Totals - 2000 to 2011



	January	February	March	April	May	June	July	August	September	October	November	December
2000	\$1,355,249	\$1,505,684	\$1,879,789	\$684,244	\$637,578	\$939,481	\$1,133,251	\$1,098,829	\$998,420	\$722,617	\$734,644	\$1,615,197
2001	\$1,517,372	\$1,596,296	\$1,844,737	\$712,155	\$678,521	\$1,040,995	\$1,186,620	\$1,214,665	\$1,023,255	\$762,275	\$726,706	\$1,618,152
2002	\$1,468,242	\$1,609,764	\$1,822,635	\$774,194	\$704,180	\$983,142	\$1,233,685	\$1,175,569	\$927,496	\$718,049	\$736,818	\$1,687,509
2003	\$1,471,061	\$1,497,398	\$1,787,877	\$737,255	\$708,947	\$979,861	\$1,215,159	\$1,207,373	\$942,596	\$842,980	\$770,632	\$1,833,614
2004	\$1,530,388	\$1,609,507	\$1,855,895	\$793,619	\$744,456	\$1,097,619	\$1,325,813	\$1,209,657	\$1,112,747	\$875,854	\$839,590	\$2,083,871
2005	\$1,617,152	\$1,735,422	\$1,968,239	\$803,359	\$815,925	\$1,223,263	\$1,457,514	\$1,299,302	\$1,201,406	\$962,731	\$961,551	\$2,369,566
2006	\$1,811,413	\$1,861,558	\$2,322,443	\$908,584	\$941,595	\$1,377,269	\$1,614,695	\$1,436,115	\$1,307,845	\$1,139,648	\$1,084,858	\$2,386,275
2007	\$2,044,667	\$2,032,045	\$2,450,620	\$1,016,601	\$1,015,101	\$1,510,706	\$1,676,821	\$1,567,534	\$1,470,714	\$1,281,546	\$1,115,446	\$2,561,705
2008	\$2,166,093	\$2,180,532	\$2,570,347	\$999,144	\$1,077,244	\$1,500,946	\$1,728,329	\$1,612,531	\$1,440,373	\$1,244,023	\$1,030,654	\$2,354,077
2009	\$1,900,660	\$1,767,622	\$2,022,205	\$960,333	\$908,729	\$1,203,304	\$1,419,472	\$1,301,838	\$1,176,374	\$967,698	\$951,706	\$2,130,350
2010	\$1,770,224	\$1,729,871	\$1,942,205	\$931,441	\$852,942	\$1,204,170	\$1,462,498	\$1,300,901	\$1,235,021	\$967,676	\$984,127	\$2,231,190
2011	\$1,761,185	\$1,716,813	\$2,149,584	\$907,682	\$871,779	\$1,303,361	\$1,524,533	\$1,407,909	\$1,330,376	\$1,005,309	\$1,047,461	\$2,313,474