



PRELIMINARY- SUBJECT TO CHANGE

June 2012 Taxes, Remitted in July 2012 Sales, Use, and Accommodation Tax Report

This City of Steamboat Springs Sales, Use, and Accommodation Tax Report examines tax collections for the month of June 2012, which were remitted to the City in July 2012.

Sales Tax

June 2012 sales tax collections increased by 4.12% from sales tax collections for the month of June 2011. Year-to-date total sales tax collections are 1.91% higher than those of 2011 year-to-date.

Sales Tax June 2012	Sales Tax June 2011	% increase/decrease over last year
\$1,358,034	\$1,304,311	4.12%

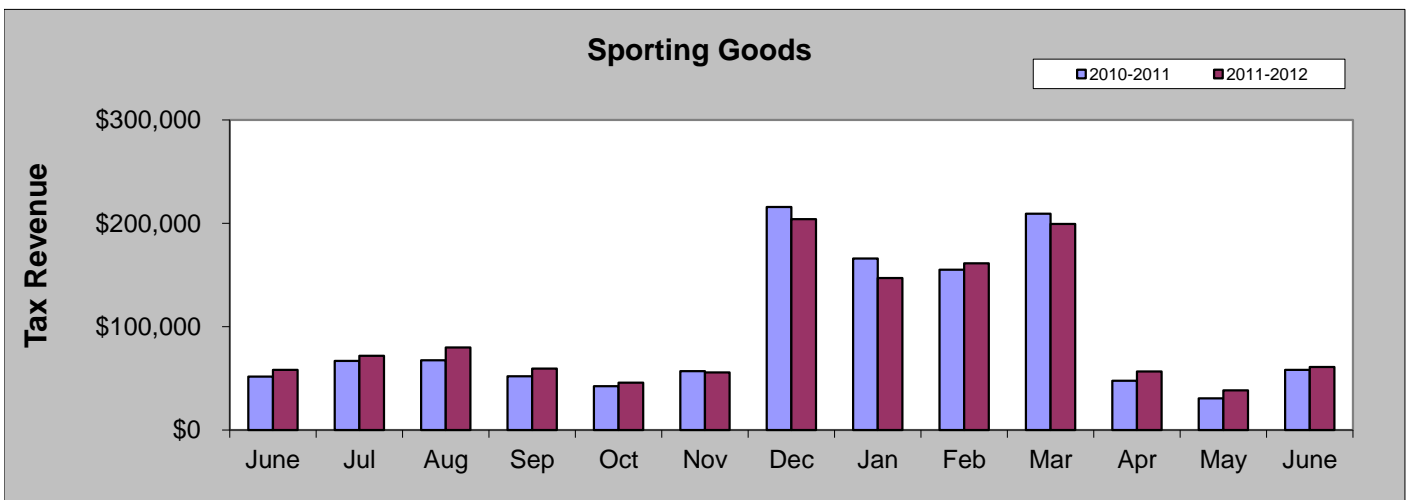
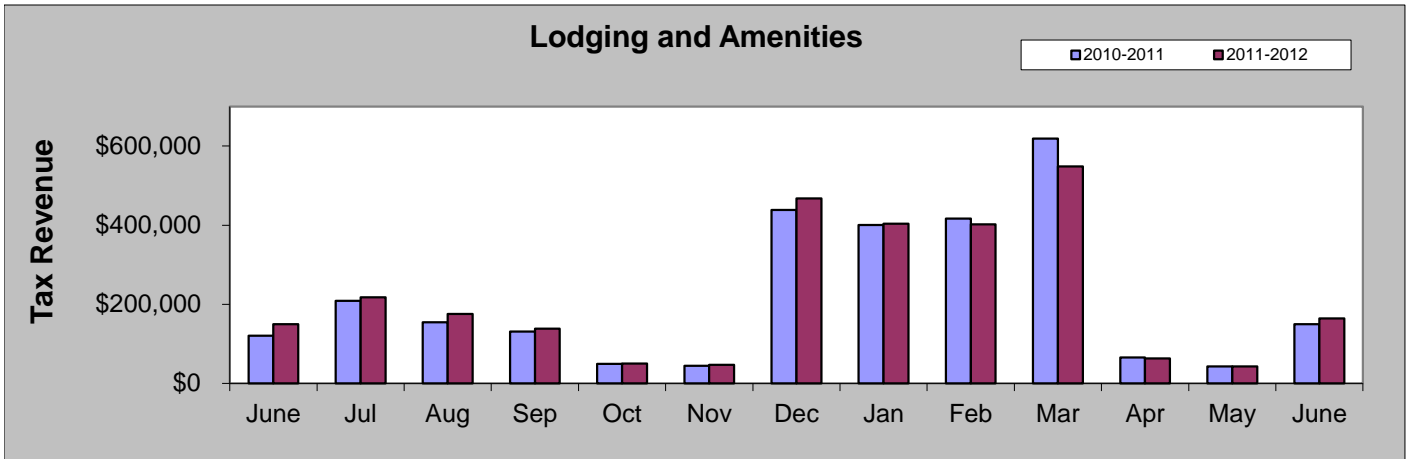
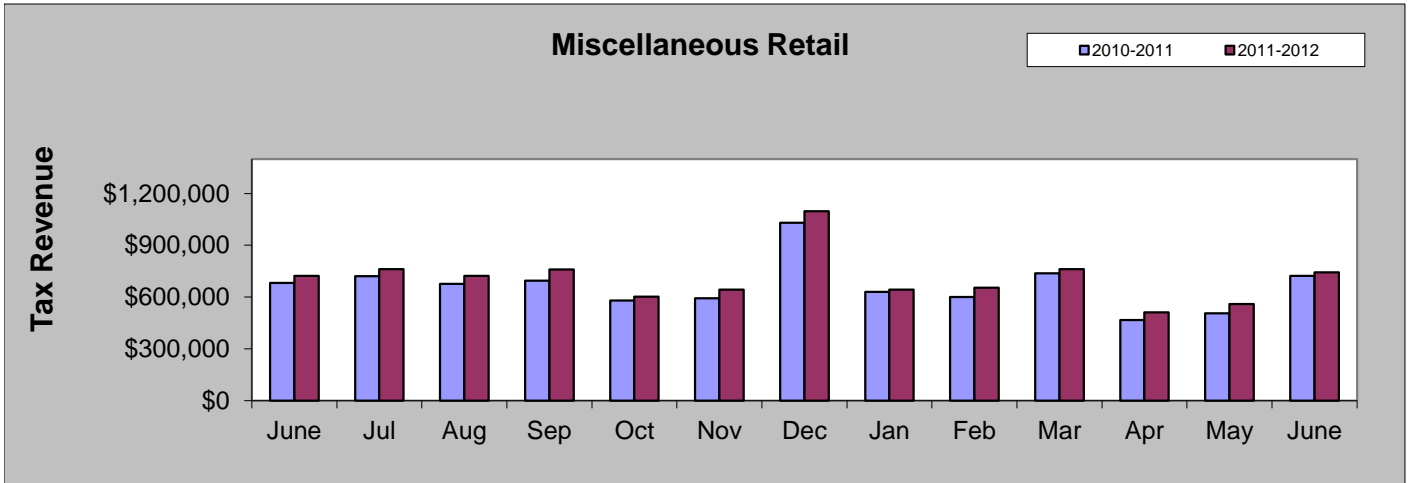
Sales Tax 2012 YTD	Sales Tax 2011 YTD	% increase/decrease over Year to Date
\$8,879,393	\$8,713,066	1.91%

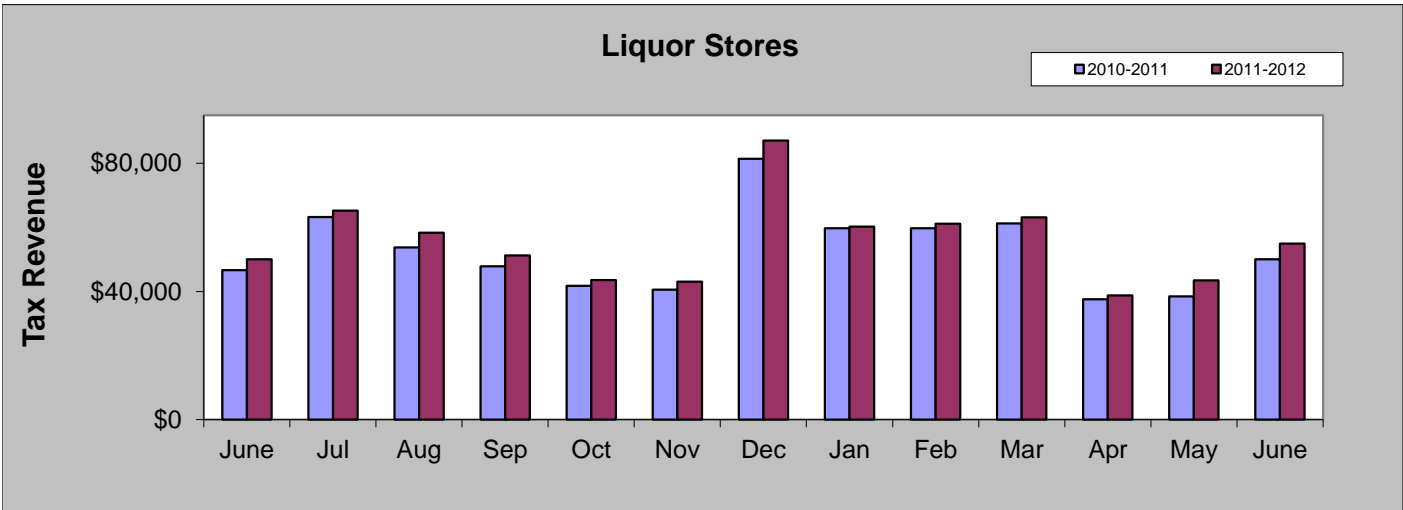
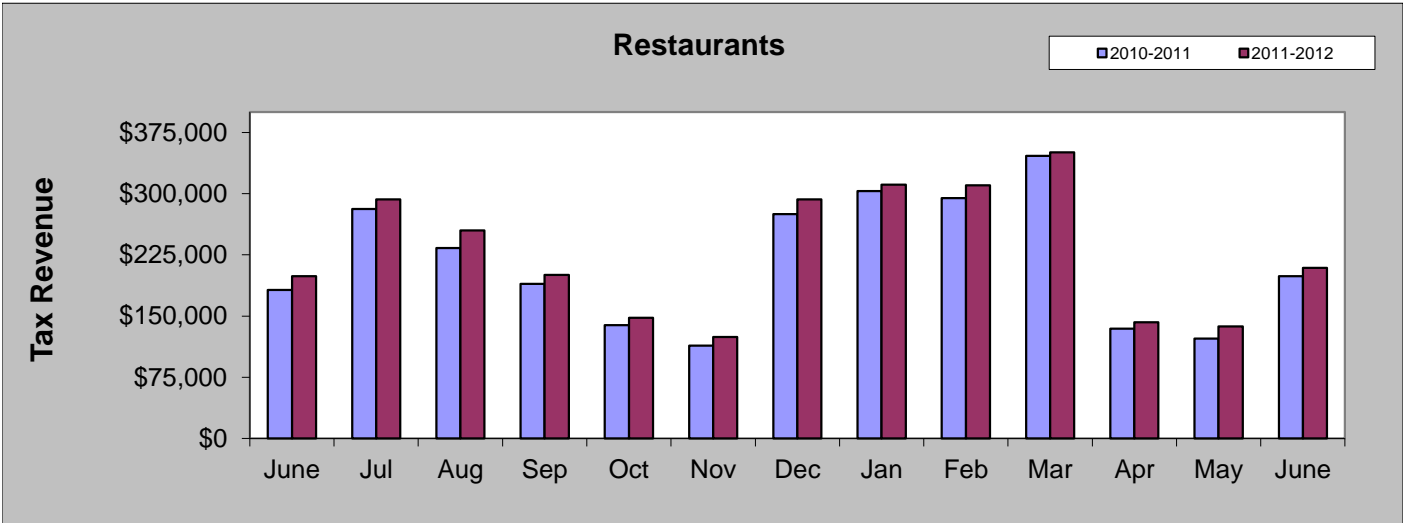
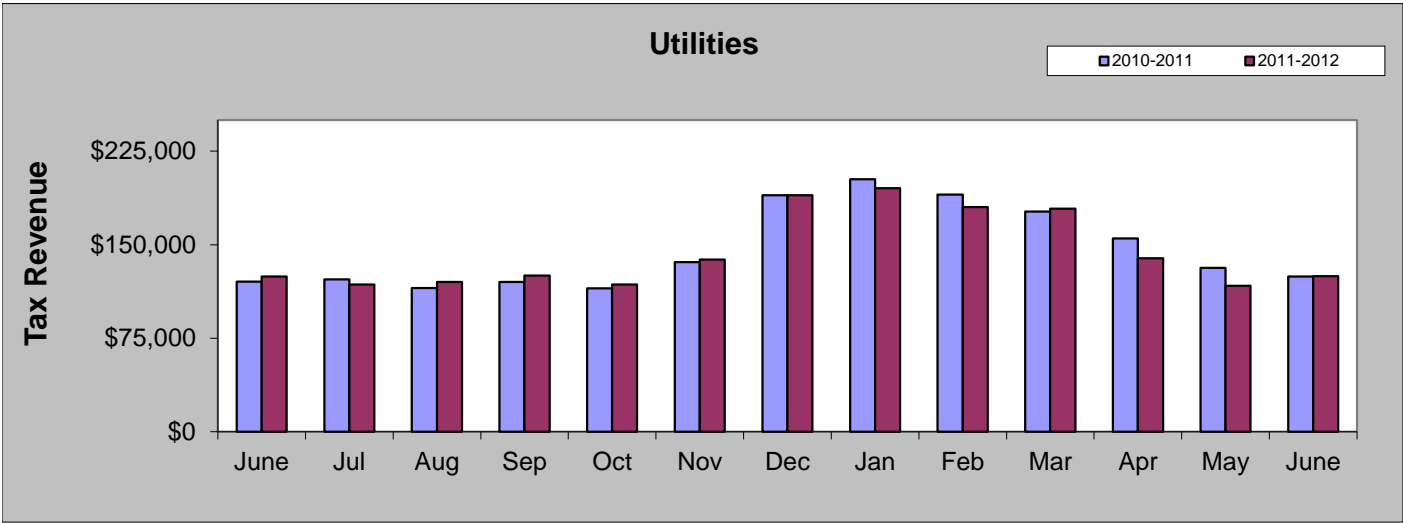
June 2012 Sales Categories



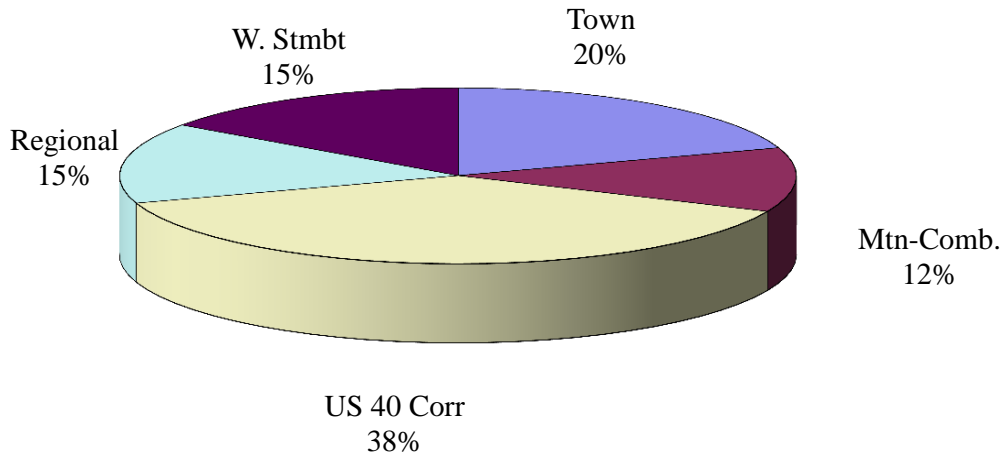
JUNE COMPARISON BY CATEGORY

	2011	2012	%
Miscellaneous Retail	\$722,720	\$743,823	2.92%
Lodging and Amenities	\$149,930	\$164,400	9.65%
Sporting Goods	\$58,091	\$60,871	4.78%
Utilities	\$124,579	\$124,810	0.19%
Restaurants	\$198,940	\$209,181	5.15%
Liquor Stores	\$50,050	\$54,949	9.79%

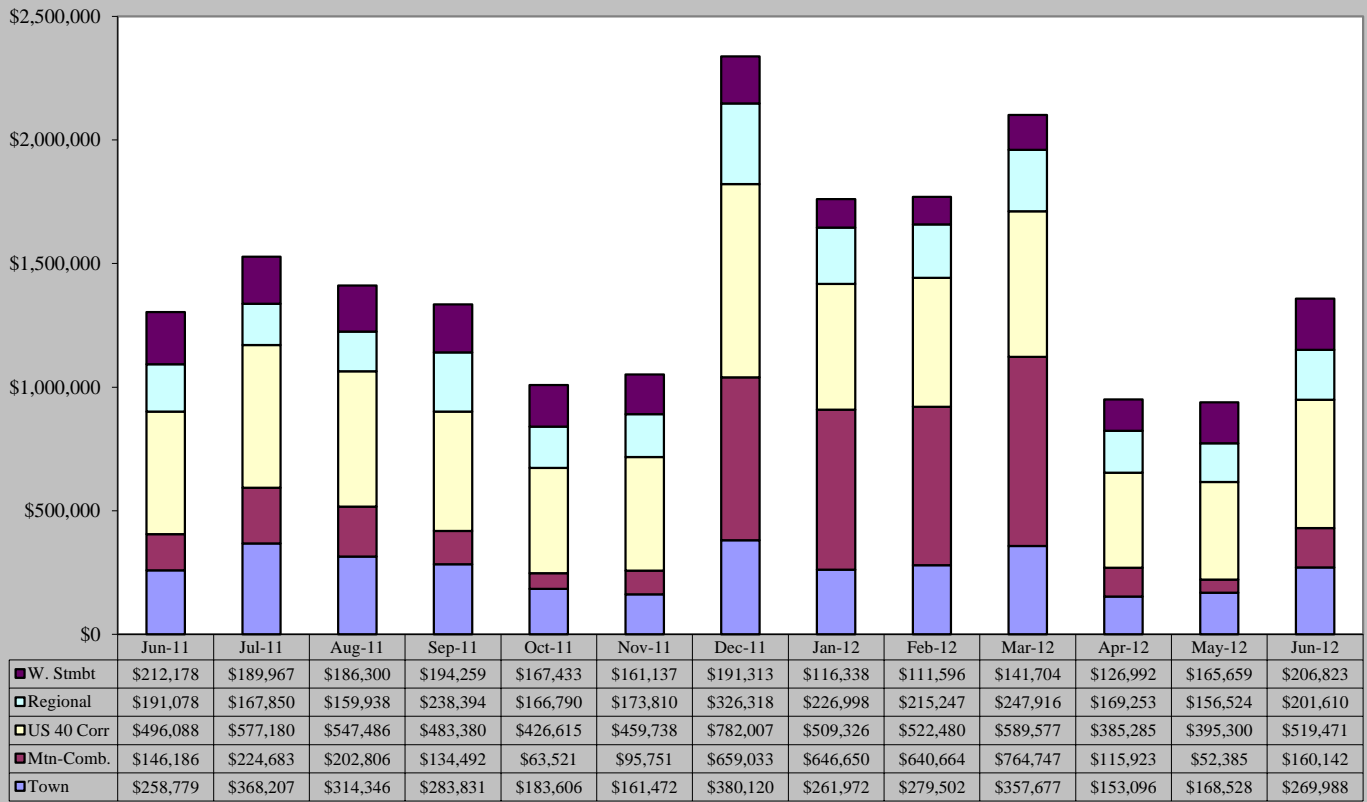




June 2012 Sales Tax By Area

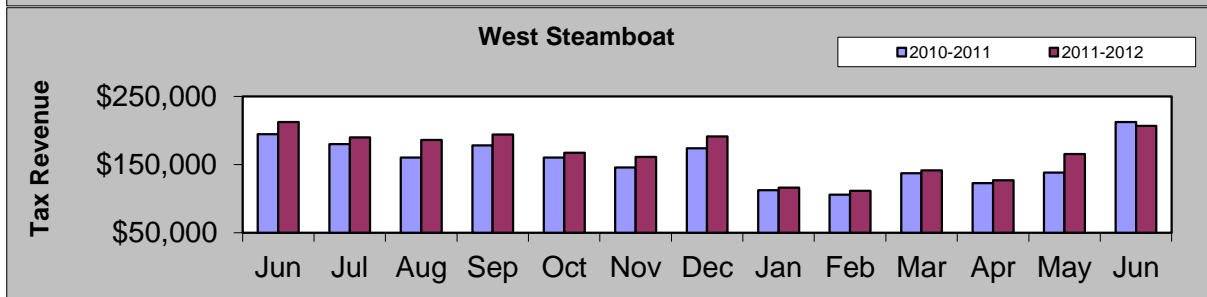
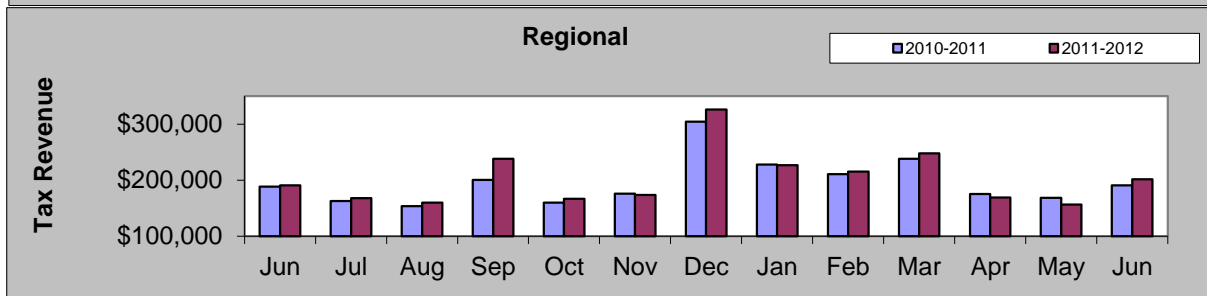
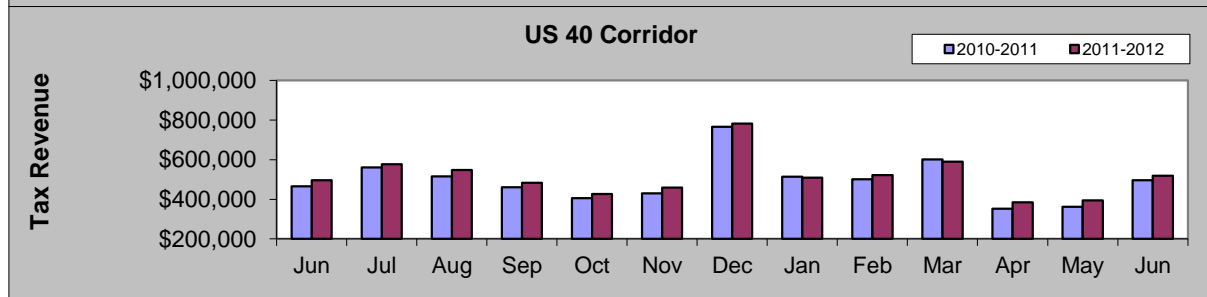
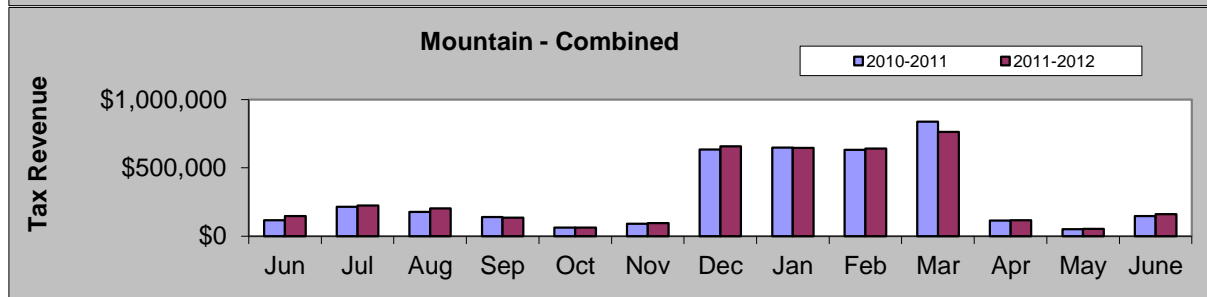
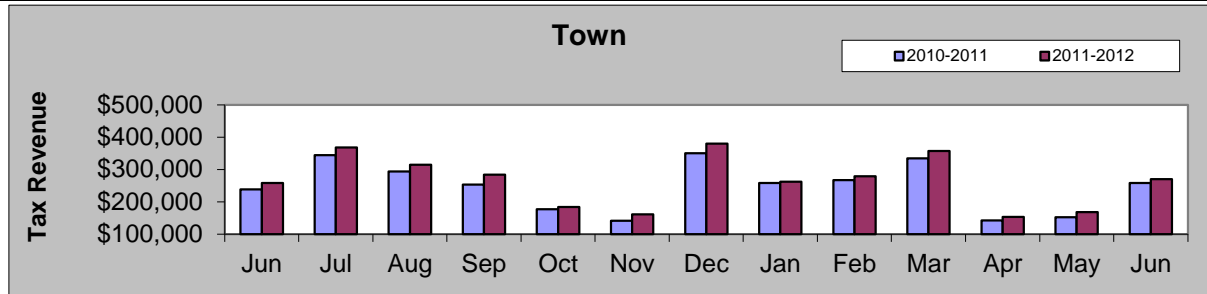


June 2011 - June 2012



JUNE COMPARISON BY AREA

Area	2011	2012	%
Town	\$258,779	\$269,988	4.33%
Mountain - Combined	\$146,186	\$160,142	9.55%
US 40 Corridor	\$496,088	\$519,471	4.71%
Regional	\$191,078	\$201,610	5.51%
West Steamboat	\$212,178	\$206,823	-2.52%



Building Use Tax

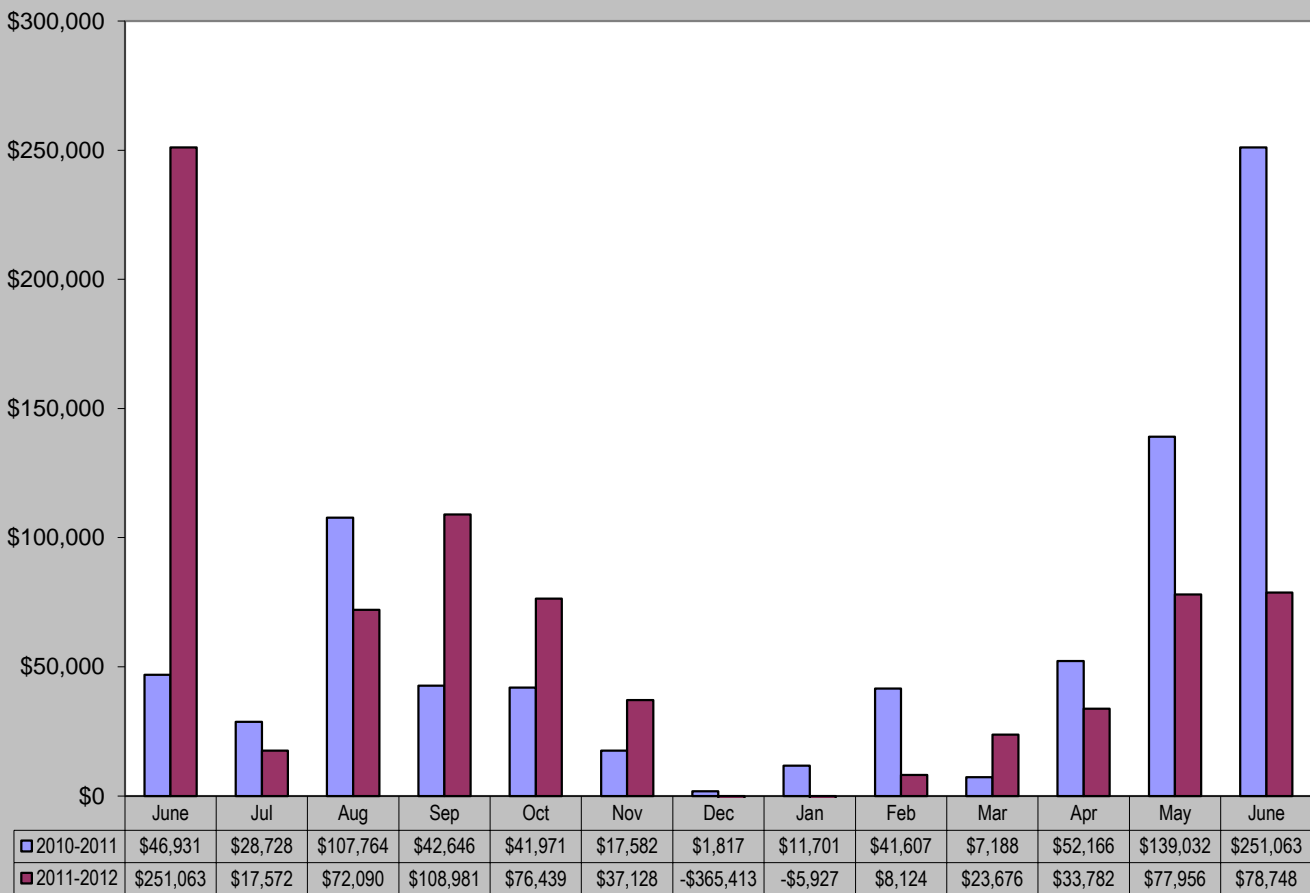
June 2012 Building Use Tax collections decreased 68.63% from June 2011.

Year-to-date building use tax collections decreased 52.35%.

June 2012	June 2011	% increase/decrease
Building Use Tax	Building Use Tax	
\$78,748	\$251,063	-68.63%

Building Use Tax	Building Use Tax	% increase/decrease
2012 YTD	2011 YTD	
\$214,162	\$449,449	-52.35%

Building Use Tax - 2010/2011 vs. 2011/2012



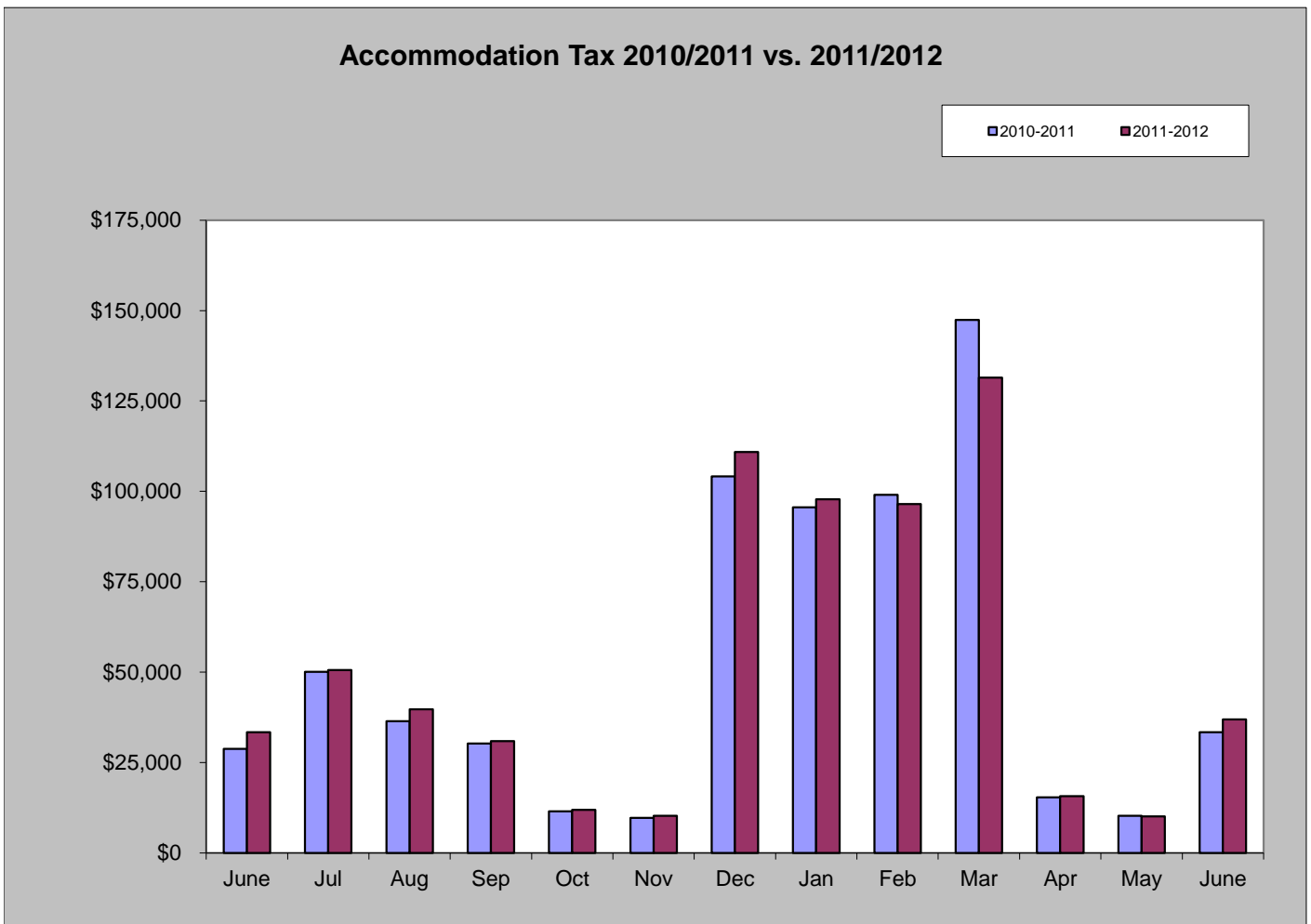
Accommodation Tax

June 2012 accommodation tax increased 10.47% from June 2011.

Year-to-date accommodation tax decreased 3.14%.

June 2012	June 2011	% increase/decrease
Accommodation Tax	Accommodation Tax	
\$36,882	\$33,388	10.47%

Accommodation Tax	Accommodation Tax	% increase/decrease
2012 YTD	2011 YTD	
\$388,403	\$401,007	-3.14%

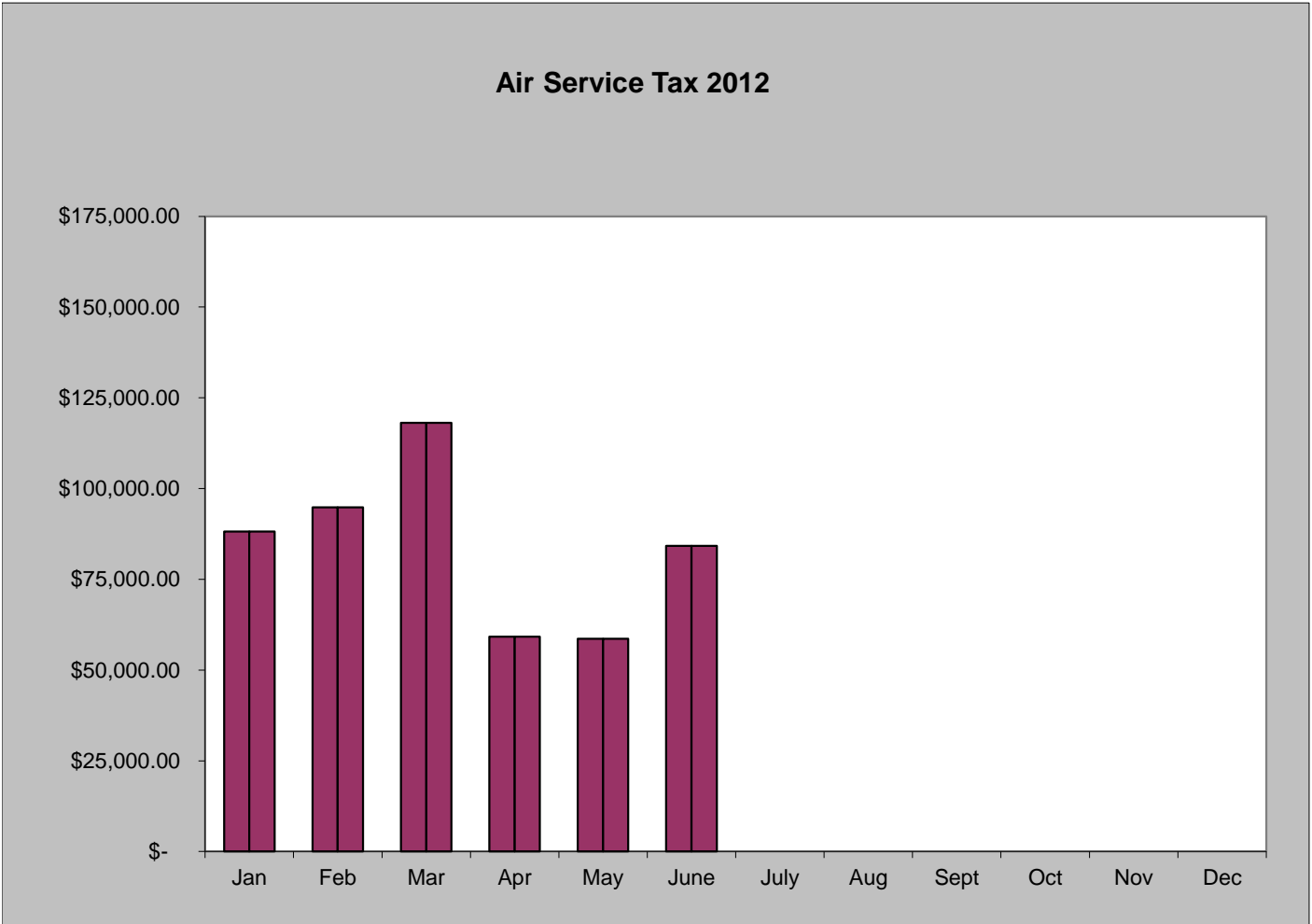


Local Marketing District - Air Service Sales Tax

June 2012 air service sales tax was \$118,127

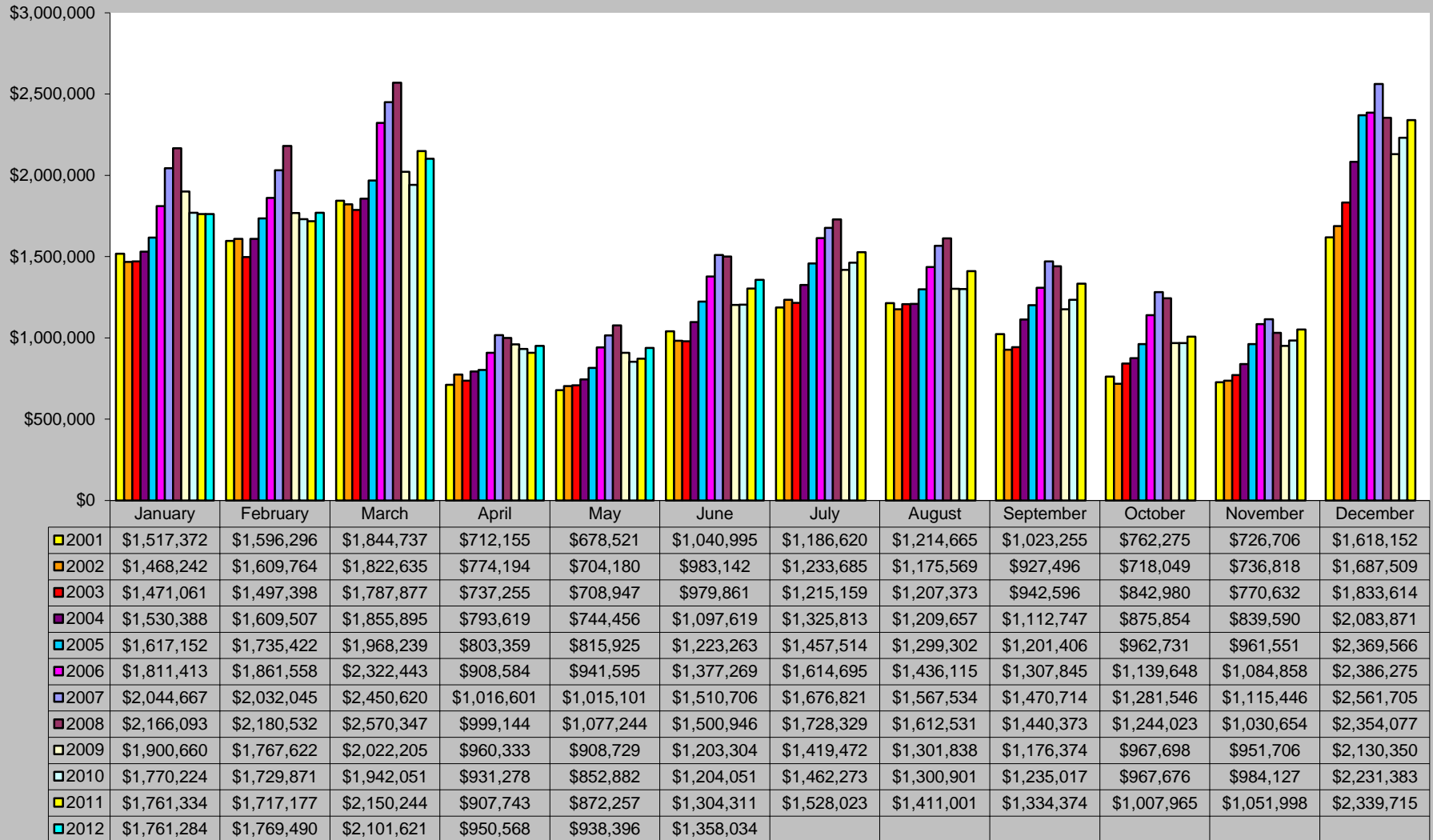
Year-to-date air service sales tax is \$503,100

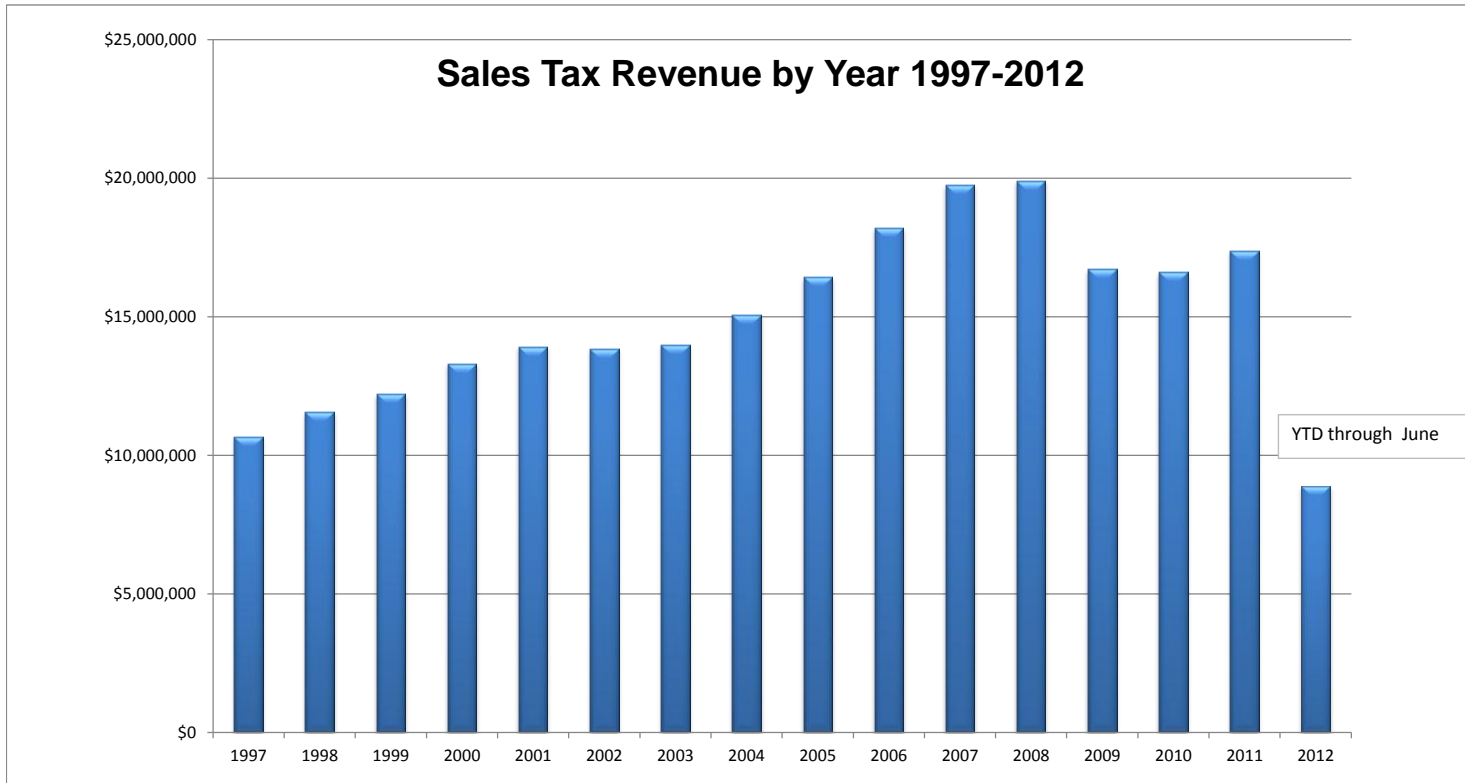
June 2012	Year to Date 2012
Air Service Sales Tax	Air Service Sales Tax
\$118,127	\$503,100



Historical Sales Tax Data

Sales Tax Totals - 2001 to 2012





Totals by Year		
1997	\$	10,672,320
1998	\$	11,559,068
1999	\$	12,218,807
2000	\$	13,304,983
2001	\$	13,921,749
2002	\$	13,841,283
2003	\$	13,994,753
2004	\$	15,079,016
2005	\$	16,415,430
2006	\$	18,192,298
2007	\$	19,743,507
2008	\$	19,904,293
2009	\$	16,710,291
2010	\$	16,611,733
2011	\$	17,386,144
*2012	\$	8,879,393

*2012 totals are year-to-date through June