



**PRELIMINARY- SUBJECT TO CHANGE**

## October 2012 Taxes, Remitted in November 2012 Sales, Use, and Accommodation Tax Report

This City of Steamboat Springs Sales, Use, and Accommodation Tax Report examines tax collections for the month of October 2012, which were remitted to the City in November 2012.

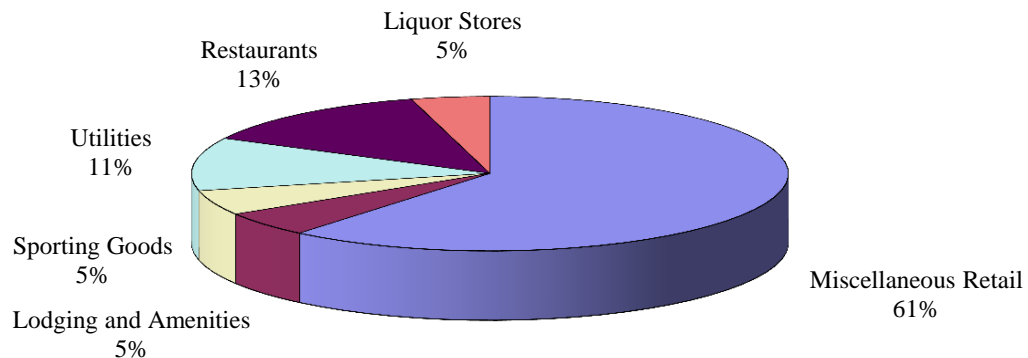
### Sales Tax

October 2012 sales tax collections increased by 2.08% from sales tax collections for the month of October 2011. Year-to-date total sales tax collections are 2.1% higher than those of 2011 year-to-date.

Sales Tax October 2012	Sales Tax October 2011	% increase/decrease over last year
\$1,029,090	\$1,008,144	2.08%

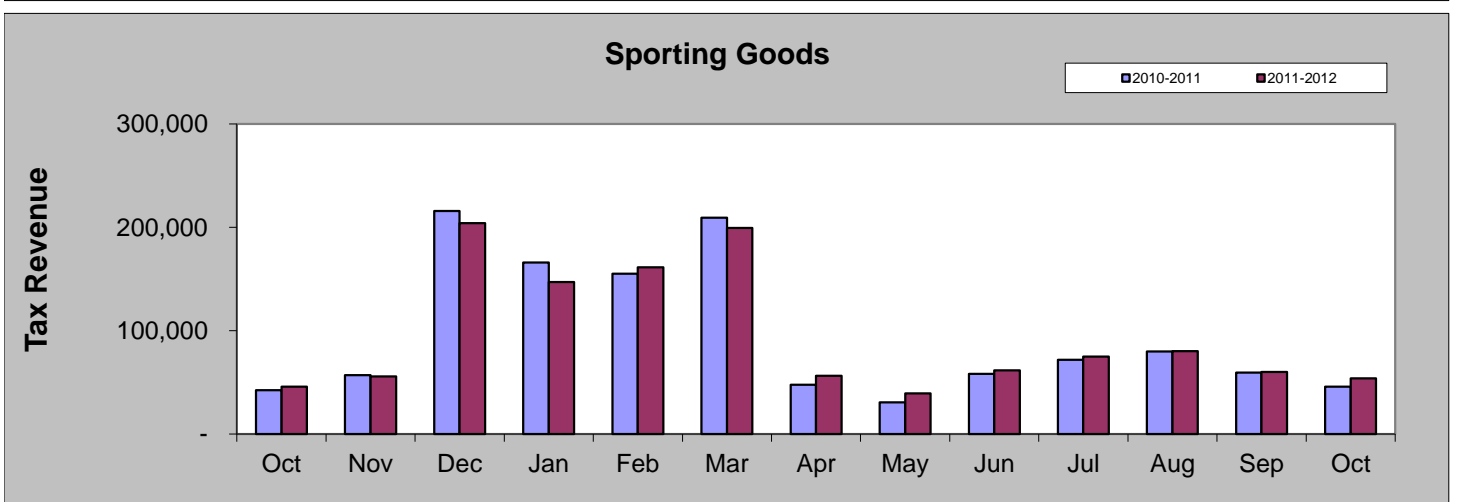
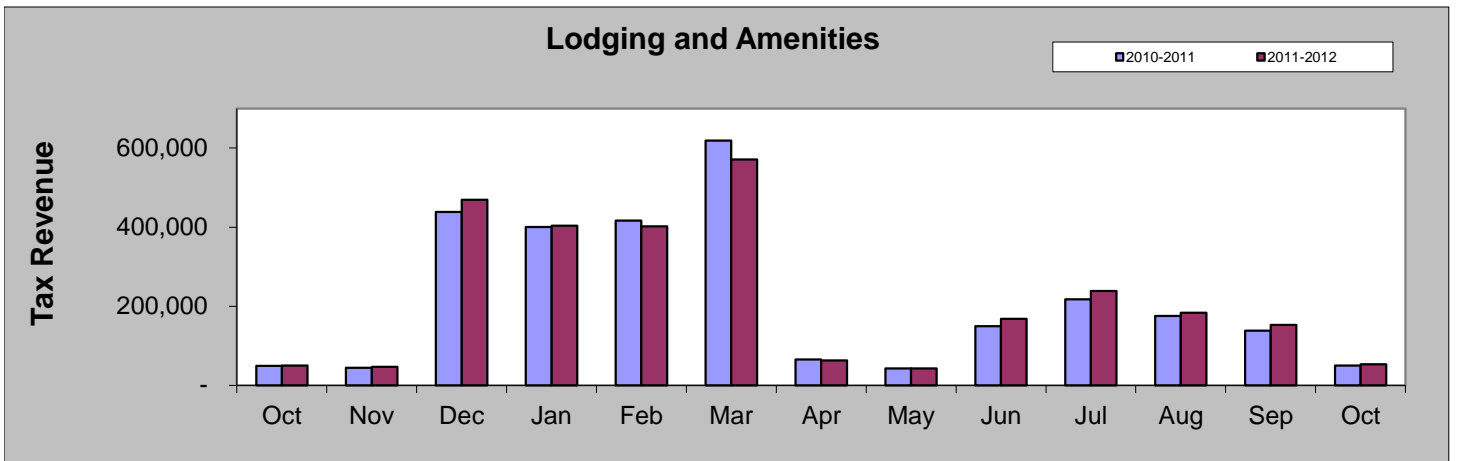
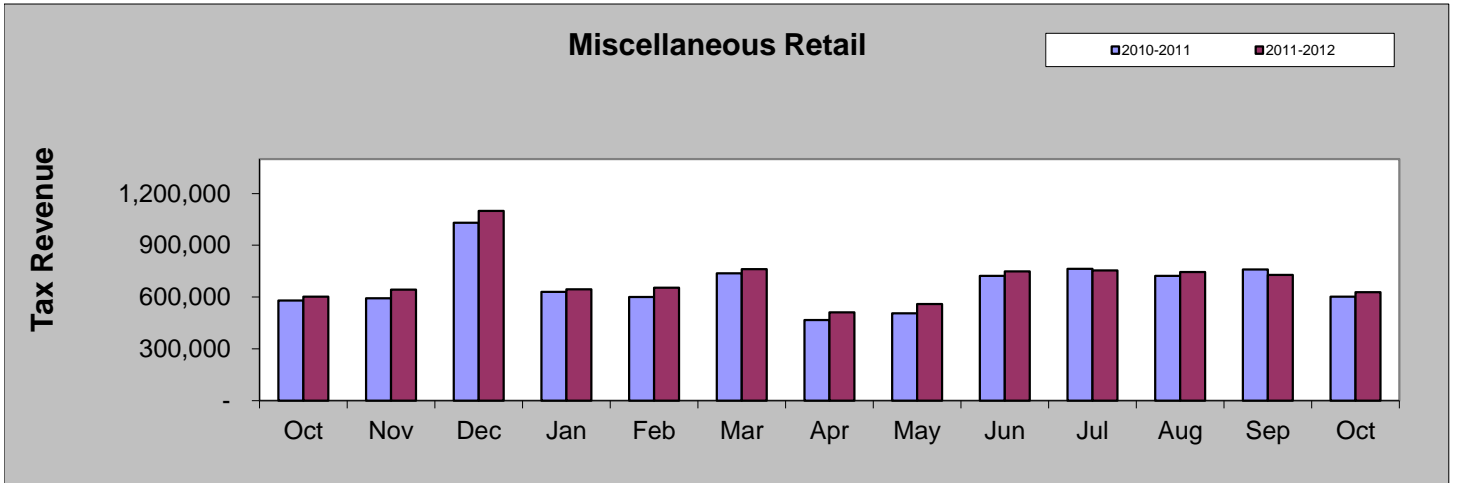
Sales Tax 2012 YTD	Sales Tax 2011 YTD	% increase/decrease over Year to Date
\$14,289,867	\$13,995,528	2.10%

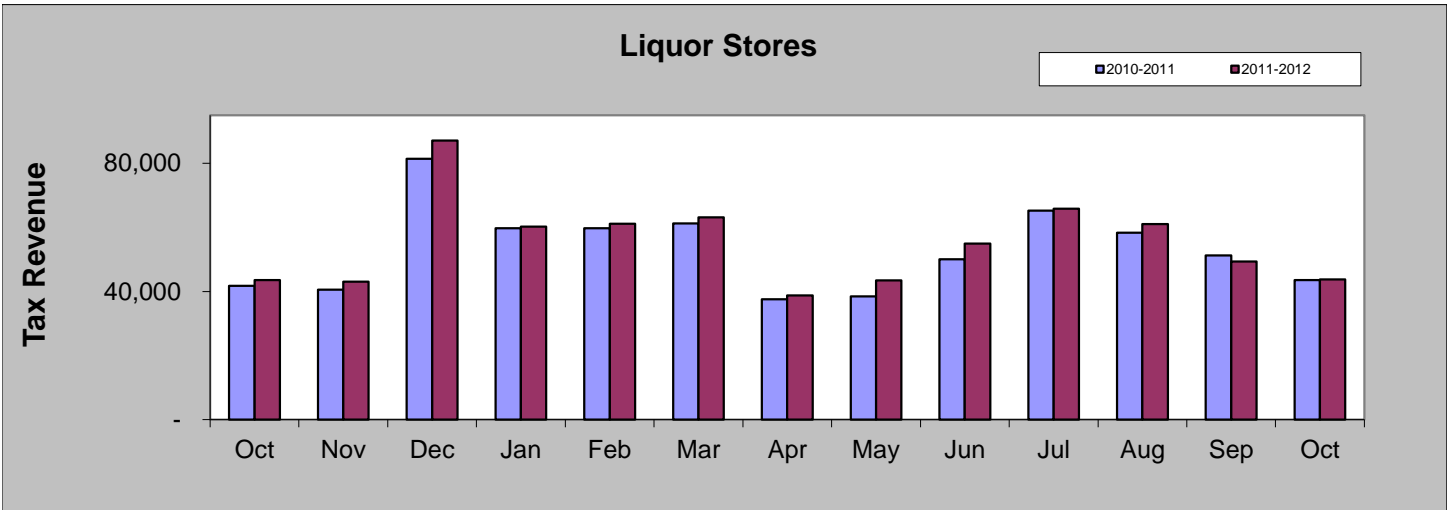
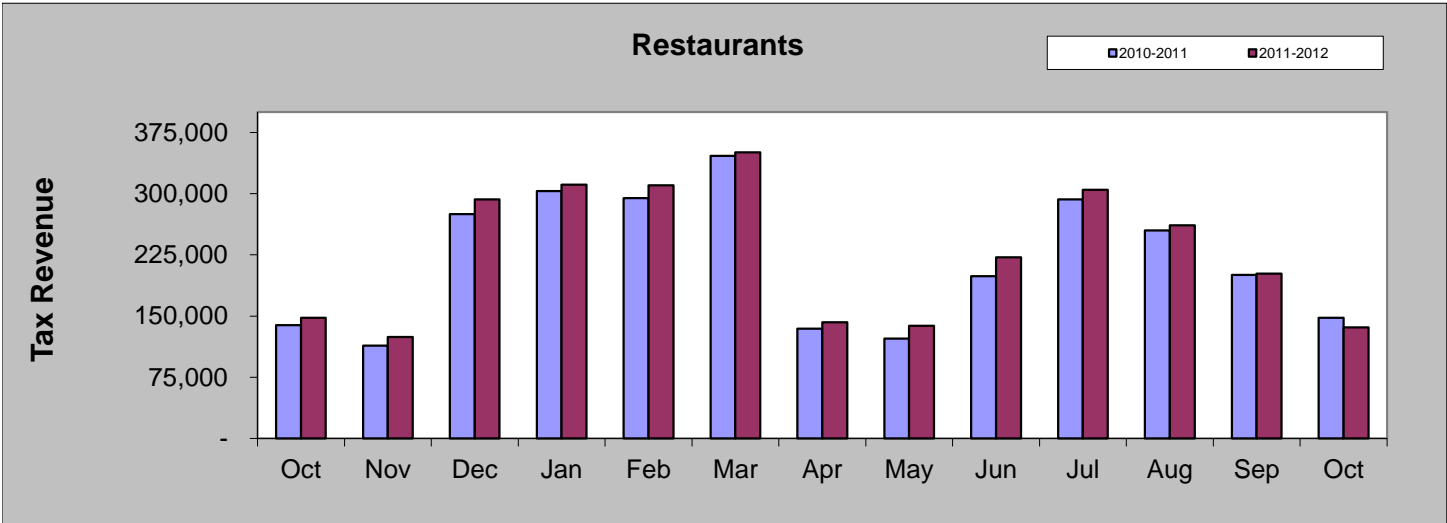
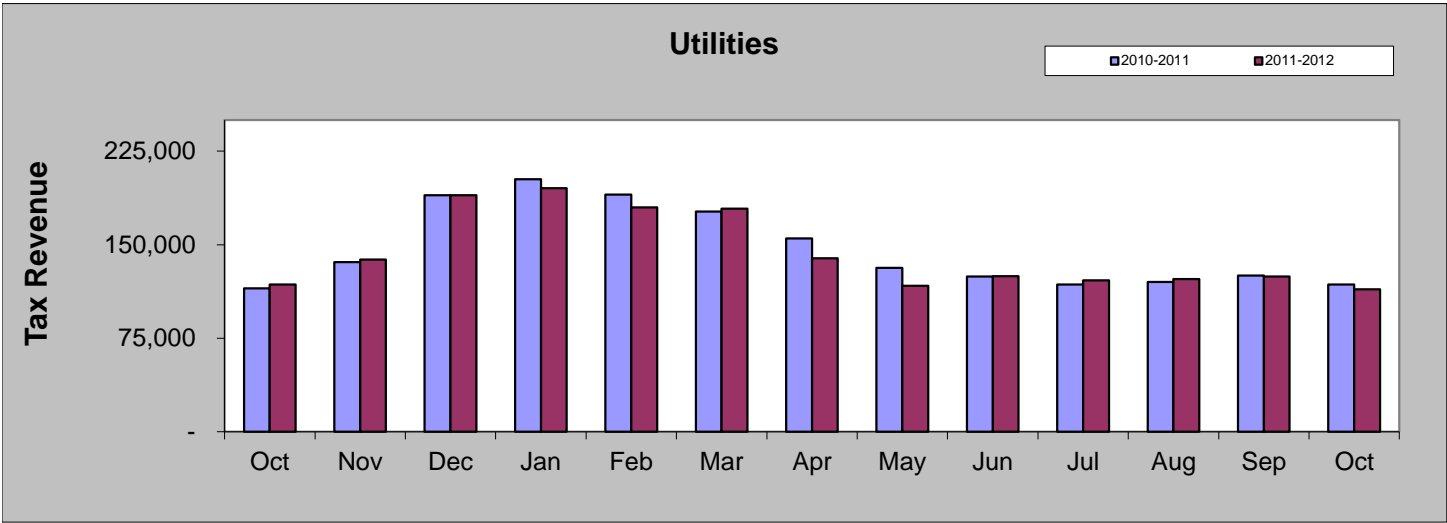
**October 2012 Sales Categories**



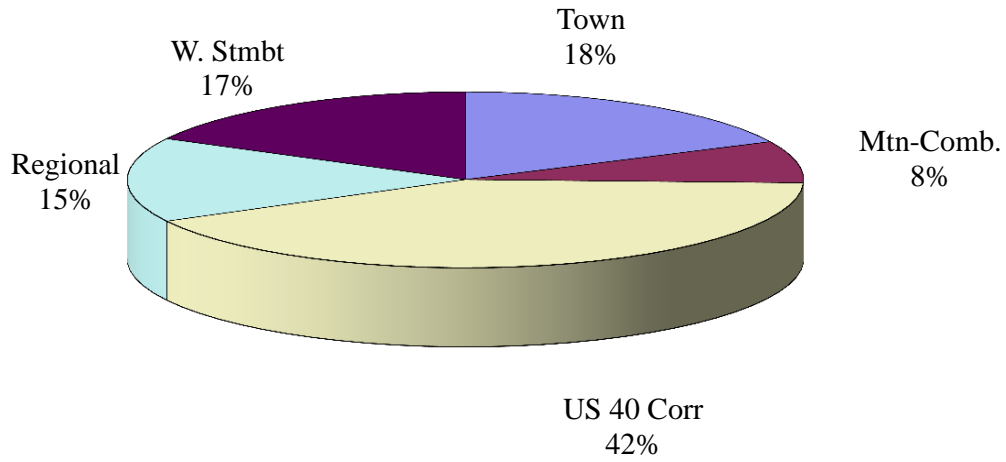
### OCTOBER COMPARISON BY CATEGORY

	2011	2012	%
Miscellaneous Retail	\$603,412	\$627,551	4.00%
Lodging and Amenities	\$49,627	\$53,597	8.00%
Sporting Goods	\$45,743	\$53,698	17.39%
Utilities	\$118,103	\$114,313	-3.21%
Restaurants	\$147,739	\$136,190	-7.82%
Liquor Stores	\$43,520	\$43,741	0.51%

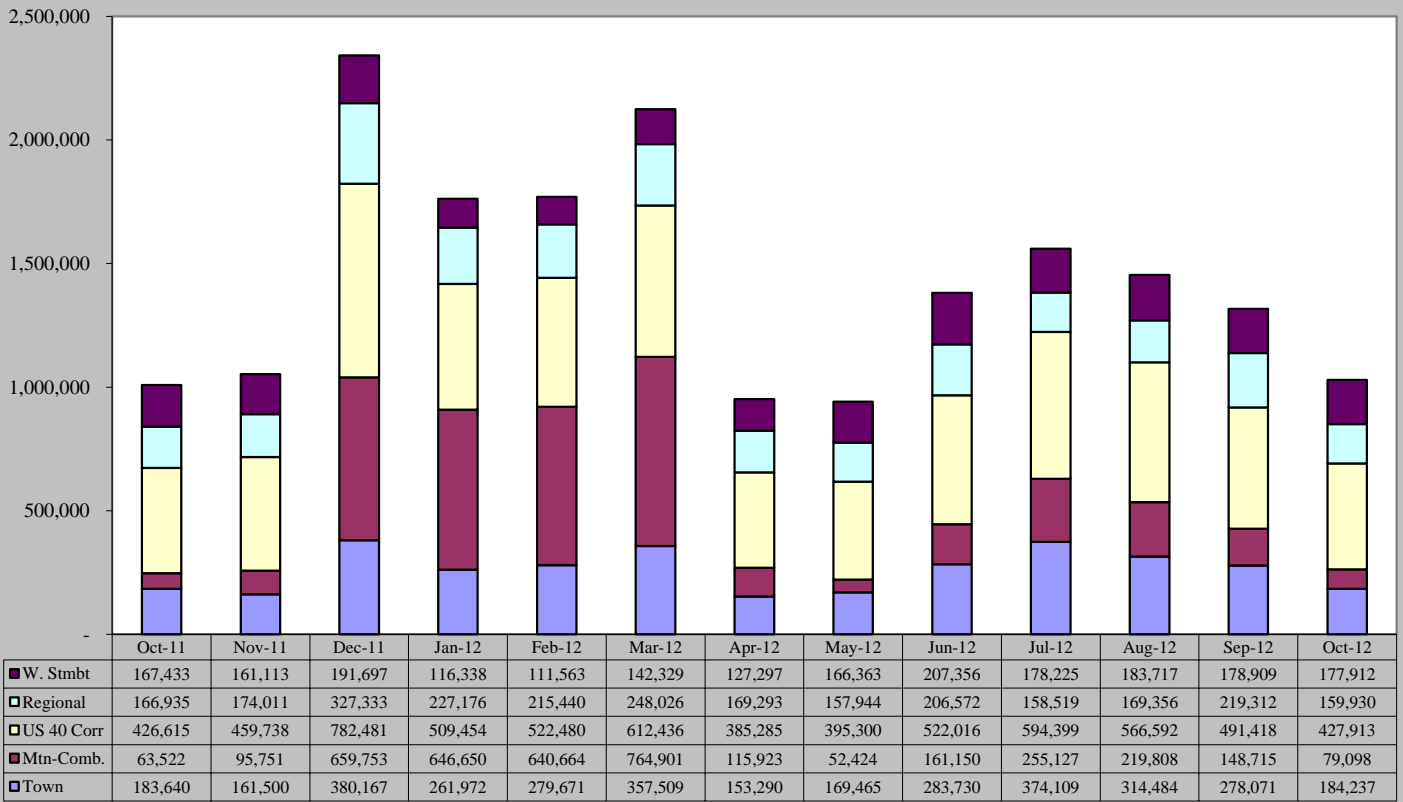




## October 2012 Sales Tax By Area

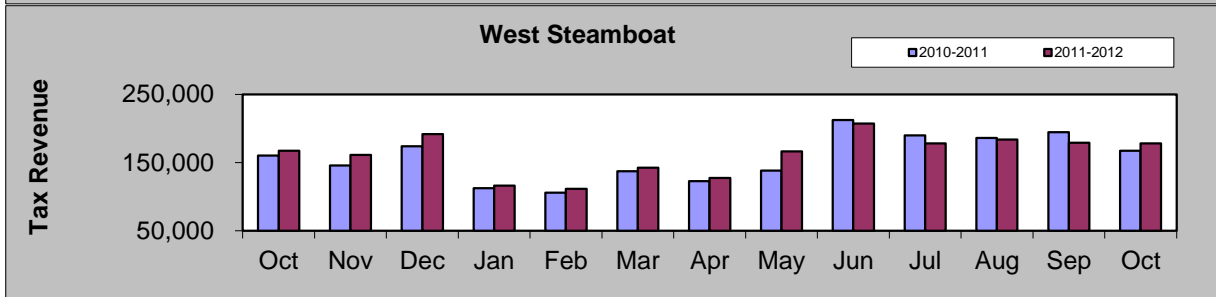
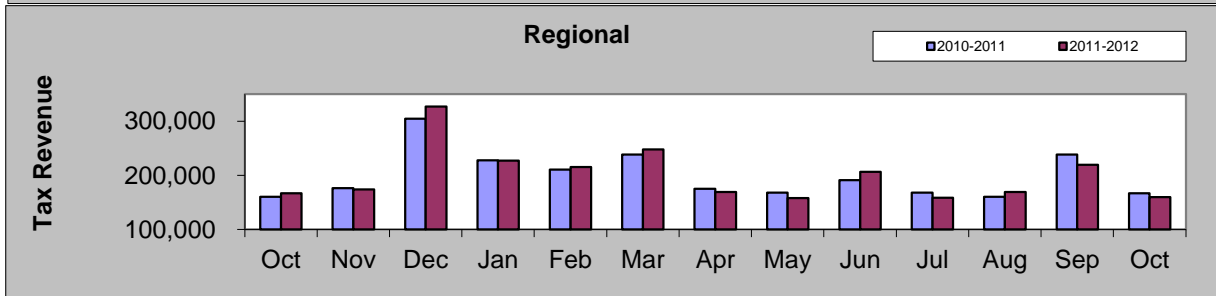
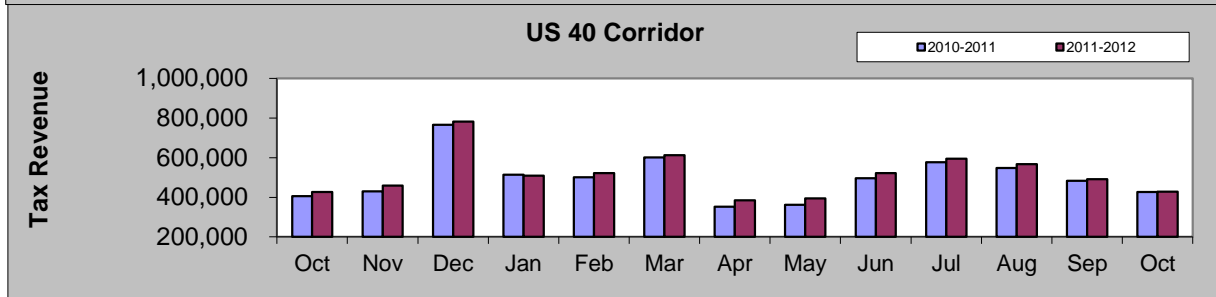
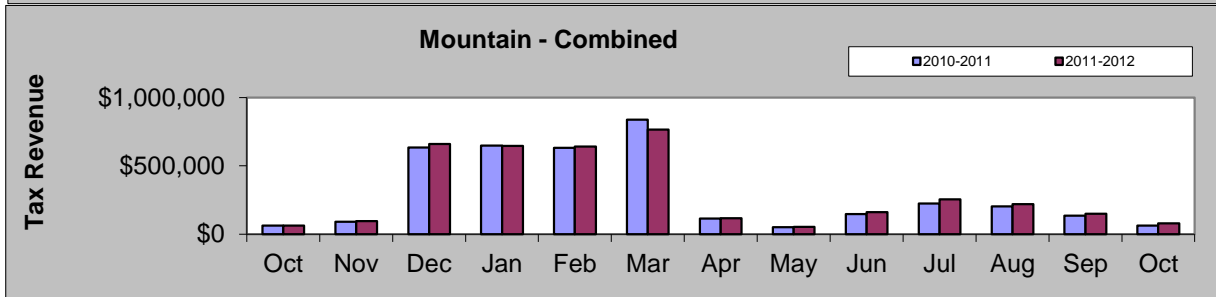
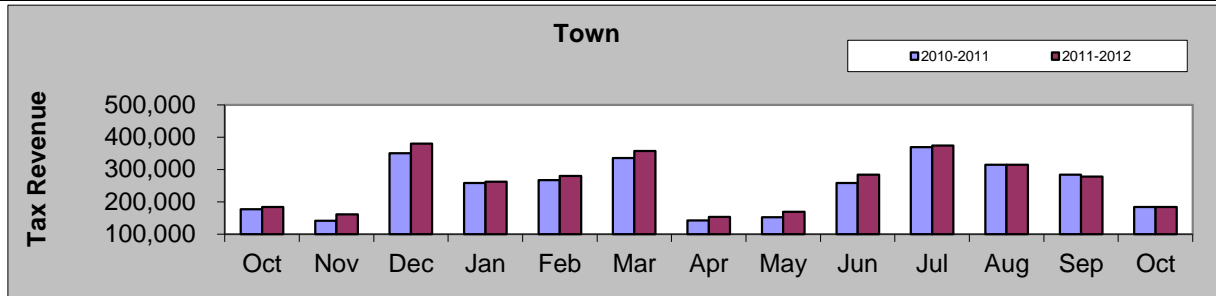


## October 2011 - October 2012



### OCTOBER COMPARISON BY AREA

Area	2011	2012	%
Town	\$183,640	\$184,237	0.33%
Mountain - Combined	\$63,521	\$79,098	24.52%
US 40 Corridor	\$426,615	\$427,913	0.30%
Regional	\$166,935	\$159,930	-4.20%
West Steamboat	\$167,433	\$177,912	6.26%



# Building Use Tax

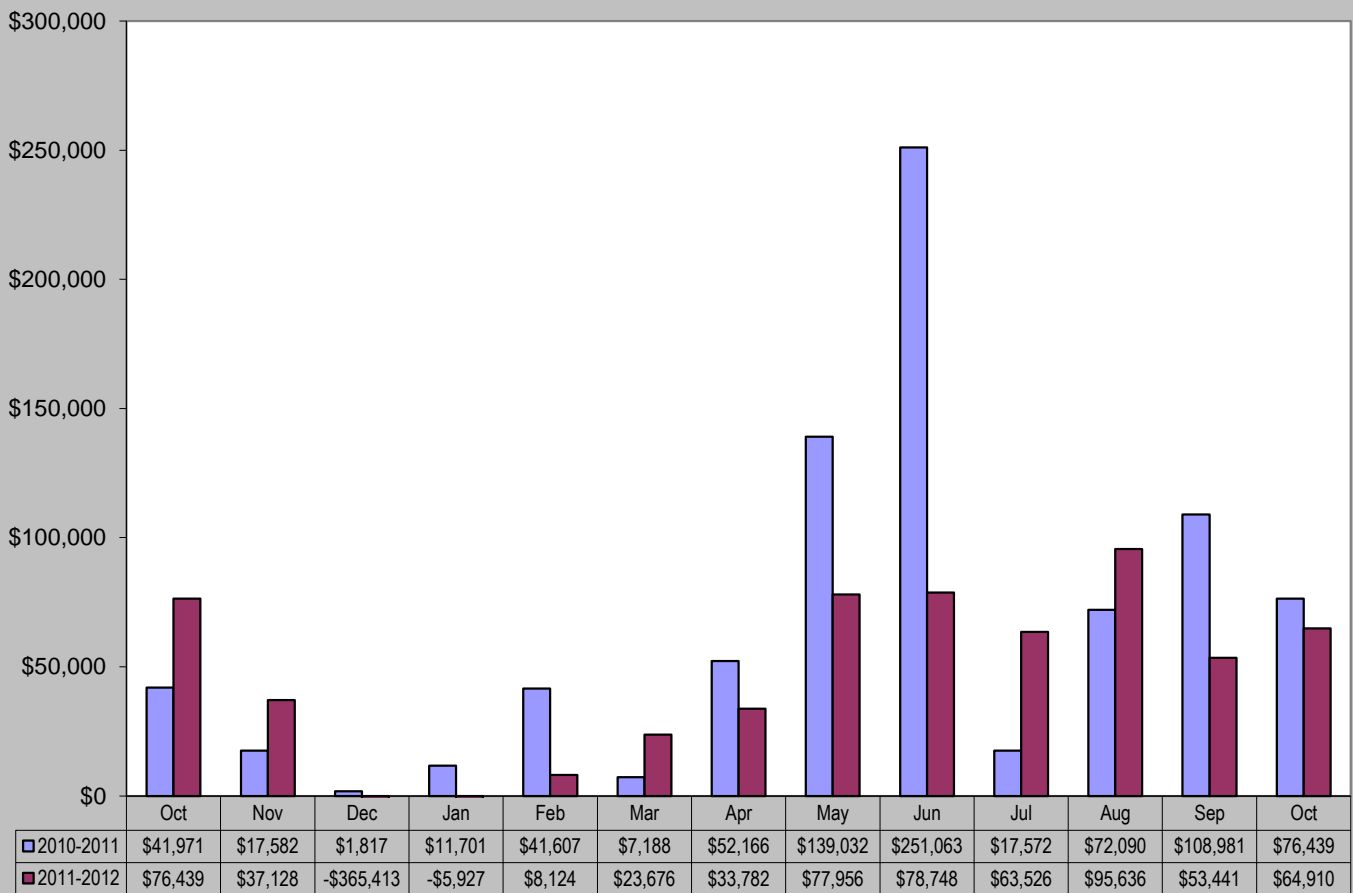
October 2012 Building Use Tax collections decreased 15.08% from October 2011.

Year-to-date building use tax collections decreased 36.51%.

October 2012	October 2011	% increase/decrease
<b>Building Use Tax</b>	<b>Building Use Tax</b>	
\$64,910	\$76,439	-15.08%

Building Use Tax	Building Use Tax	% increase/decrease
<b>2012 YTD</b>	<b>2011 YTD</b>	
\$493,871	\$777,839	-36.51%

## Building Use Tax - 2010/2011 vs. 2011/2012



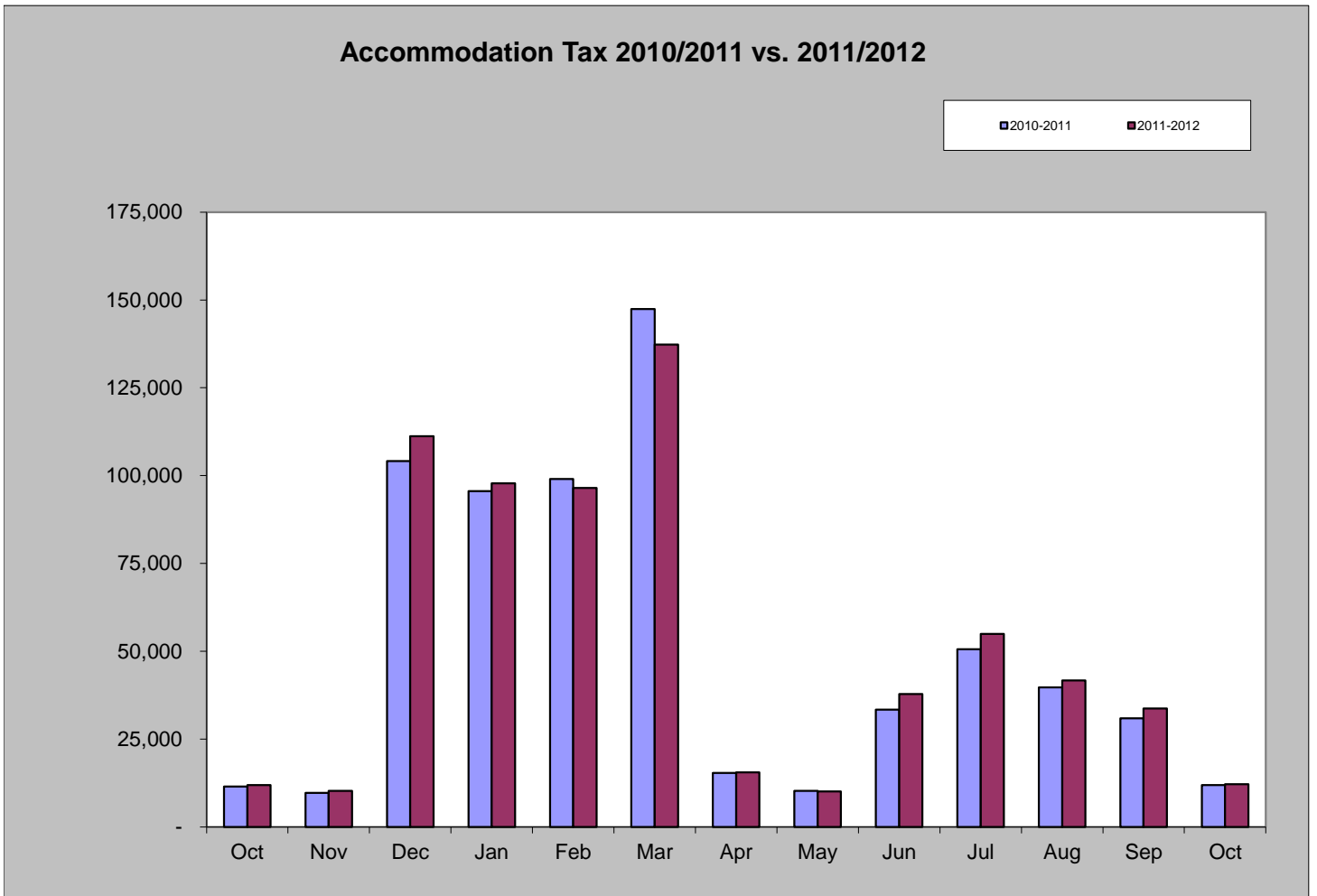
# Accommodation Tax

October 2012 accommodation tax increased 1.87% from October 2011.

Year-to-date accommodation tax increased 0.63%.

October 2012	October 2011	% increase/decrease
Accommodation Tax	Accommodation Tax	
\$12,143	\$11,920	1.87%

Accommodation Tax	Accommodation Tax	% increase/decrease
2012 YTD	2011 YTD	
\$537,504	\$534,114	0.63%

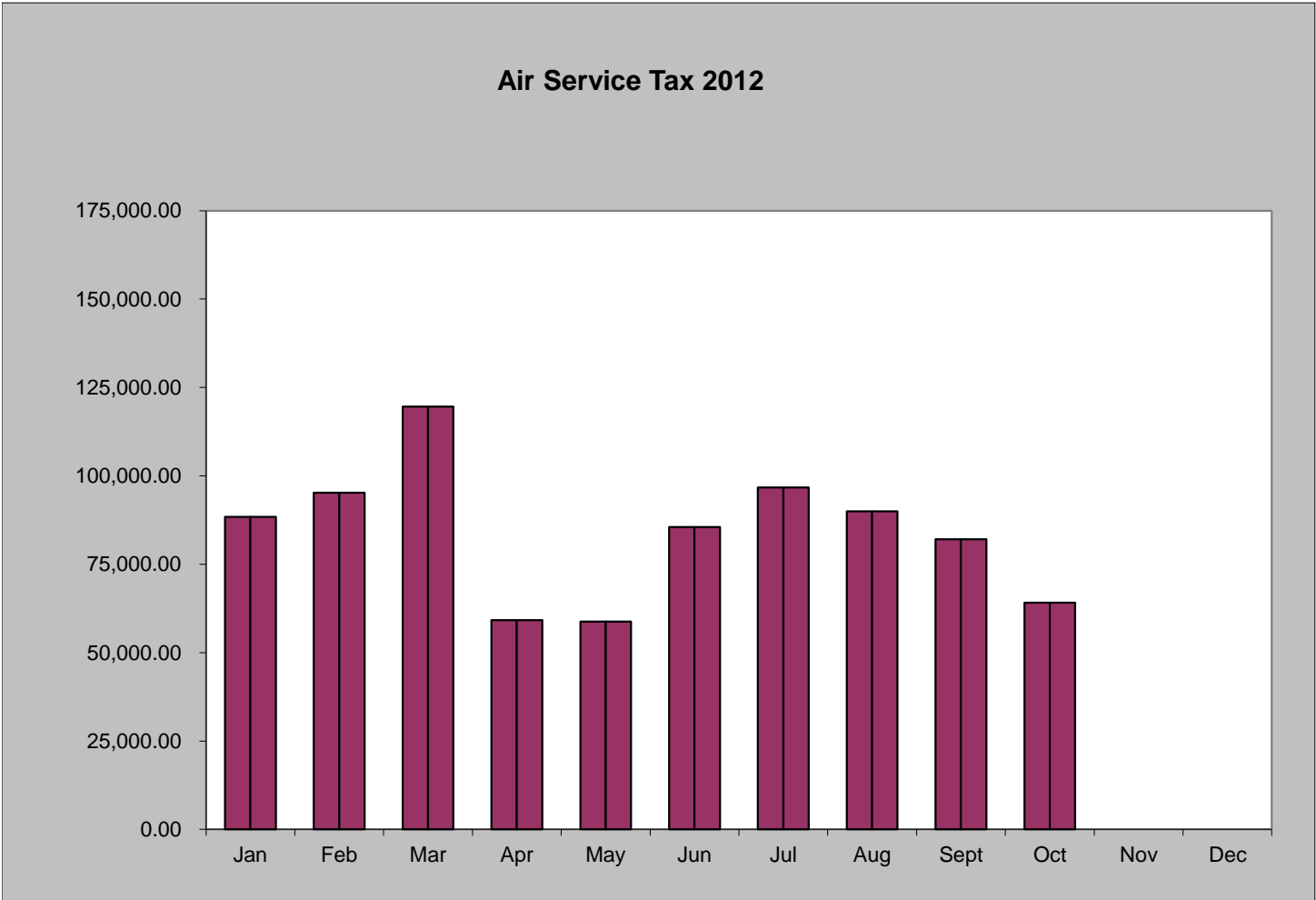


# Local Marketing District - Air Service Sales Tax

October 2012 air service sales tax was \$64,091.

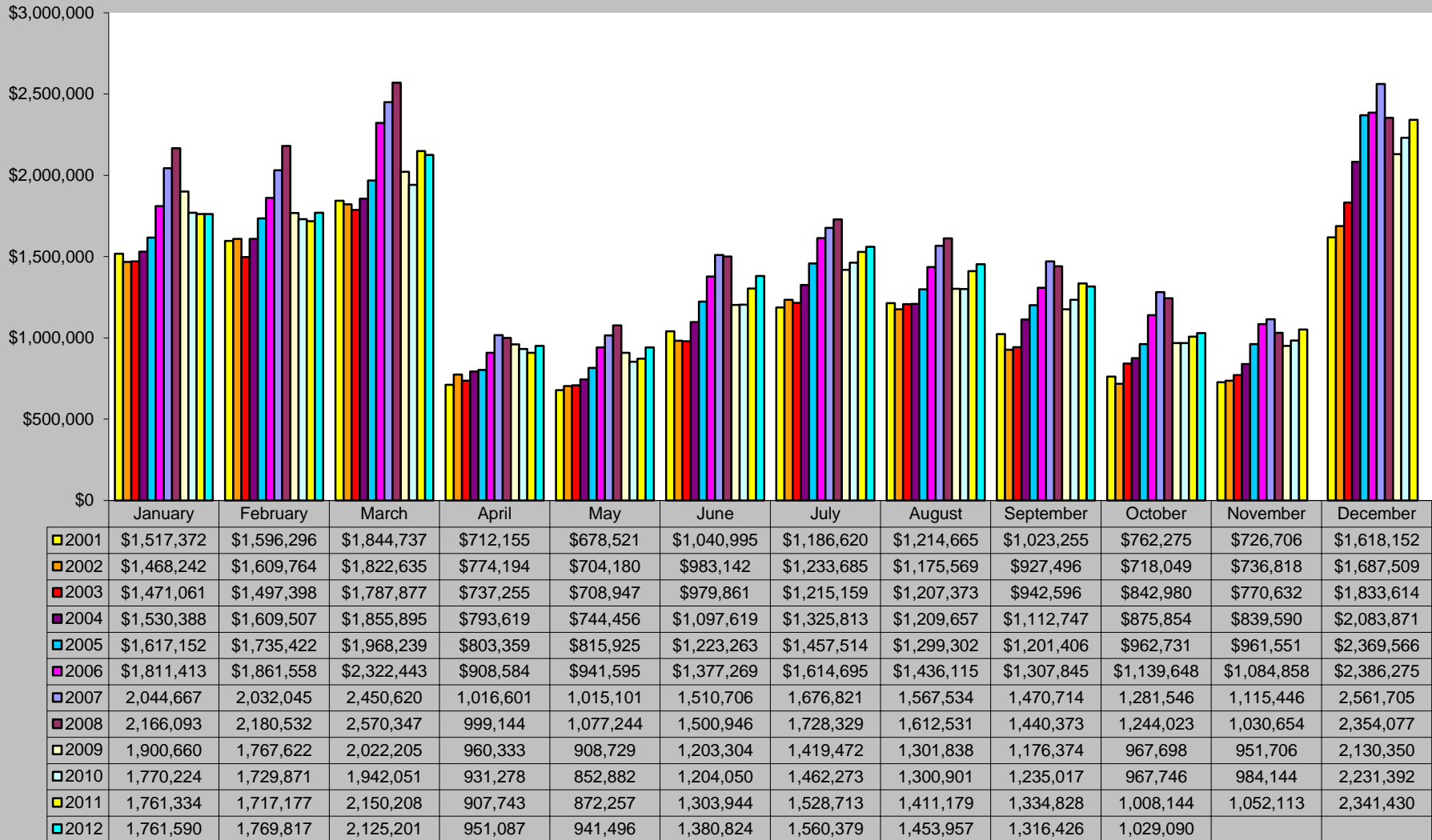
Year-to-date air service sales tax is \$839,548.

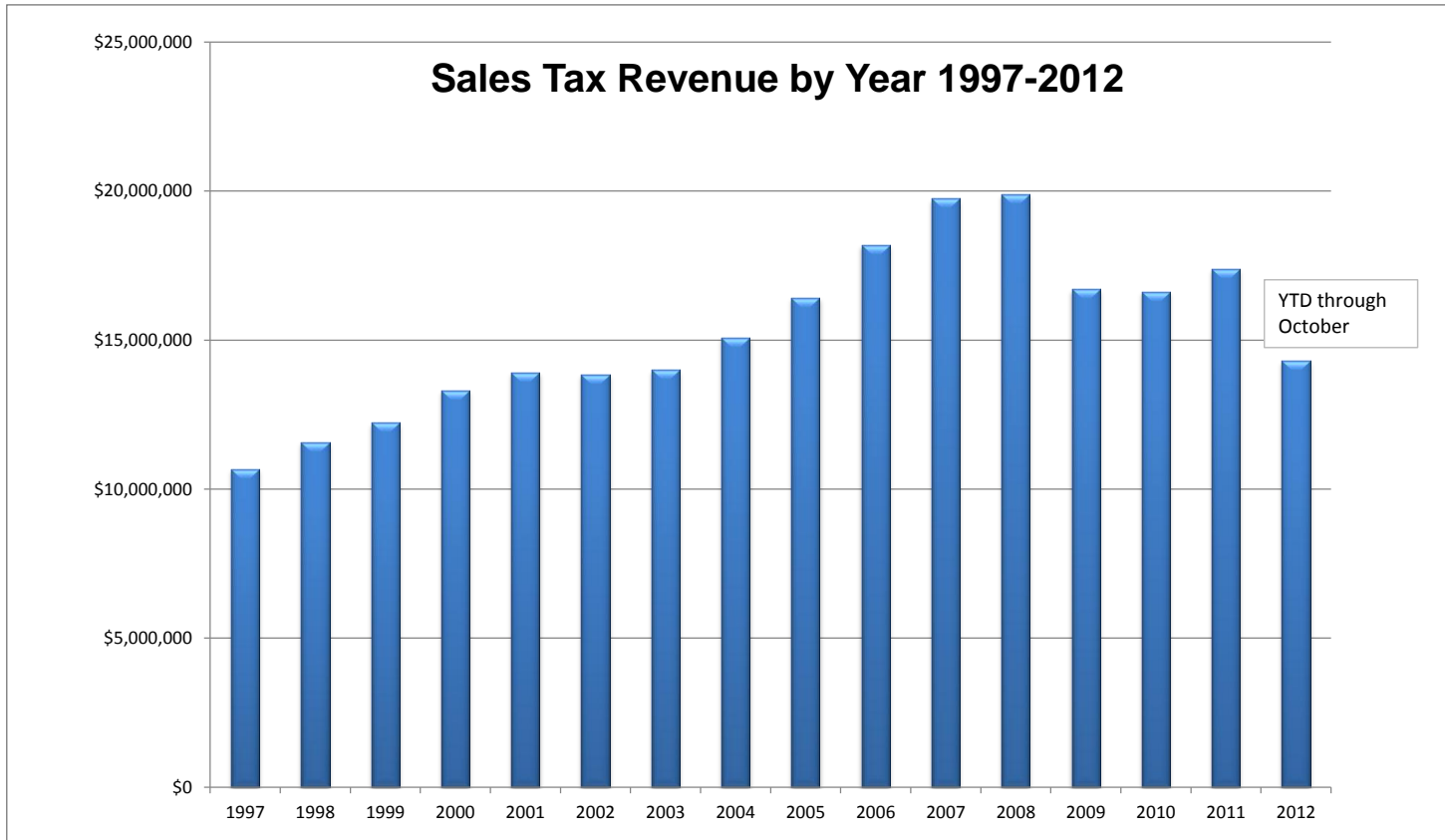
October 2012	Year to Date 2012
Air Service Sales Tax	Air Service Sales Tax
\$64,091	\$839,548





## Historical Sales Tax Data Sales Tax Totals - 2001 to 2012





Totals by Year	
<b>1997</b>	\$ 10,672,320
<b>1998</b>	\$ 11,559,068
<b>1999</b>	\$ 12,218,807
<b>2000</b>	\$ 13,304,983
<b>2001</b>	\$ 13,921,749
<b>2002</b>	\$ 13,841,283
<b>2003</b>	\$ 13,994,753
<b>2004</b>	\$ 15,079,016
<b>2005</b>	\$ 16,415,430
<b>2006</b>	\$ 18,192,298
<b>2007</b>	\$ 19,743,507
<b>2008</b>	\$ 19,904,293
<b>2009</b>	\$ 16,710,291
<b>2010</b>	\$ 16,611,829
<b>2011</b>	\$ 17,389,071
<b>*2012</b>	\$ 14,289,867

\*2012 totals are year-to-date through October